

North Yorkshire County Council
Customer Service Centre
County Hall
Northallerton
North Yorkshire
DL7 8AD
Tel: 01609 780780

Web: www.northyorks.gov.uk

Contact: Area 6 Highways Office

Date: 19 October 2022

Dear Resident/Occupier,

OTLEY ROAD AND BEECH GROVE, HARROGATE – ACTIVE TRAVEL IMPROVEMENT SCHEMES

North Yorkshire County Council are currently in the process of reviewing a series of proposed Active Travel Schemes across Harrogate in order to ensure the overarching strategic vision for sustainable travel infrastructure in the Town links together holistically to encourage the take up of walking and cycling. An interactive map showing all the current and proposed schemes across Harrogate is available for viewing on our website using the following link <https://www.northyorks.gov.uk/roads-parking-and-travel/major-transport-schemes-and-plans/harrogate-active-travel-projects>

As you may already be aware, North Yorkshire County Council have recently delivered the first phase of the National Productivity Investment Fund (NPIF) on Otley Road to create the first phase of a new cycleway, alongside a number of signalised junction improvements across the route to improve safety and address congestions along this key route corridor. The next phase of this scheme is on Otley Road between the junctions of Cold Bath Road/Arthurs Avenue and Beech Grove.

A consultation event took place on the design for these proposals in May 2022. Following from the delivery of Phase 1, Officers have taken the opportunity to reflect on the feedback received from that event, throughout construction and subsequent use to review the designs already prepared for this next phase. This was to ensure the links for this scheme are thoroughly considered as part of the wider strategic vision for Harrogate. This led to the identification of a short section of shared footway and cycleway between Victoria Road and Beech Grove, which could be too narrow to encourage use of the cycleway.

In addition to this, the lapsing of the Experimental Traffic Regulation Order on Beech Grove for the modal filter in August 2022 has led to a review of how proposals here link to the wider strategic vision across Harrogate for sustainable transport infrastructure and link to the next phase of the Otley Road Cycleway.

We are therefore writing to you as you are in the area affected by the next phase of the scheme to seek your views on the options we have for the cycleway alongside the linked proposals for Beech Grove. Please note that either option for Beech Grove can work with each option for NPIF phase 2.

Enclosed are the following options for you to consider for both NPIF and the development of Beech Grove:

NPIF Options

1. The existing proposal on Otley Road for phase 2
2. An alternative route for phase 2 using Victoria Road
3. An alternative route for phase 3 using Queens Road

Beech Grove Options

4. Modal filters on Beech Grove with one-way on Victoria Road
5. One-way arrangements on Beech Grove and Victoria Road

We would like to hear your comments on which option for both NPIF and Beech Grove would encourage you to take up more walking and cycling in the area.

Please send your comments through to Area6.Boroughbridge@northyorks.gov.uk using 'NPIF Phase 2 Consultation' in the title of your email or letter. Postal comments are to be sent to :

NYCC
Highways & Transportation
Area 6 Boroughbridge Office
Stump Cross
Boroughbridge
YO51 9HU

This consultation will run from 24th October 2022 – 28th November 2022.

There will also be 'Meet the Designer' events on Friday 11th November 4.30pm- 7.30pm at Harrogate Civic Centre should you wish to attend and ask any questions or share your thoughts on the proposals.

Please note that there is also a consultation taking place at the same time, related to the Active Travel Fund for Oatland Drive / The Saints are of Harrogate. This is separate to this engagement, as it is a wider consultation of potential active travel options for the area. If you wish to participate in this, you can do so by visiting the website link <https://oatlands.commonplace.is/> or find us via the NYCC website

Yours faithfully

Customer Service Centre

Otley Road and Beech Grove - Active Travel Improvement Scheme Feedback Form

Please tick your preferred NPIF option

NPIF Options

Option 1	The existing proposal on Otley Road for Phase 2	<input type="checkbox"/>	<input type="checkbox"/>
Option 2	An alternative route for Phase 2 using Victoria Road	<input type="checkbox"/>	<input type="checkbox"/>
Option 3	An alternative route for Phase 3 using Queen's Road	<input type="checkbox"/>	<input type="checkbox"/>

Please tick your preferred Beech Grove option

Beech Grove Options

Option 4	Modal Filters on Beech Grove with one-way on Victoria Road	<input type="checkbox"/>
Option 5	One-way arrangements on Beech Grove and Victoria Road	<input type="checkbox"/>

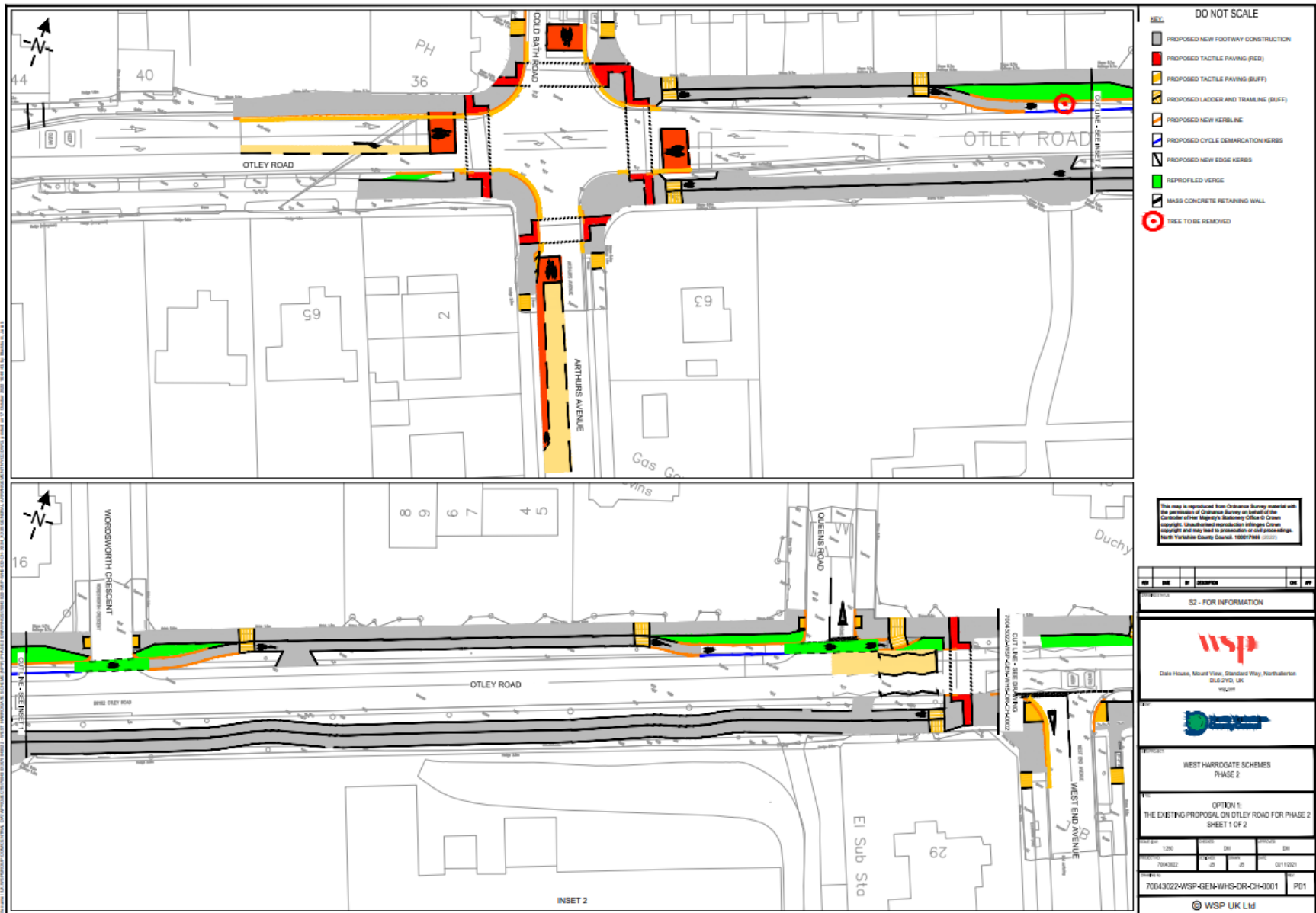
Comments

--

--

Name:

Contact Details:





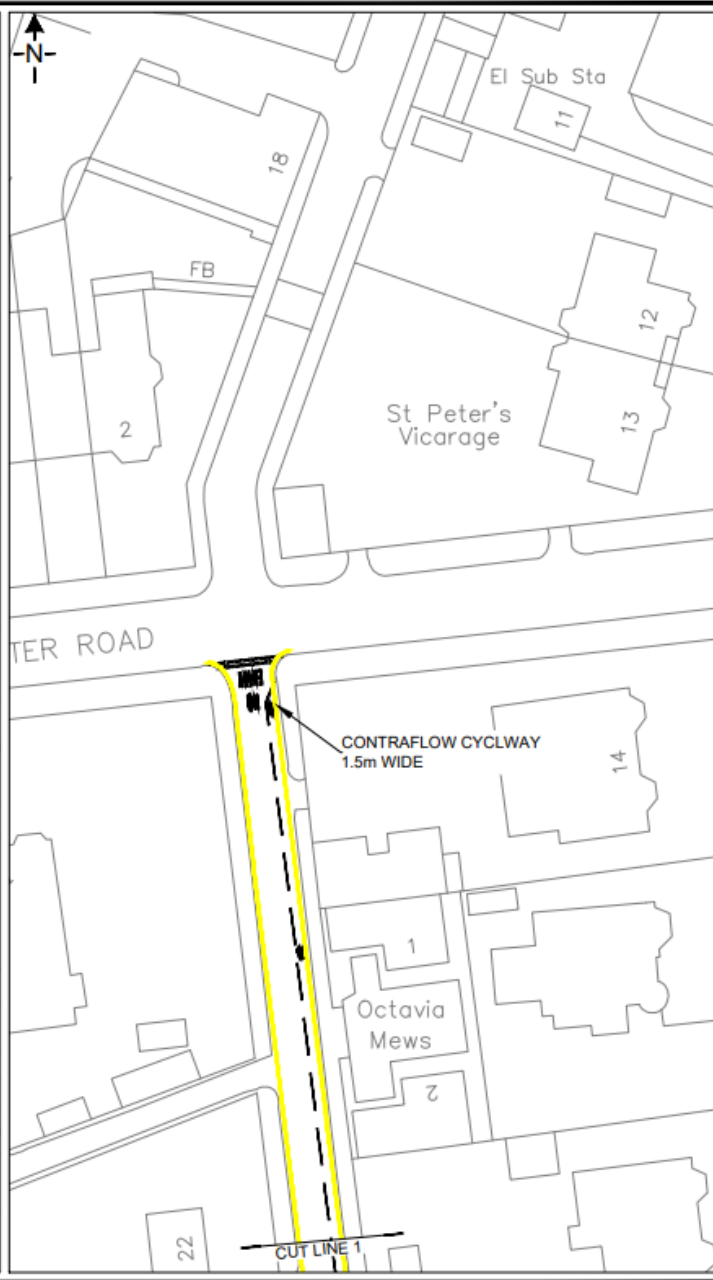
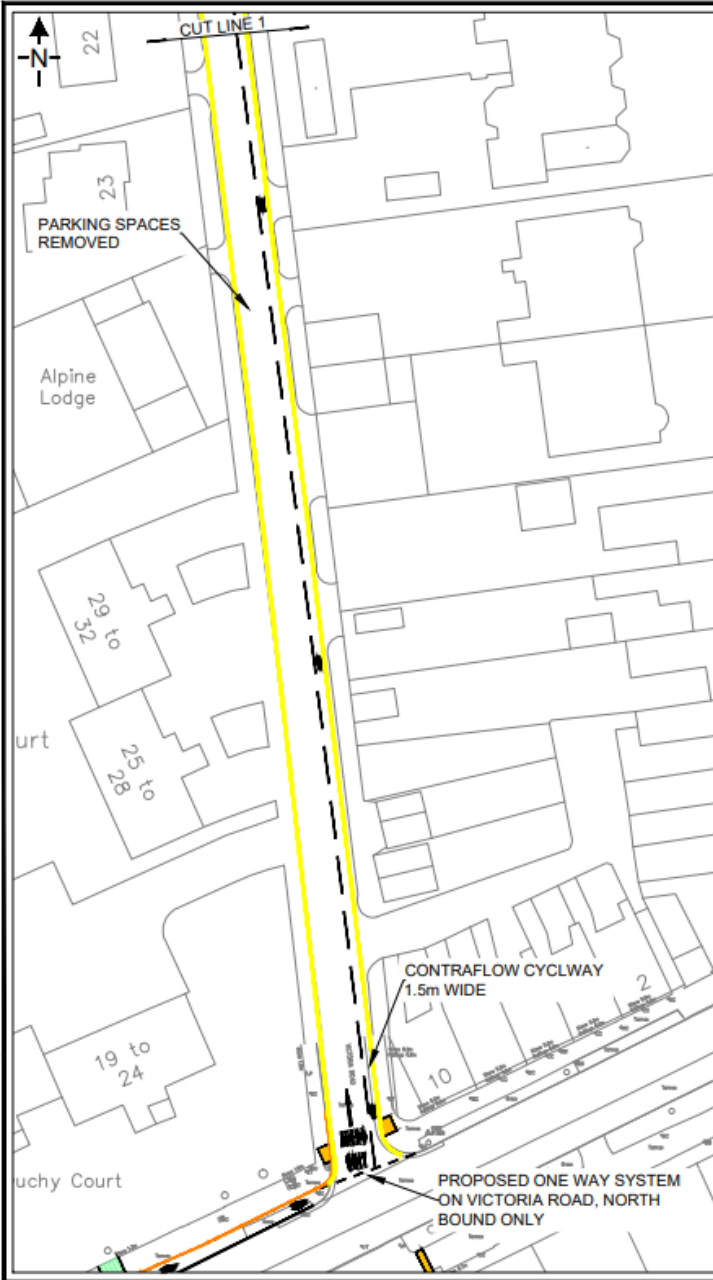
- KEY:**
- PROPOSED NEW FOOTWAY CONSTRUCTION
 - PROPOSED TACTILE PAVING (RED)
 - PROPOSED TACTILE PAVING (BUFF)
 - PROPOSED LADDER AND TRAILING (BUFF)
 - PROPOSED NEW KERBLINE
 - PROPOSED CYCLE DEMARCATION KERBS
 - PROPOSED NEW EDGE KERBS
 - REPROFILED VERGE
 - MASS CONCRETE RETAINING WALL

DO NOT SCALE

This map is reproduced from Ordnance Survey material with the permission of Ordnance Survey on behalf of the Controller of Her Majesty's Stationery Office © Crown copyright. Unauthorised reproduction infringes Crown copyright and may lead to prosecution or civil proceedings. North Yorkshire County Council. 100017946 (02/22)

REV	BY	DATE	DESCRIPTION	DN	APP
S2 - FOR INFORMATION					
<p style="font-size: small;">Dale House, Mount View, Standard Way, Northolt, Middlesex, UK www.wsp.com</p>					
WEST HARROGATE SCHEMES PHASE 2					
OPTION 1: THE EXISTING PROPOSAL ON OTLEY ROAD FOR PHASE 2 SHEET 2 OF 2					
SCALE	1:250	DATE	08/11/2021	DRAWN	DN
PROJECT NO.	70043022	REVISED	01	DATE	02/11/2021
DRAWING NO.	70043022-WSP-GEN-WHS-DR-CH-0002				REV
					P01
© WSP UK Ltd					

File name \\UK\WSP\GROUP\PROJECTS\CENTRAL DATA\PROJECTS\70097966 - NYH - WEST HARROGATE NP\IF SCHEME PHASE 2\03 WPH\W HIGHWAY\502 DRAWING\VICTORIA ROAD DRAFT 02.DWG, printed on 17/10/2022 10:20:41, by Blackburn, Jacob



DO NOT SCALE

P01	17/10/2022	JM	FIRST ISSUE		JB	DM
REV	DATE	BY	DESCRIPTION		CHK	APP

DRAWING STATUS: S2 - FOR INFORMATION

Dale House, Mount View, Standard Way, Northallerton
DL6 2YD, UK
wsp.com

North Yorkshire
County Council

PROJECT: WEST HARROGATE NP/IF PHASE 2

TITLE: OPTION 2:
AN ALTERNATIVE ROUTE FOR PHASE 2
USING VICTORIA ROAD

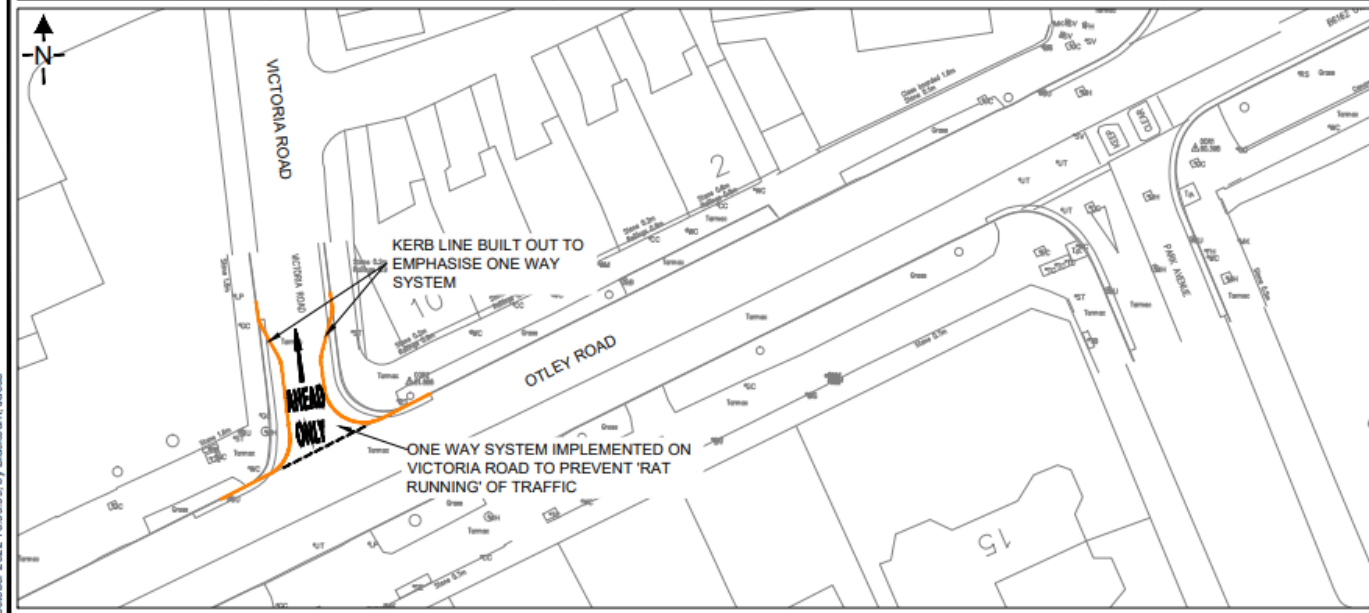
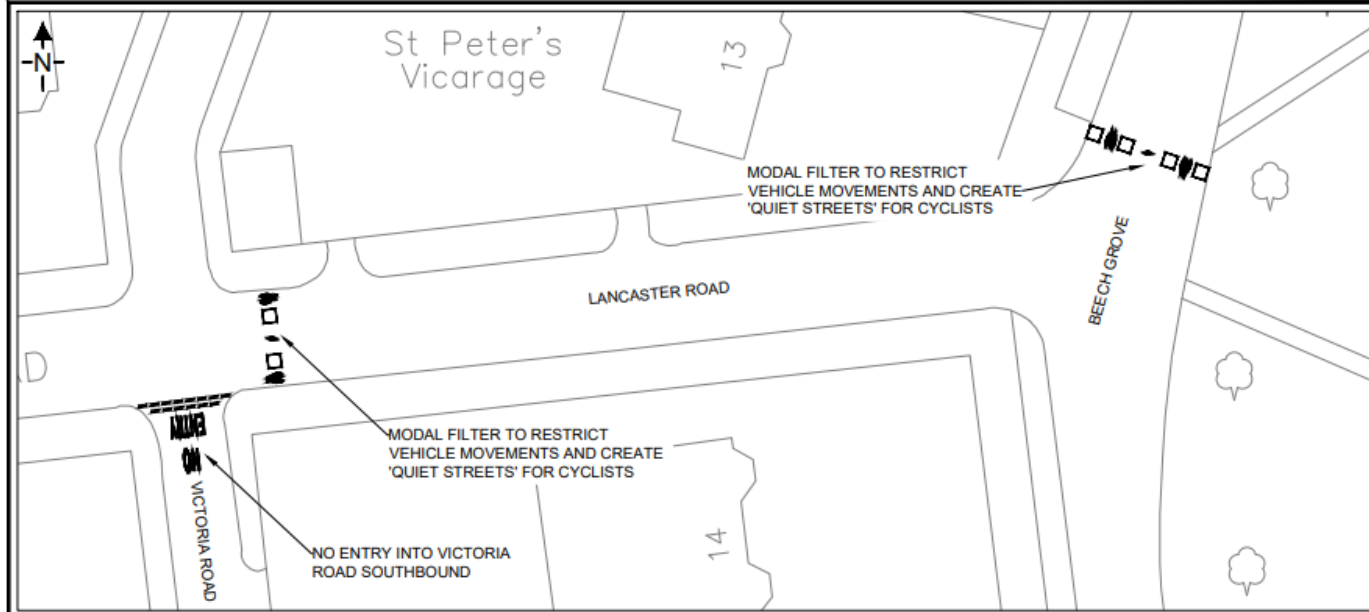
SCALE @ A3:	NTS	DRAWN:	JB	APPROVED:	DM
PROJECT NO:	70097966	DESIGNED:	JM	DATE:	October 22

DRAWING NO: 70097966-WSP-GEN-XXX-DR-CH-0002

REV: P01

© WSP UK Ltd

File name \\UK.WSPGROUP\CENTRAL\DATA\PROJECTS\70097XXX\70097966 - NYH - WEST HARROGATE NPIF SCHEME PHASE 2.03 WIP\HW HIGHWAYS\02 DRAWING\MODAL FILTER.DWG, printed on 17 October 2022 16:35:39, by Blackburn, Jacob



DO NOT SCALE

PO1	07/10/2022	JM	FIRST ISSUE		JB	DM
REV	DATE	BY	DESCRIPTION		CHK	APP

DRAWING STATUS: S2 - FOR INFORMATION



Dale House, Mount View, Standard Way, Northallerton
DL6 2YD, UK
wsp.com



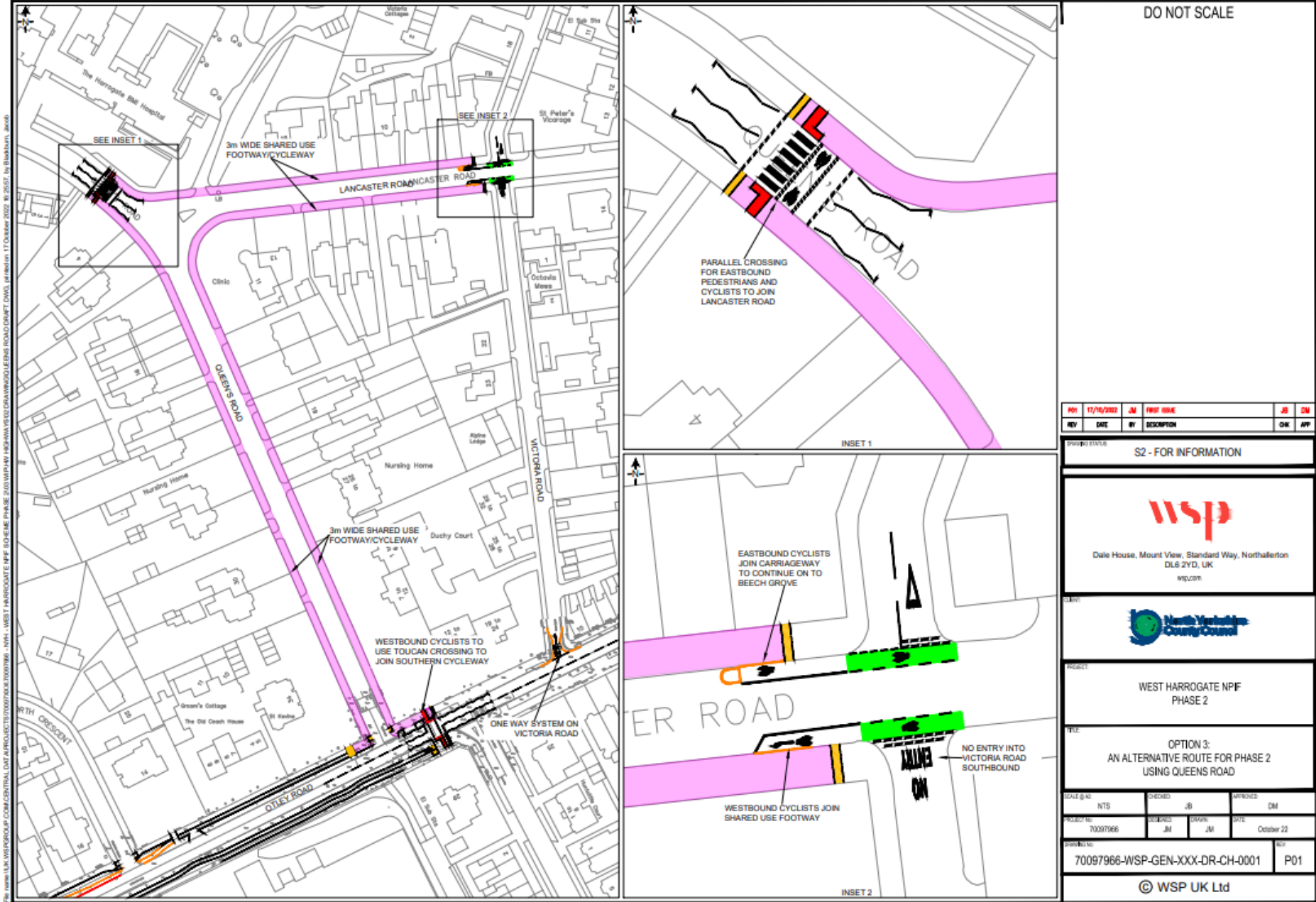
PROJECT: WEST HARROGATE NPIF
PHASE 2

TITLE: OPTION 4:
MODAL FILTERS ON BEECH GROVE WITH
ONE-WAY ON VICTORIA ROAD

SCALE @ A2:	NTS	CHECKED:	JB	APPROVED:	DM
PROJECT NO:	70097966	DESIGNED:	JM	DRAWN:	JM
				DATE:	October 22

DRAWING NO:	70097966-WSP-GEN-XXX-DR-CH-0003	REV:	P01
-------------	---------------------------------	------	-----

© WSP UK Ltd



File name: \\UK-WSP\GROUP\COM\CENTRAL\DATA\PROJECTS\70007966-XXX-1\WEST HARROGATE NPF - S2-GEN-CH-001\DRAWINGS\GEN-ROAD\DRGT-DWG.dwg, created on: 11 October 2022 16:26:07, by: blackburn, jacob

DO NOT SCALE

REV	DATE	BY	DESCRIPTION	CHK	APP
01	17/10/2022	JM	FIRST ISSUE	JL	DM

PROJECT STATUS: S2 - FOR INFORMATION

Dale House, Mount View, Standard Way, Northallerton
DL5 2YD, UK
wsp.com

PROJECT: WEST HARROGATE NPF PHASE 2

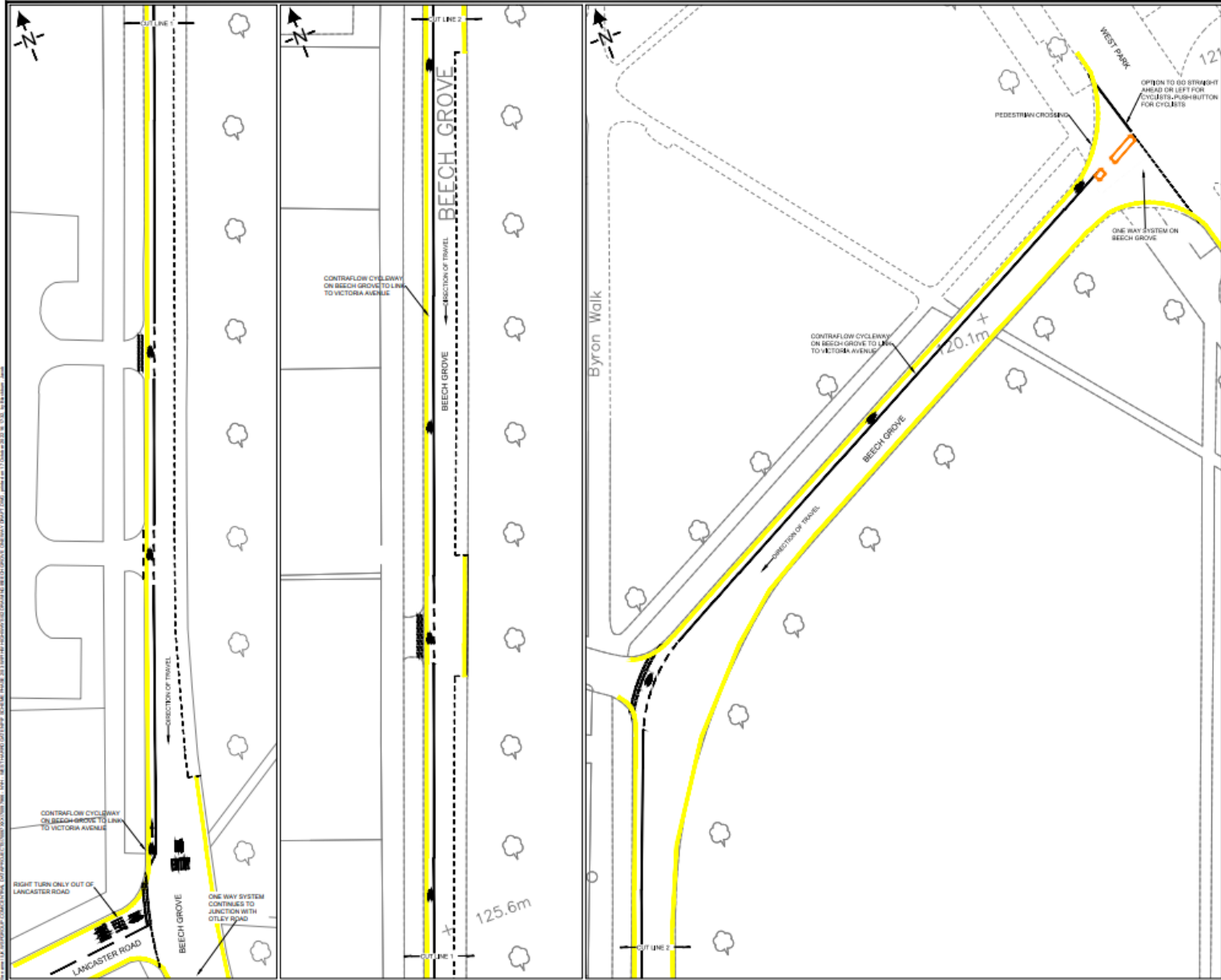
TITLE: OPTION 3: AN ALTERNATIVE ROUTE FOR PHASE 2 USING QUEENS ROAD

SCALE @ A2	DRAWN	CHECKED	DESIGNED	APPROVED
NTS	JM	JM	JM	DM

PROJECT NO: 70007966 | DATE: October 22

PROJECT ID: 70007966-WSP-GEN-XXX-DR-CH-0001 | P01

© WSP UK Ltd



DO NOT SCALE

- NOTES**
1. PROPOSED ONE WAY SYSTEM ON BEECH GROVE. VEHICLES WILL BE ABLE TO TRAVEL SOUTHBOUND ONLY BETWEEN WEST PARK AND OTLEY ROAD. CYCLISTS WILL BE ABLE TO TRAVEL NORTHBOUND ON BEECH GROVE USING THE PROPOSED CONTRAFLOW CYCLE LANE BETWEEN LANCASTER ROAD AND THE WEST PARK JUNCTION. THIS THEN LINKS UP TO THE FUTURE PROPOSALS ON VICTORIA AVENUE. SOUTHBOUND CYCLISTS WILL BE ON THE CARRIAGEWAY ON BEECH GROVE WITH REDUCED TRAFFIC FLOWS DUE TO THE ONE WAY SYSTEM.
 2. PARKING BAYS TO REMAIN AS EXISTING.
 3. THIS PROPOSAL WOULD BE IMPLEMENTED ALONGSIDE THE VICTORIA ROAD ONE WAY PROPOSAL.

PH	17/07/22	AM	PROJ ISSUE	JA	AM
REV	001	BY	WSP/AM	CHK	AM

PROJECT TITLE: S2 - FOR INFORMATION



PROJECT: WEST HARROGATE NPF
PHASE 2

OPTION 5:
ONE WAY ARRANGEMENT ON
BEECH GROVE

REVISED BY	WSP	DATE	08	DESCRIPTION	DM
70097966	AM	08	08	October 22	

70097966-WSP-GEN-XXX-DR-CH-004 P01

© WSP UK Ltd