

**Key**

**Landform Elements**

- Glacial Till
- ▨ High Plateaux
- ⊠ Mine Shaft
- ⊙ Shake Hole
- Subsidence Hollow
- Downward Ground Slope (\*\*)
- W Historic River Channel
- ▲ Scarp
- ⋈ Steepsided Valleys
- ▭ Terrace
- ▲ Alluvium
- ▭ Dry Valley
- Earth Mound (manmade)
- ▨ Esker
- ▨ Hummocky Surface
- ▭ Moraine
- ▨ Ridge
- ▨ Sandstone (subsurface)
- ▨ Slate Band
- Field Note
- ▭ Sample Area
- ▭ 500m Buffer

**Resource Potential**

ASMRP 1: Sand and Gravel Sub-alluvial	ASMRP 8: Limestone Jurassic
ASMRP 2: Sand and Gravel Rivel Terrace	ASMRP 9: Limestone Permian
ASMRP 3: Sand and Gravel Glaciofluvial	ASMRP 10: Coal (shallow)
ASMRP 4: Sand and Gravel Glacial	ASMRP 11: Brick Clay Carboniferous
ASMRP 5: Sand and Gravel Undifferentiated	ASMRP 12: Sandstone Carboniferous
ASMRP 6: Brick Clay Quaternary	ASMRP 13: Silica
ASMRP 7: Chalk	ASMRP 14: Limestone

**Notes**

\* Asterisk on field notes indicate accompanying site photographs

\*\* Length of downward slope arrows indicative of gradient. (short = steep, long = shallow)

N  
Scale 1:6,000

Client

(C) Crown Copyright and database right 2011. Ordnance Survey 100017946 North Yorkshire County Council

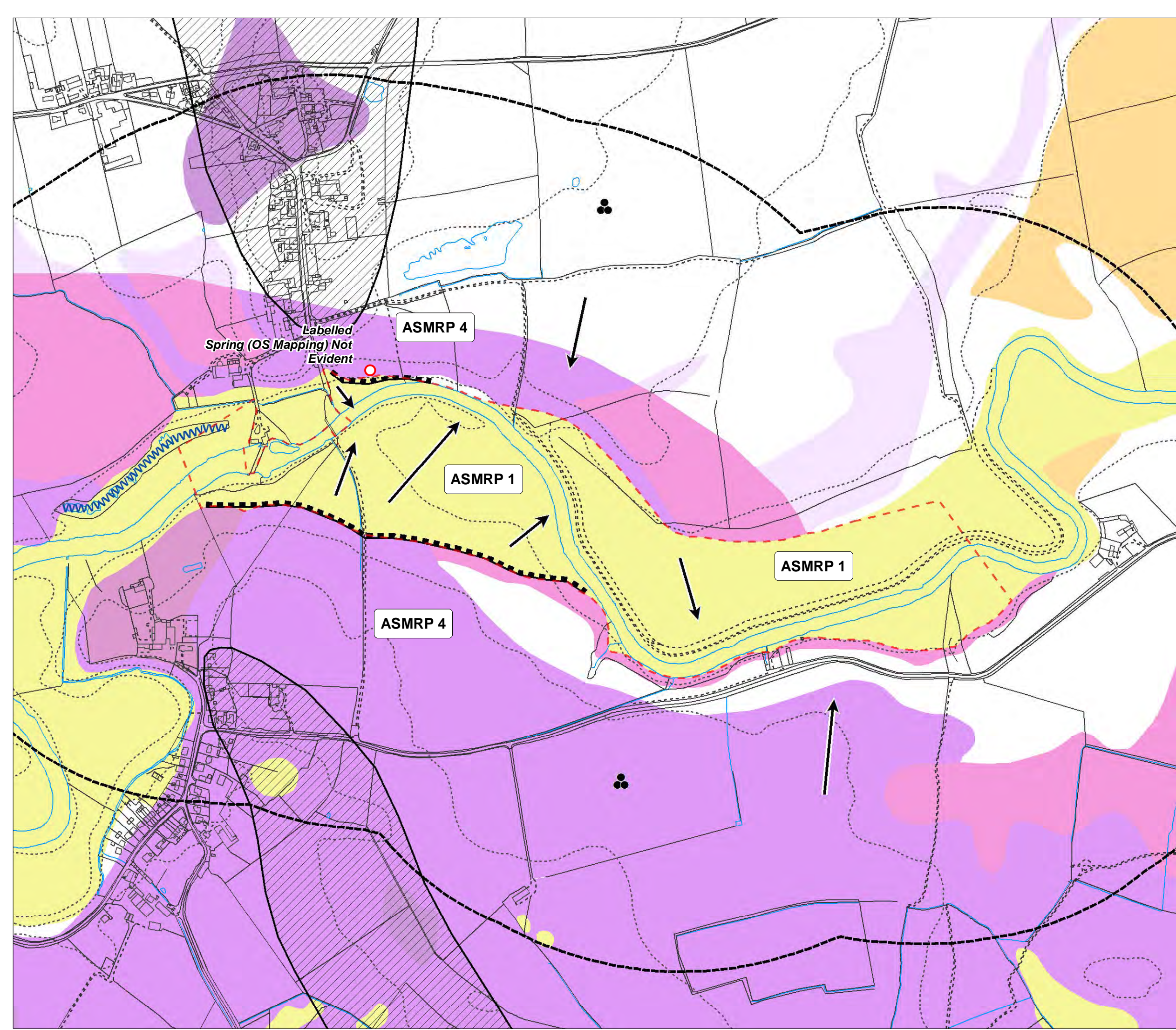
**NYCC/BES/18376**  
**Managing Landscape Change**

**ASMRP 1.1**  
**LANDFORM ELEMENT CLASSIFICATION**

Drawn By	KJ
Checked By	SG
Approved By	JG
Drawing No	CS_049966_01_056_Rev1
Date	20 September 2011

**CAPITA SYMONDS**

The Capita Building  
Kingmoor Business Park  
Carlisle  
CA6 4SJ



**Key**

**Landform Elements**

- Glacial Till
- ▲ Alluvium
- ||| High Plateaux
- Dry Valley
- ⊠ Mine Shaft
- Earth Mound (manmade)
- Shake Hole
- ▨ Esker
- Subsidence Hollow
- ▩ Hummocky Surface
- ➔ Downward Ground Slope (\*\*)
- ▬ Moraine
- W Historic River Channel
- ▨ Ridge
- ▲ Scarp
- ▨ Sandstone (subsurface)
- S Steepsided Valleys
- ▨ Slate Band
- Terrace
- Field Note
- Sample Area
- 500m Buffer

**Resource Potential**

ASMRP 1: Sand and Gravel Sub-alluvial	ASMRP 8: Limestone Jurassic
ASMRP 2: Sand and Gravel River Terrace	ASMRP 9: Limestone Permian
ASMRP 3: Sand and Gravel Glaciofluvial	ASMRP 10: Coal (shallow)
ASMRP 4: Sand and Gravel Glacial	ASMRP 11: Brick Clay Carboniferous
ASMRP 5: Sand and Gravel Undifferentiated	ASMRP 12: Sandstone Carboniferous
ASMRP 6: Brick Clay Quaternary	ASMRP 13: Silica
ASMRP 7: Chalk	ASMRP 14: Limestone

**Notes**

\* Asterisk on field notes indicate accompanying site photographs

\*\* Length of downward slope arrows indicative of gradient. (short = steep, long = shallow)

N  
Scale 1:6,000

Client



(C) Crown Copyright and database right 2011. Ordnance Survey 100017946 North Yorkshire County Council

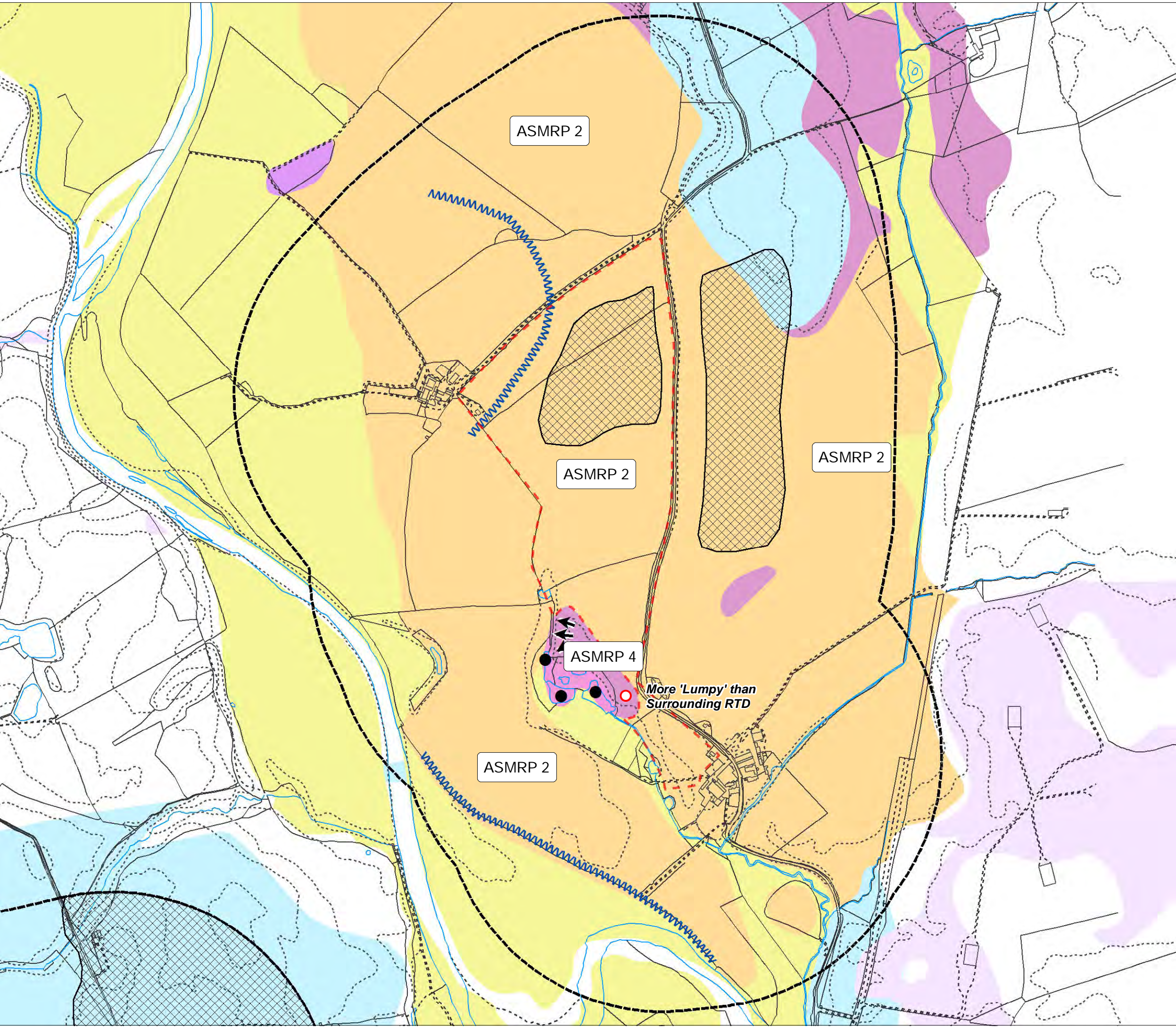
**NYCC/BES/18376**  
**Managing Landscape Change**

**ASMRP 1.2**  
**LANDFORM ELEMENT CLASSIFICATION**

Drawn By	KJ
Checked By	SG
Approved By	JG
Drawing No	CS_049966_01_057_Rev1
Date	20 September 2011

**CAPITA SYMONDS**

The Capita Building  
Kingmoor Business Park  
Carlisle  
CA6 4SJ



**Key**

**Landform Elements**

- Glacial Till
- ▲ Alluvium
- ≡ High Plateaux
- Dry Valley
- ⊠ Mine Shaft
- Earth Mound (manmade)
- Shake Hole
- ▨ Esker
- Subsidence Hollow
- ▩ Hummocky Surface
- ➔ Downward Ground Slope (\*\*)
- ▬ Moraine
- W Historic River Channel
- ▨ Ridge
- ▲ Scarp
- ▨ Sandstone (subsurface)
- S Steepsided Valleys
- ▨ Slate Band
- Terrace
- Field Note
- Sample Area
- 500m Buffer

**Resource Potential**

<b>ASMRP 1: Sand and Gravel</b> Sub-alluvial	<b>ASMRP 8: Limestone</b> Jurassic
<b>ASMRP 2: Sand and Gravel</b> River Terrace	<b>ASMRP 9: Limestone</b> Permian
<b>ASMRP 3: Sand and Gravel</b> Glaciofluvial	<b>ASMRP 10: Coal (shallow)</b>
<b>ASMRP 4: Sand and Gravel</b> Glacial	<b>ASMRP 11: Brick Clay</b> Carboniferous
<b>ASMRP 5: Sand and Gravel</b> Undifferentiated	<b>ASMRP 12: Sandstone</b> Carboniferous
<b>ASMRP 6: Brick Clay</b> Quaternary	<b>ASMRP 13: Silica</b>
<b>ASMRP 7: Chalk</b>	<b>ASMRP 14: Limestone</b>

**Notes**

\* Asterisk on field notes indicate accompanying site photographs

\*\* Length of downward slope arrows indicative of gradient. (short = steep, long = shallow)

N  
Scale 1:8,000

Client

(C) Crown Copyright and database right 2011. Ordnance Survey 100017946 North Yorkshire County Council

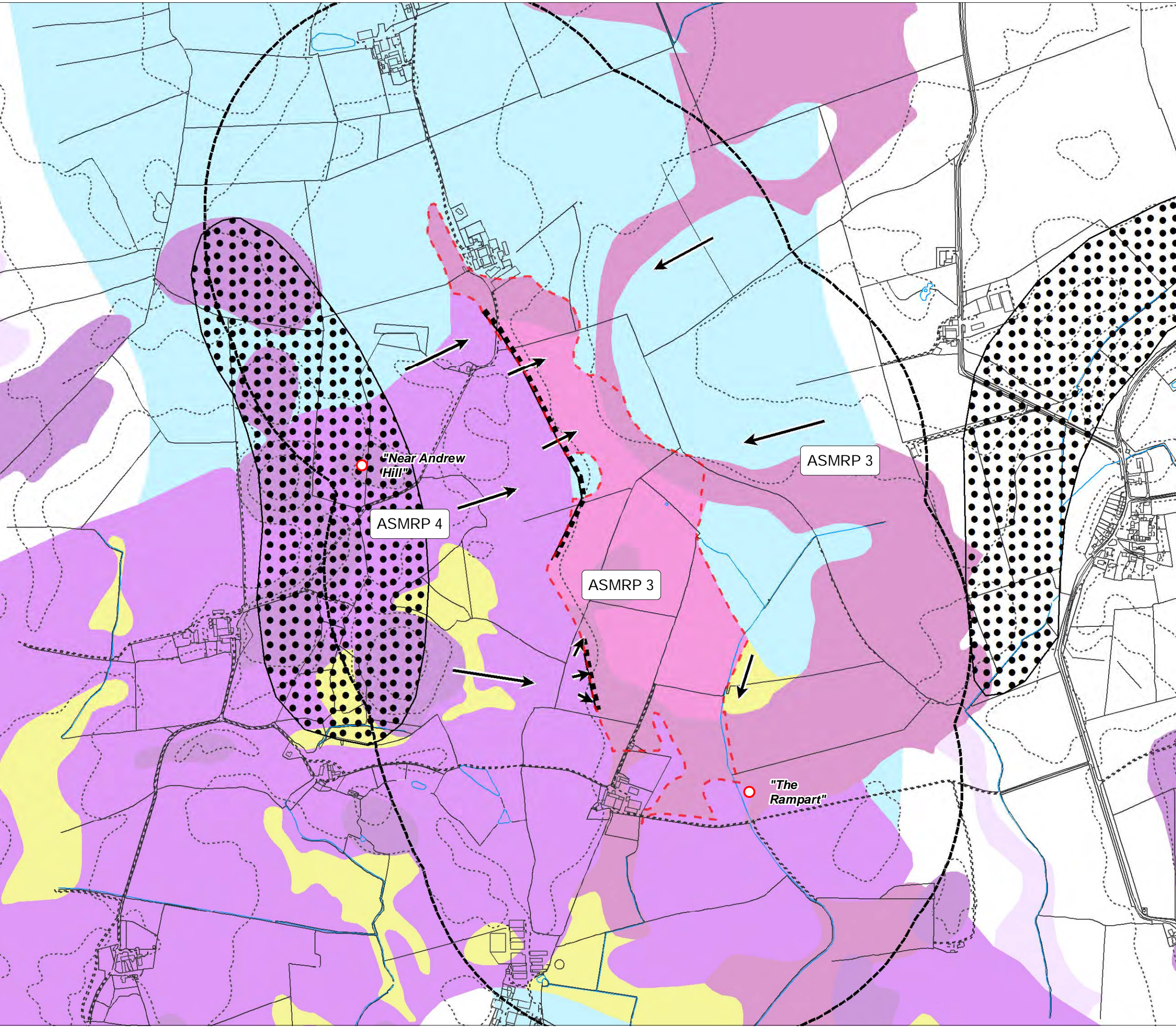
NYCC/BES/18376  
Managing Landscape Change

**ASMRP 2  
LANDFORM ELEMENT CLASSIFICATION**

Drawn By	KJ
Checked By	SG
Approved By	JG
Drawing No	CS_049966_01_058_Rev1
Date	20 September 2011

**CAPITA SYMONDS**

The Capita Building  
Kingmoor Business Park  
Carlisle  
CA6 4SJ



**Key**

**Landform Elements**

- Glacial Till
- ▲ Alluvium
- ≡ High Plateaux
- Dry Valley
- ⊠ Mine Shaft
- Earth Mound (manmade)
- Shake Hole
- ▨ Esker
- Subsidence Hollow
- ▩ Hummocky Surface
- ➔ Downward Ground Slope (\*\*)
- ▬ Moraine
- W Historic River Channel
- ▨ Ridge
- ▲ Scarp
- S Steepsided Valleys
- ▨ Sandstone (subsurface)
- T Terrace
- ▨ Slate Band
- Field Note
- Sample Area
- 500m Buffer

**Resource Potential**

ASMRP 1: Sand and Gravel Sub-alluvial	ASMRP 8: Limestone Jurassic
ASMRP 2: Sand and Gravel River Terrace	ASMRP 9: Limestone Permian
ASMRP 3: Sand and Gravel Glaciofluvial	ASMRP 10: Coal (shallow)
ASMRP 4: Sand and Gravel Glacial	ASMRP 11: Brick Clay Carboniferous
ASMRP 5: Sand and Gravel Undifferentiated	ASMRP 12: Sandstone Carboniferous
ASMRP 6: Brick Clay Quaternary	ASMRP 13: Silica
ASMRP 7: Chalk	ASMRP 14: Limestone

**Notes**

\* Asterisk on field notes indicate accompanying site photographs

\*\* Length of downward slope arrows indicative of gradient. (short = steep, long = shallow)

N  
Scale 1:8,000

Client



(C) Crown Copyright and database right 2011. Ordnance Survey 100017946 North Yorkshire County Council

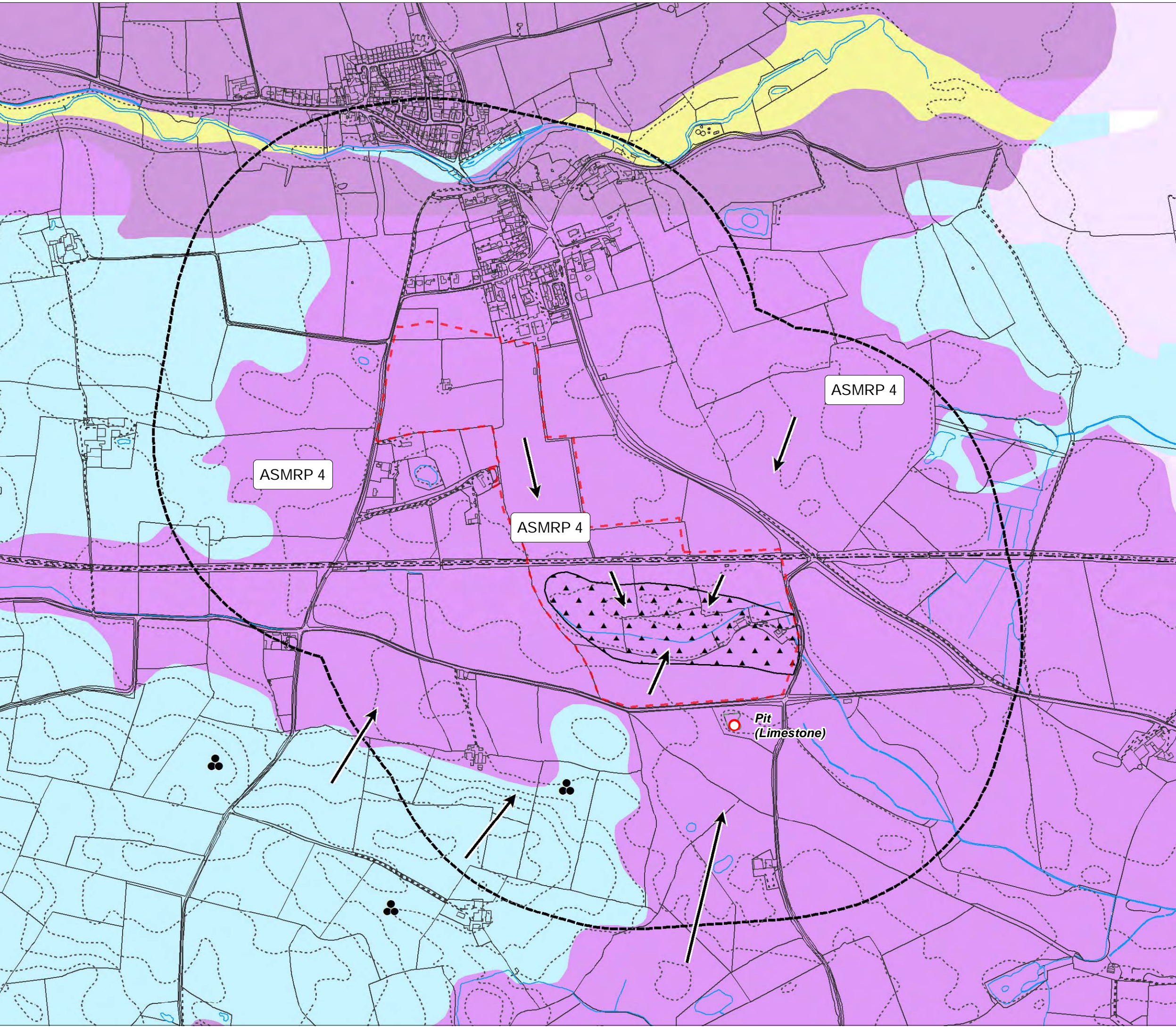
NYCC/BES/18376  
Managing Landscape Change

**ASMRP 3  
LANDFORM ELEMENT CLASSIFICATION**

Drawn By	KJ
Checked By	SG
Approved By	JG
Drawing No	CS_049966_01_059_Rev1
Date	20 September 2011

**CAPITA SYMONDS**

The Capita Building  
Kingmoor Business Park  
Carlisle  
CA6 4SJ



**Key**

**Landform Elements**

- Glacial Till
- ▲ Alluvium
- ≡ High Plateaux
- Dry Valley
- ⊠ Mine Shaft
- Earth Mound (manmade)
- Shake Hole
- ▨ Esker
- Subsidence Hollow
- ▩ Hummocky Surface
- ➔ Downward Ground Slope (\*\*)
- ▬ Moraine
- W Historic River Channel
- ▨ Ridge
- ▲ Scarp
- ▨ Sandstone (subsurface)
- S Steepsided Valleys
- ▨ Slate Band
- T Terrace
- Field Note
- Sample Area
- 500m Buffer

**Resource Potential**

ASMRP 1: Sand and Gravel <i>Sub-alluvial</i>	ASMRP 8: Limestone <i>Jurassic</i>
ASMRP 2: Sand and Gravel <i>River Terrace</i>	ASMRP 9: Limestone <i>Permian</i>
ASMRP 3: Sand and Gravel <i>Glaciofluvial</i>	ASMRP 10: Coal (shallow)
ASMRP 4: Sand and Gravel <i>Glacial</i>	ASMRP 11: Brick Clay <i>Carboniferous</i>
ASMRP 5: Sand and Gravel <i>Undifferentiated</i>	ASMRP 12: Sandstone <i>Carboniferous</i>
ASMRP 6: Brick Clay <i>Quaternary</i>	ASMRP 13: Silica <i>Carboniferous</i>
ASMRP 7: Chalk	ASMRP 14: Limestone

**Notes**

\* Asterisk on field notes indicate accompanying site photographs

\*\* Length of downward slope arrows indicative of gradient. (short = steep, long = shallow)

N  
Scale 1:8,000

Client



(C) Crown Copyright and database right 2011. Ordnance Survey 100017946 North Yorkshire County Council

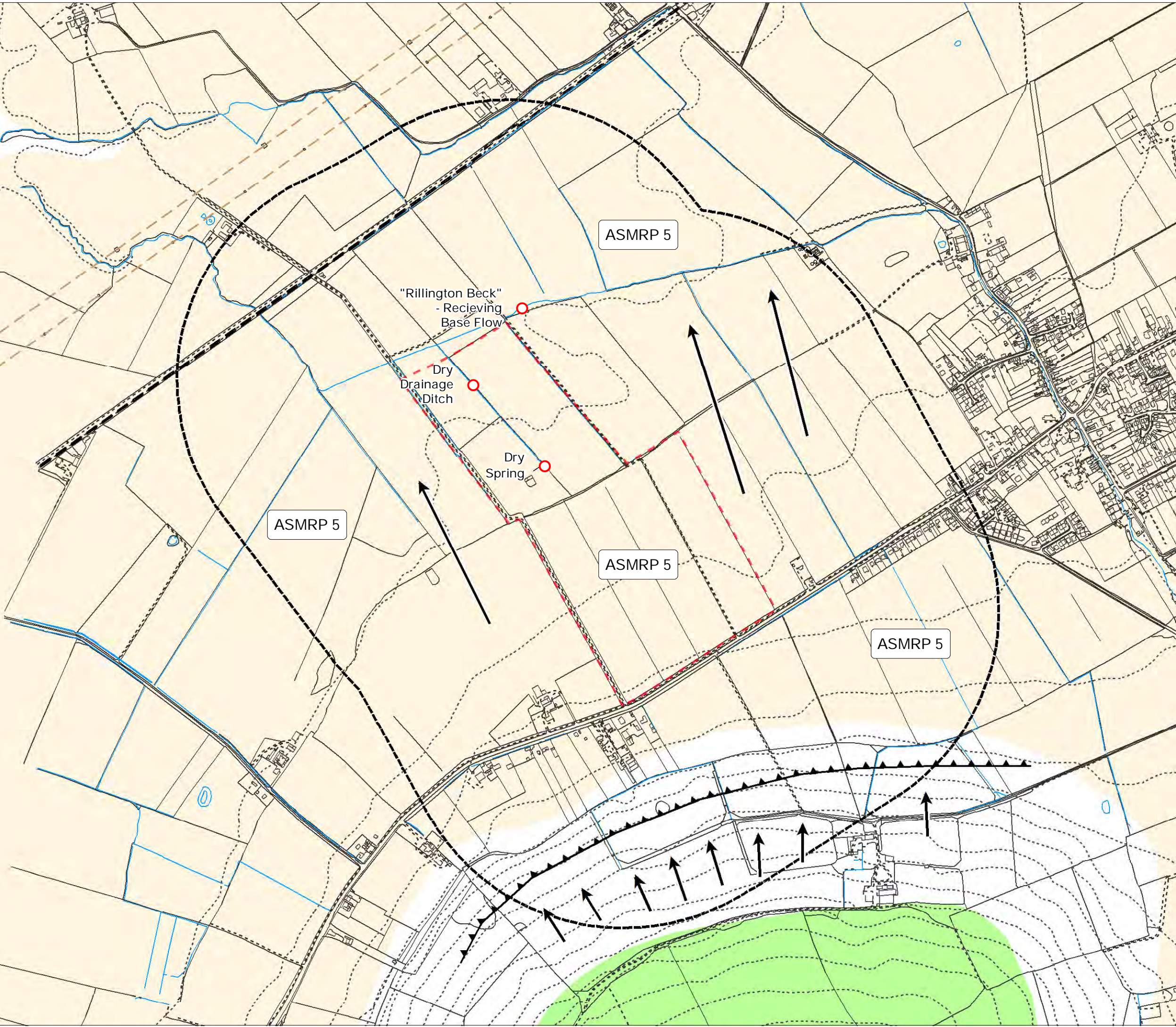
NYCC/BES/18376  
Managing Landscape Change

**ASMRP 4  
LANDFORM ELEMENT CLASSIFICATION**

Drawn By	KJ
Checked By	SG
Approved By	JG
Drawing No	CS_049966_01_060_Rev1
Date	20 September 2011

**CAPITA SYMONDS**

The Capita Building  
Kingmoor Business Park  
Carlisle  
CA6 4SJ



**Key**

**Landform Elements**

- Glacial Till
- High Plateaux
- Mine Shaft
- Shake Hole
- Subsidence Hollow
- Downward Ground Slope (\*\*)
- Historic River Channel
- Scarp
- Steepsided Valleys
- Terrace
- Alluvium
- Dry Valley
- Earth Mound (manmade)
- Esker
- Hummocky Surface
- Morraine
- Ridge
- Sandstone (subsurface)
- Slate Band
- Field Note
- Sample Area
- 500m Buffer

**Resource Potential**

<b>ASMRP 1: Sand and Gravel</b> Sub-alluvial	<b>ASMRP 8: Limestone</b> Jurassic
<b>ASMRP 2: Sand and Gravel</b> River Terrace	<b>ASMRP 9: Limestone</b> Permian
<b>ASMRP 3: Sand and Gravel</b> Glaciofluvial	<b>ASMRP 10: Coal (shallow)</b>
<b>ASMRP 4: Sand and Gravel</b> Glacial	<b>ASMRP 11: Brick Clay</b> Carboniferous
<b>ASMRP 5: Sand and Gravel</b> Undifferentiated	<b>ASMRP 12: Sandstone</b>
<b>ASMRP 6: Brick Clay</b> Quaternary	<b>ASMRP 13: Silica</b> Carboniferous
<b>ASMRP 7: Chalk</b>	<b>ASMRP 14: Limestone</b>

**Notes**

\* Asterisk on field notes indicate accompanying site photographs

\*\* Length of downward slope arrows indicative of gradient. (short = steep, long = shallow)

Scale 1:8,000

Client

(C) Crown Copyright and database right 2011. Ordnance Survey 100017946 North Yorkshire County Council

NYCC/BES/18376  
Managing Landscape Change

**ASMRP 5  
LANDFORM ELEMENT CLASSIFICATION**

Drawn By	KJ
Checked By	SG
Approved By	JG
Drawing No	CS_049966_01_061_Rev1
Date	20 September 2011

**CAPITA SYMONDS**

The Capita Building  
Kingmoor Business Park  
Carlisle  
CA6 4SJ