

# Pannal and Burn Bridge Parish Council

## **PANNAL & BURN BRIDGE PARISH COUNCIL**

### NEIGHBOURHOOD PLAN – NEIGHBOURHOOD AREA

#### **Supporting Statement**

It is the intention of the Pannal and Burn Bridge Parish Council (P&BBPC) to create a Neighbourhood Plan, working in consultation with key stakeholders, including but not limited to: Harrogate Borough Council, North Yorkshire County Council, other key public bodies, residents, community and environmental organisations, agriculture and rural interests and all those interested in development.

Pannal and Burn Bridge Parish Council therefore wish to formally apply for the designation of Pannal and Burn Bridge as a Neighbourhood Area; the precise area is shown on the attached map and is the area administered by the Pannal and Burn Bridge Parish Council. This area is considered appropriate to be designated as a Neighbourhood Area as it encompasses all aspects of life in our community including agriculture, business, commercial, domestic, cultural, recreational, educational and social.

As the proposed selected Neighbourhood Area is the same area as the Pannal and Burn Bridge Parish and as there are no other adjoining parish councils with similar structures or needs, P&BBPC decided that there was no need to pursue any consultations on the issue of joint plan-making.

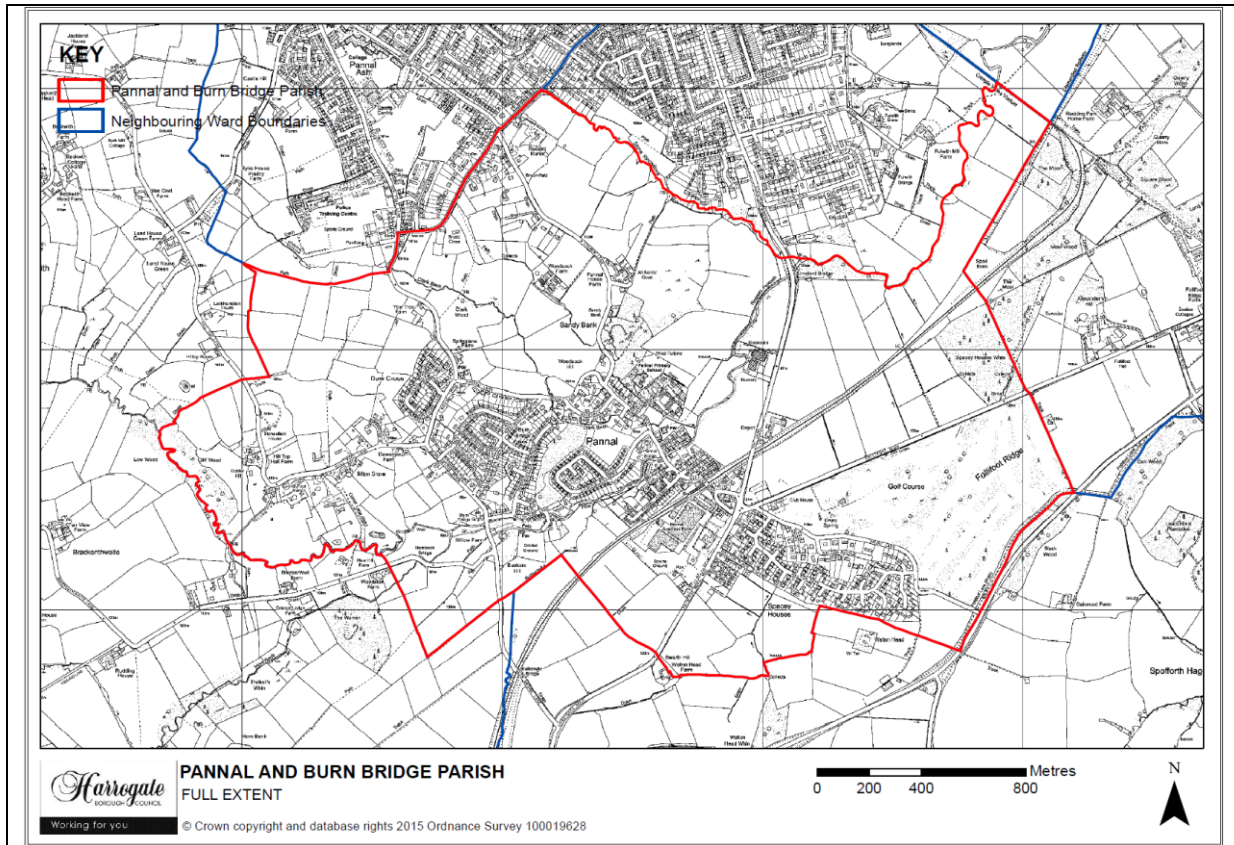
P&BBPC recognises the need to balance growth and development within the housing and business sectors against the sensitivity of the existing environment, its relationship to the landscape and culture and the present and future challenges of climate change

As per section 61G S2a of the 1990 Town and Country Planning Act as amended by the Localism Act 2012, which states a Parish Council as a Qualifying Body. Pannal and Burn Bridge Parish Council is a suitable “Qualifying Body” for the purpose of developing a Neighbourhood Plan

P&BBPC has established a Steering Group which is to consist of three Parish Councillors (already appointed) and at least three members from the Pannal and Burn Bridge community. The Steering Group will report to the Parish Council and will be supported by a number of Focus Groups who will work on a number of specific assignments. The Focus Groups will report to the Steering Group Chair (The chair being a Parish Councillor – already appointed – *The Deputy Parish Council Chair*). Terms of reference have been established and the names and details of the members of both the Steering Group and the Focus Groups will be held on ‘Lists of Members’. A Neighbourhood Plan Management Structure will also be made available.

The Steering Group will maintain a continuing dialogue between all the participating Authorities, the community as a whole and key partners, local organisations, developers, individuals and the local planning authority to ensure that the eventual Neighbourhood Plan responds and meets their aspirations and that the developing HBC local plan criteria are met within the Neighbourhood Plan and throughout its life

# Pannal and Burn Bridge Parish Council



Extract from Pannal and Burn Bridge Parish Council Committee minutes of 27<sup>th</sup> April authorising the Parish Council to proceed formally with the Neighbourhood Plan.

The full minutes can be seen on the Parish Council's website at:  
<http://www.pannalandburnbridge-pc.gov.uk/FullCouncil.aspx>

7. Neighbourhood Plan.
  - a. It was Resolved to proceed formally with the Neighbourhood Plan, starting on 1<sup>st</sup> May 2017. A letter will be sent to HBC with the required details.