

# Scarborough Harbour

## LOCAL NOTICE TO MARINERS

### Harbours, Docks and Piers Clauses Act 1847

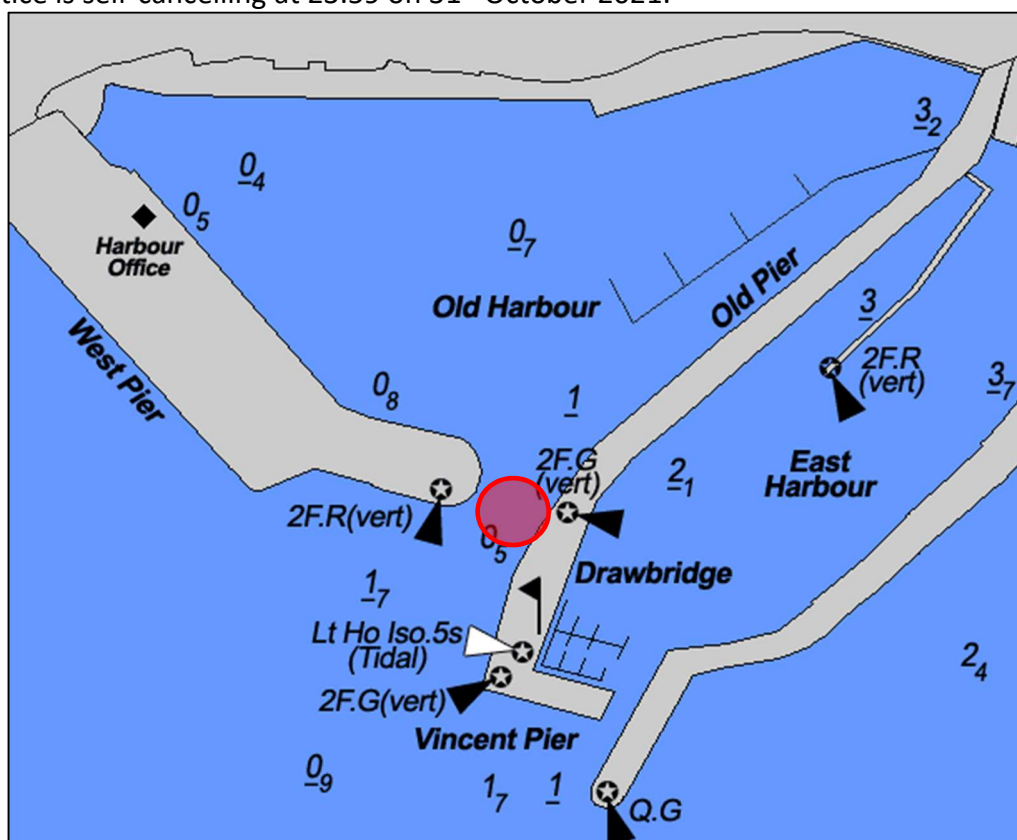
#### Wooden Debris in Main Navigable Channel

All Mariners are advised that a wooden beam has been lodged in the seabed in the main navigable channel between the LPS watch tower and the Sydney Smith powered bridge that may cause a risk to vessels with a deep draft operating at low water.

All mariners are advised to proceed with caution when proceeding through the channel at Low Water and to seek advice from *Scarborough LPS* on VHF Channel 12

Further operational advice can be obtained from Scarborough LPS on VHF Channel 12 or Scarborough Harbour Office.

This notice is self-cancelling at 23:59 on 31<sup>st</sup> October 2021.



Capt. Chris Burrows,  
Borough Harbour Master