



**BARLBY ROAD
LANDSCAPE
STRATEGY**

MAY 2021



The Assembly Rooms
29 Market Place, Bedale
North Yorkshire DL8 1ED

T: 07887 573222 E: admin@mwla.net

DOCUMENT CONTROL

TITLE: LANDSCAPE OVERVIEW STRATEGY

PROJECT: BARLBY ROAD, SELBY

JOB NO: L2.483

CLIENT: SELBY DISTRICT COUNCIL

Copyright of Martin Woolley Landscape Architects. All Rights Reserved

Status	Date	Notes	Revision	Approved
DRAFT	28 June 2021	Work in Progress issue for client progress meeting		MW
FINAL	9 Dec 2021	Amended following SDC internal consultation	1	MW

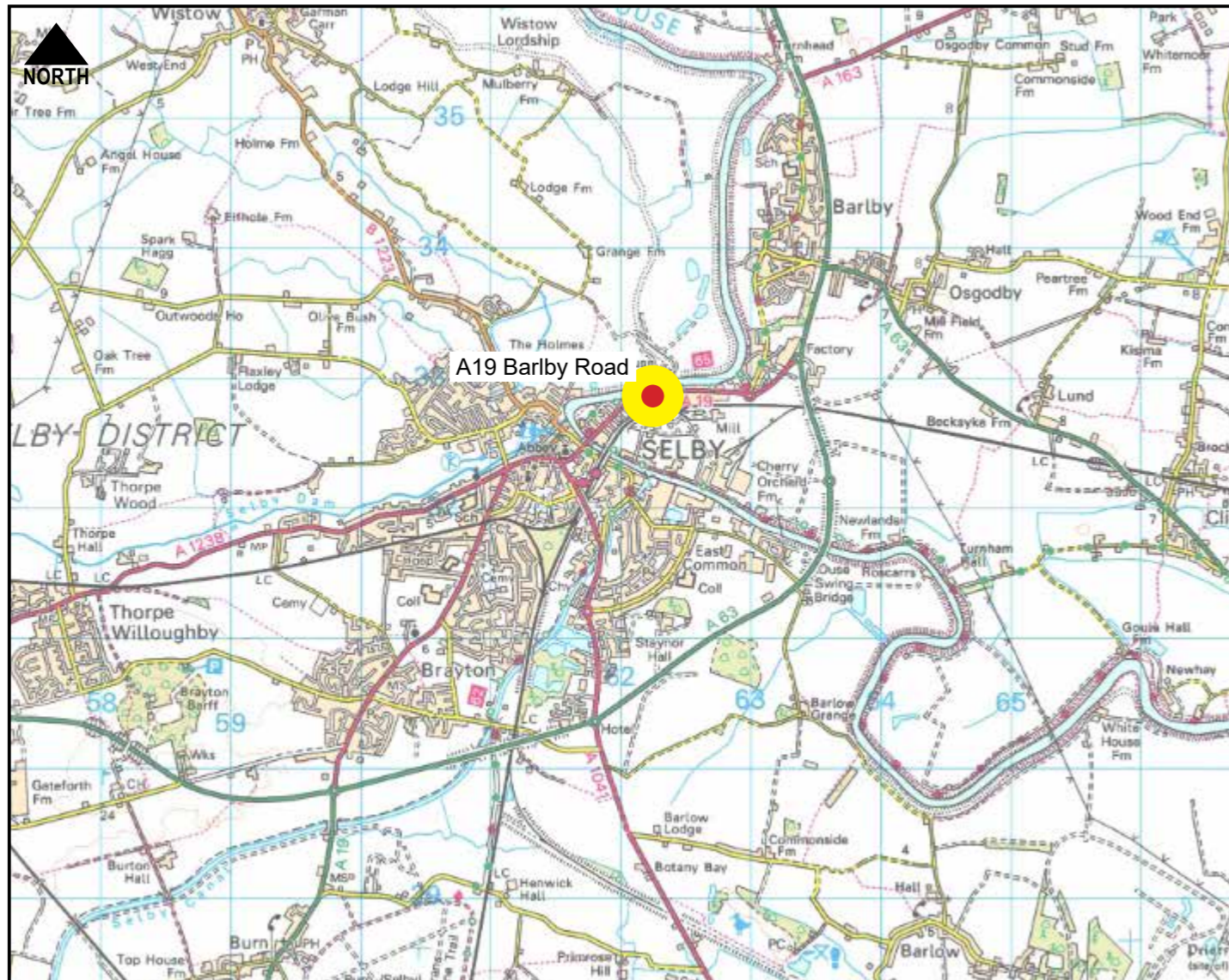
CONTENTS

Introduction	1
Scope	1
Landscape & Visual Analysis	
Serial Vision Viewpoints - Barlby Road	3
Barlby Road Photographs/Analysis	4
Serial Vision Viewpoints - Trans Pennine Trail	13
Trans Pennine Trail Photographs/Analysis	14
Analysis Plans	16
Landscape Strategy	
Concept Plan - Section A	20
Concept Plan - Section B	21
Concept Plan - Section C	22
Typical Sections	23
Sketches	24

1.0 INTRODUCTION

- 1.1 Over recent years, the Barlby Road A19 road corridor, has suffered degradation from the piecemeal demolition of commercial buildings and decay of riverside wharfs and jetties. This is having a negative effect on the roads function as a main gateway into the town of Selby.
- 1.2 A once in a generation opportunity has arisen, with the co-operation of ForFarmers, to achieve a significant improvement to the Barlby Road corridor as a new visual gateway to the town of Selby. This will be achieved primarily through the landscaping of both sides of the road taking account of local urban landscape character and any remaining heritage value from previous land uses.
- 1.3 Selby District Council have appointed Martin Woolley Landscape Architects to produce a Landscape Strategy to provide a possible 'blueprint' for the recommended improvements.

LOCATION PLAN



STUDY AREA



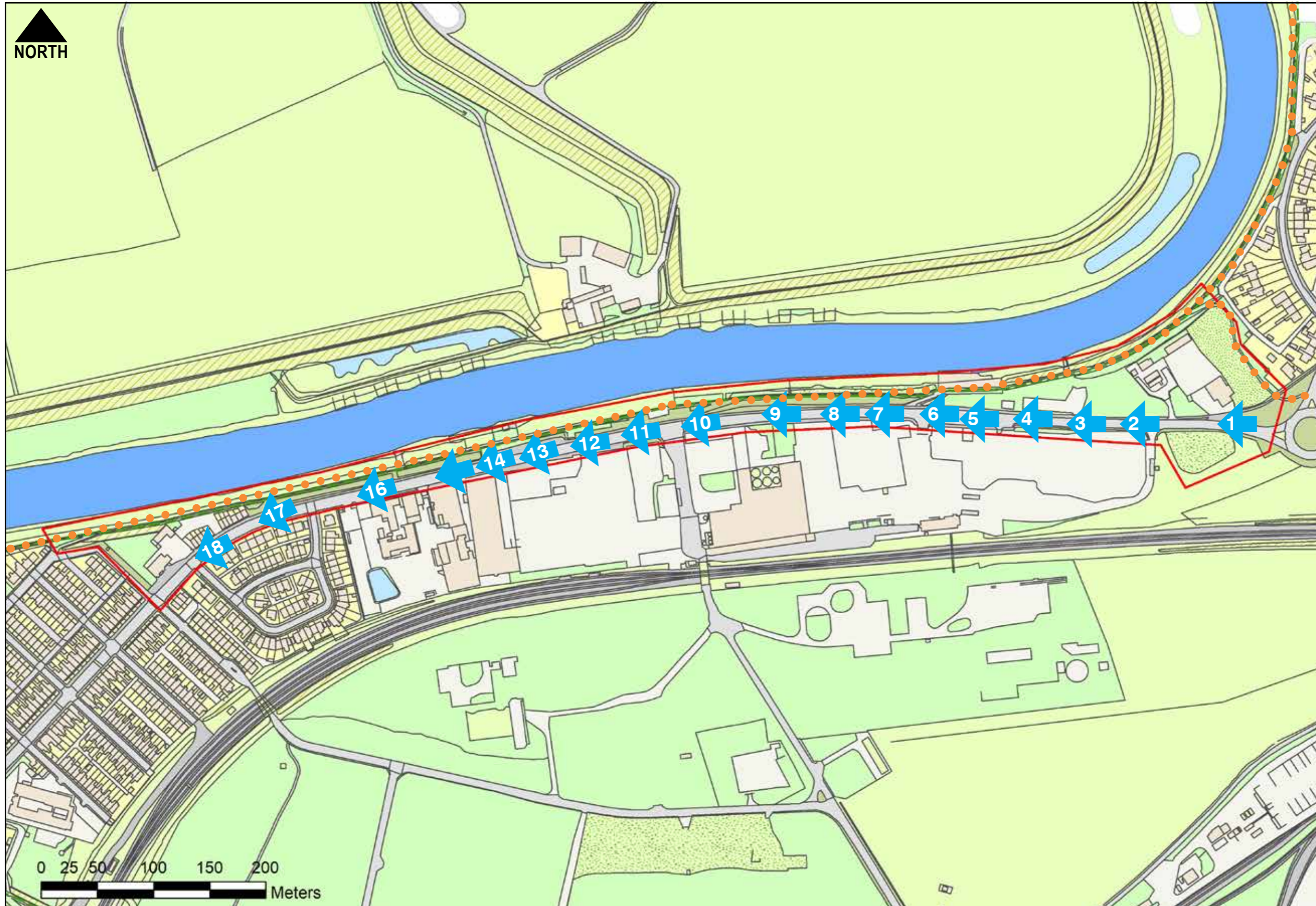
2.0 SCOPE

- 2.1 The objective of the Landscape Strategy is to provide strategic landscape design guidance for a potential new gateway to Selby town centre along Barlby Road.
- 2.2 The Strategy includes an objective commentary of the positive and negative environmental qualities of the 'unfolding' views travelling towards the town centre from the Greencore roundabout at the junction of the A19 and A63 to the north of the town centre.
- 2.3 Analysis comments are recorded against a 'serial vision' of photographs from east to west, as if travelling by road towards the town centre, or walking or cycling along the Trans Pennine Trail running adjacent to the southern banks of the River Ouse.
- 2.4 A Landscape Analysis plan shows the location of the key findings of the 'serial vision' analysis.
- 2.5 The landscape design strategy will be developed from the landscape and visual analysis to provide a possible 'blueprint' for developing a new visual gateway to the town centre along Barlby Road and the Trans Pennine Trail.




LANDSCAPE & VISUAL ANALYSIS

LANDSCAPE & VISUAL ANALYSIS

Serial Vision Photo Viewpoints - Barlby Road



KEY

-  Study Area
-  Trans-Pennine Trail
-  Photo Viewpoint

The Serial Vision photographs show a progression from east to west along Barlby Road towards the town centre to demonstrate the gateway arrival experience by road users.

LANDSCAPE & VISUAL ANALYSIS

Barlby Road Serial Vision (east to west)



1

Designed semi-circle tree planting either side of road creates enclosure to grassland areas and a green 'arrival' point to Barlby Road

Redundant depot and yard create air of neglect



2

Designed semi-circle tree planting creates enclosure to grassland areas and a green 'arrival' point to Barlby Road

Boundary fencing appears temporary and adds to sense of neglected public realm along Barlby Road

Utilitarian and dated narrow kerb undermines concept of a gateway to Selby town centre, as does numerous reinstatement and repairs to footpath surfaces

LANDSCAPE & VISUAL ANALYSIS

Barlby Road Serial Vision (east to west)



Demolition site with colonising vegetation and brick rubble 'anti-tipping' measure at kerbside increases sense of dereliction and uncared for land

2m high panelled brickwork relates to former land use and historic activity.



Mill buildings and apparent derelict appearance of boundaries and road verge becoming dominant characteristic travelling towards town centre

2m high panelled brickwork relates to former land use and historic activity. How significant in heritage terms?

Utilitarian and dated narrow kerb undermines concept of a gateway to Selby town centre

LANDSCAPE & VISUAL ANALYSIS

Barlby Road Serial Vision (east to west)



Panelled red brickwork and retention of wooden entrance. How significant in heritage terms?



Derelict chain link fencing and brick rubble boundary 'wall' add to sense of disrepair along road corridor



Scaffold poles on low brickwork with piers for entrance. Poor quality boundary treatments adds to air of dereliction and urban decay. North facing boundaries appear dark at all times casting shadow across footpaths

Former landscaped area unmanaged and require refurbishment to improve visual quality of road corridor



LANDSCAPE & VISUAL ANALYSIS

Barlby Road Serial Vision (east to west)



Grassed embankment and brick wall to river bank vegetation provides a welcome green setting to road corridor. Opportunity for improving habitat diversity and road corridor setting as a gateway to town centre

Continuation of poor quality boundary fencing detracts from green embankment setting



Mill buildings (and derelict appearance of boundaries and road verge) becoming dominant characteristic travelling towards town centre, despite green embankment

Heras security fencing and overgrown demolition site continue sense of urban decay along road corridor. What was likely to have been a temporary measure appears to have existed for many years given height of colonising vegetation

LANDSCAPE & VISUAL ANALYSIS

Barlby Road Serial Vision (east to west)



Whitworth Flour Mills becoming dominant skyline feature of road corridor travelling towards town centre

Extended continuity of brick panel boundary walling and grass embankment provide a welcome change to character of road corridor.



Opportunity to explain significance of historical features related to Selby's industrial past. Need to establish heritage significance

LANDSCAPE & VISUAL ANALYSIS

Barlby Road Serial Vision (east to west)



11

Former landscaped area with step access unmanaged and requires refurbishment or redesign to improve visual quality of road corridor



12

Whitworth Flour Mills becoming increasingly dominant iconic skyline feature of road corridor travelling towards town centre

Former ramp access to riverside wharfs and jetties appear derelict and detract from visual quality of grass embankment

Low drystone stone retaining wall is part of former landscaped area and requires refurbishment or redesigning

LANDSCAPE & VISUAL ANALYSIS

Barlby Road Serial Vision (east to west)



13

Former landscaped area with access to Trans Pennine Trail is unmanaged and requires refurbishment or redesign to improve access quality and visual quality of road corridor



14

Canyon effect created from exceptionally tall 'landmark' mill buildings to the south side of Barlby Road and riverside embankment to the north side. Canyon effect emphasised by mill buildings always in shade and casting heavy shadow in bright sunlight

Bland roadside elevation of Whitworth reception building in comparison to 'iconic' historic mill building

LANDSCAPE & VISUAL ANALYSIS

Barlby Road Serial Vision (east to west)



Strong contrast between historic brick flour mills and more recent concrete and steel clad mills. Heavy shade cast at midday in Summer



Mature Poplar trees along river bank have become a local landmark (local hearsay) in relatively close proximity to Whitworth landmark flour mills

Whitworth Flour Mills entrance marks transition from industrial land use along Barlby Road to residential area extending to Selby Bridge river crossing and heart of town centre

LANDSCAPE & VISUAL ANALYSIS

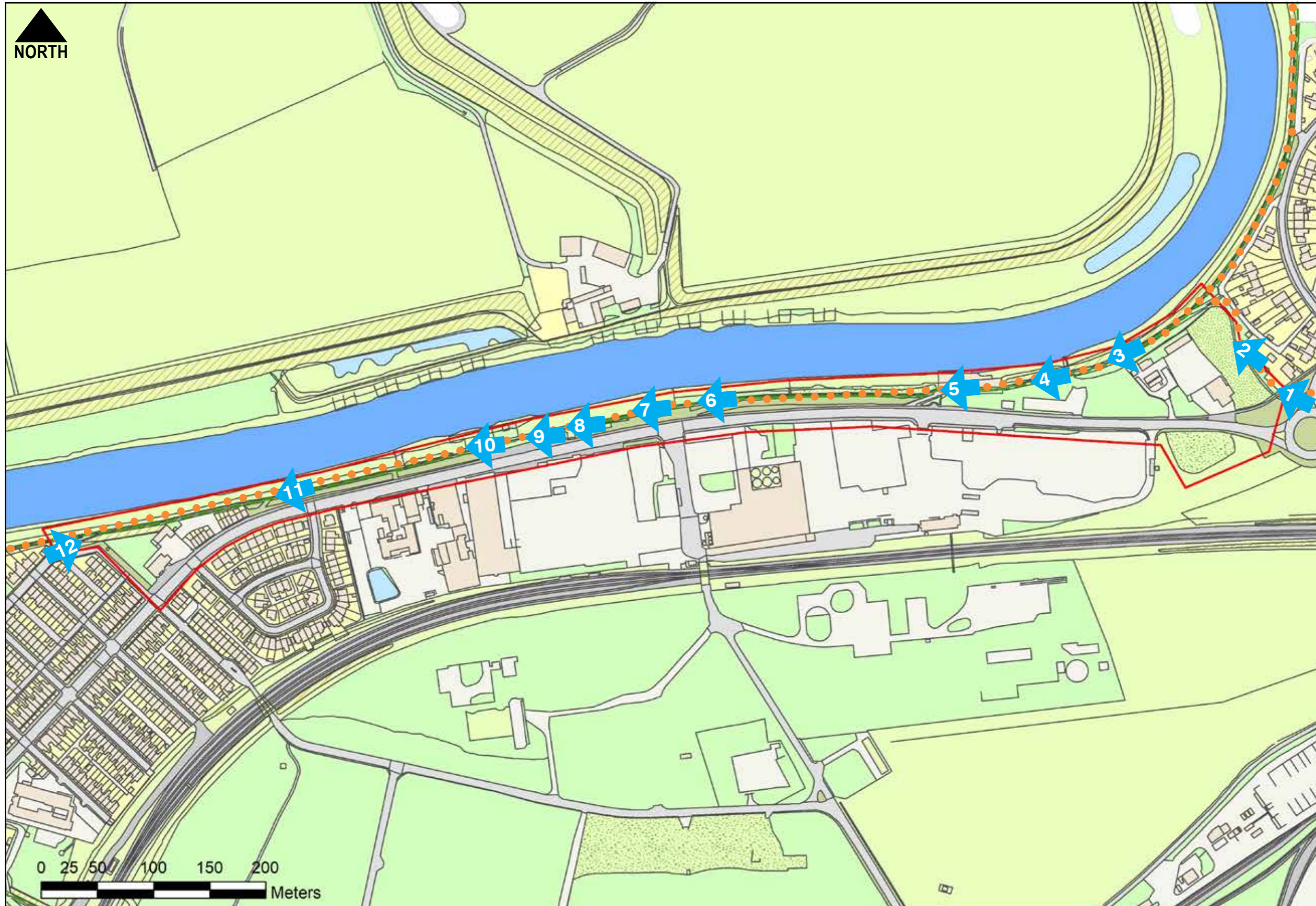
Barlby Road Serial Vision (east to west)






First views of Selby Abbey travelling along Barlby Road towards Selby town centre. Potential opportunity to significantly upgrade the road corridor to convey a sense of pride for a gateway to Selby

LANDSCAPE & VISUAL ANALYSIS

Serial Vision Photo Viewpoints - Trans Pennine Trail



KEY

-  Study Area
-  Trans-Pennine Trail
-  Photo Viewpoint

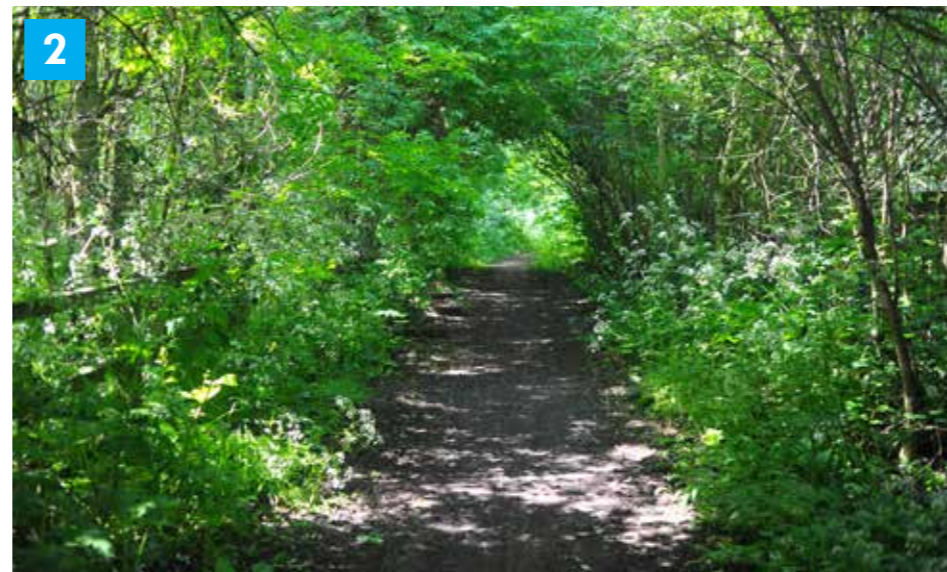
The Serial Vision photographs from east to west along the Trans Pennine Trail (National Cycle Network Route 65) demonstrate the gateway arrival experience for walkers and cyclists to Selby town centre.

LANDSCAPE & VISUAL ANALYSIS

Trans Pennine Trail Serial Vision (east to west)



1 Link to Trans Pennine Trail (TPT) from Barlby Road. Some refurbishment of signage and fixtures required to improve visual quality



2 Enclosed wooded link to TPT



3 Attractive 'green corridor' of TPT approaching Barlby Road. Few direct views to River Ouse

Incidental views from Trans Pennine Trail



Derelict wharfs and jetties fenced off with 'Danger, Keep Out' signs

Former landscaped access requires refurbishment/re-design

Former access to wharfs and jetties would benefit from enhancement



4



5



6

LANDSCAPE & VISUAL ANALYSIS

Trans Pennine Trail Serial Vision (east to west)



Stepped access requires link to TPT and refurbishment/re-design



Former landscaped enhancement area requires maintenance refurbishment



TPT varies in trail quality and spatial enclosure from vegetation

Incidental views from Trans Pennine Trail



Elevated view of canyon effect from tall mill buildings



Former landscaped access requires refurbishment/re-design

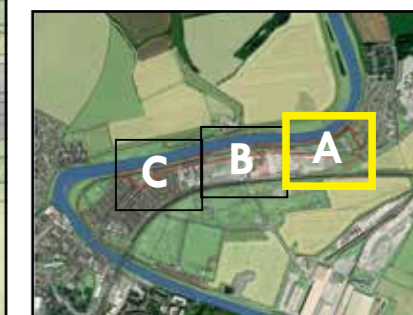
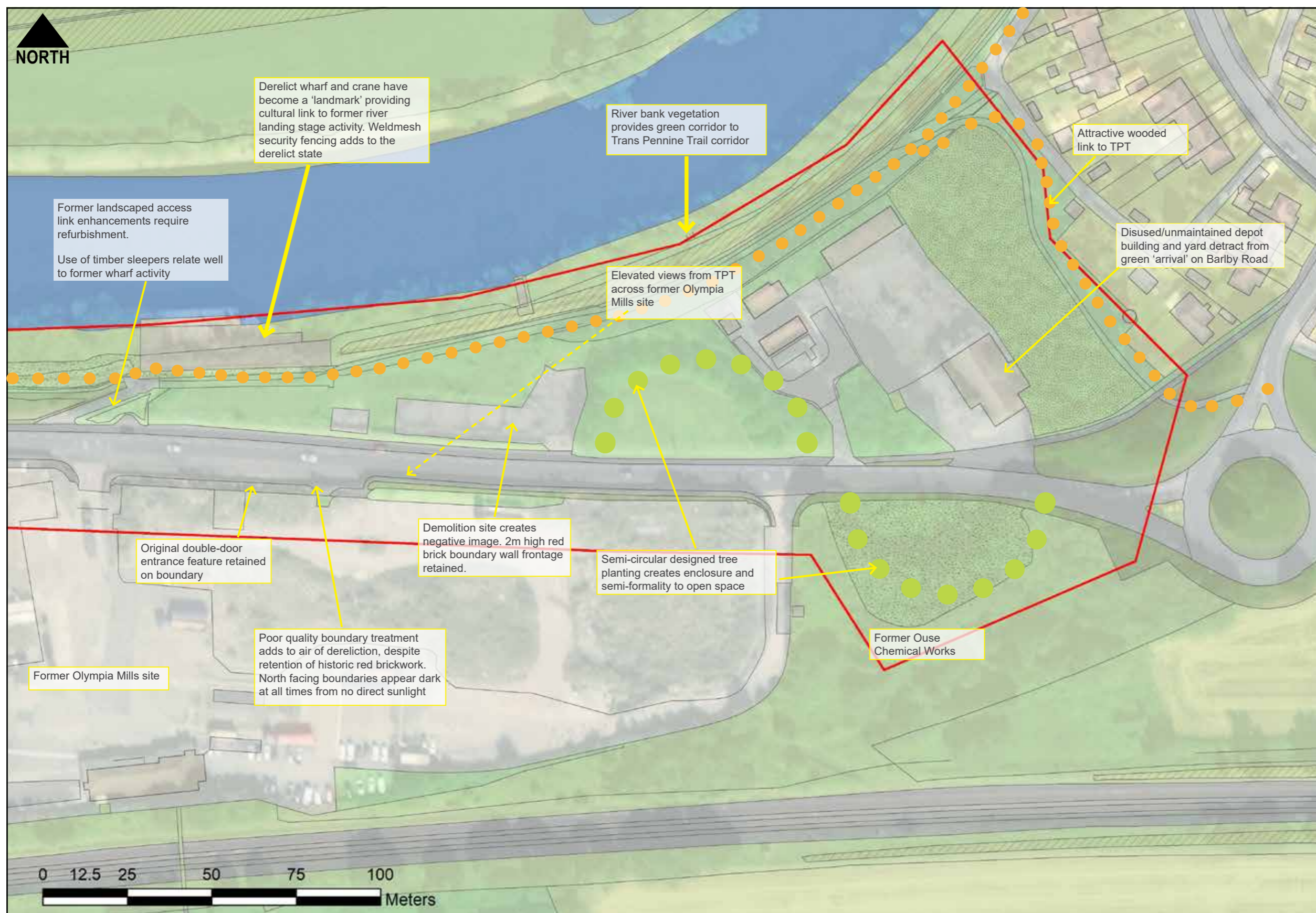


Link to Trans Pennine Trail (TPT) from Bungalow Road. Some refurbishment of signage and fixtures required to improve visual quality



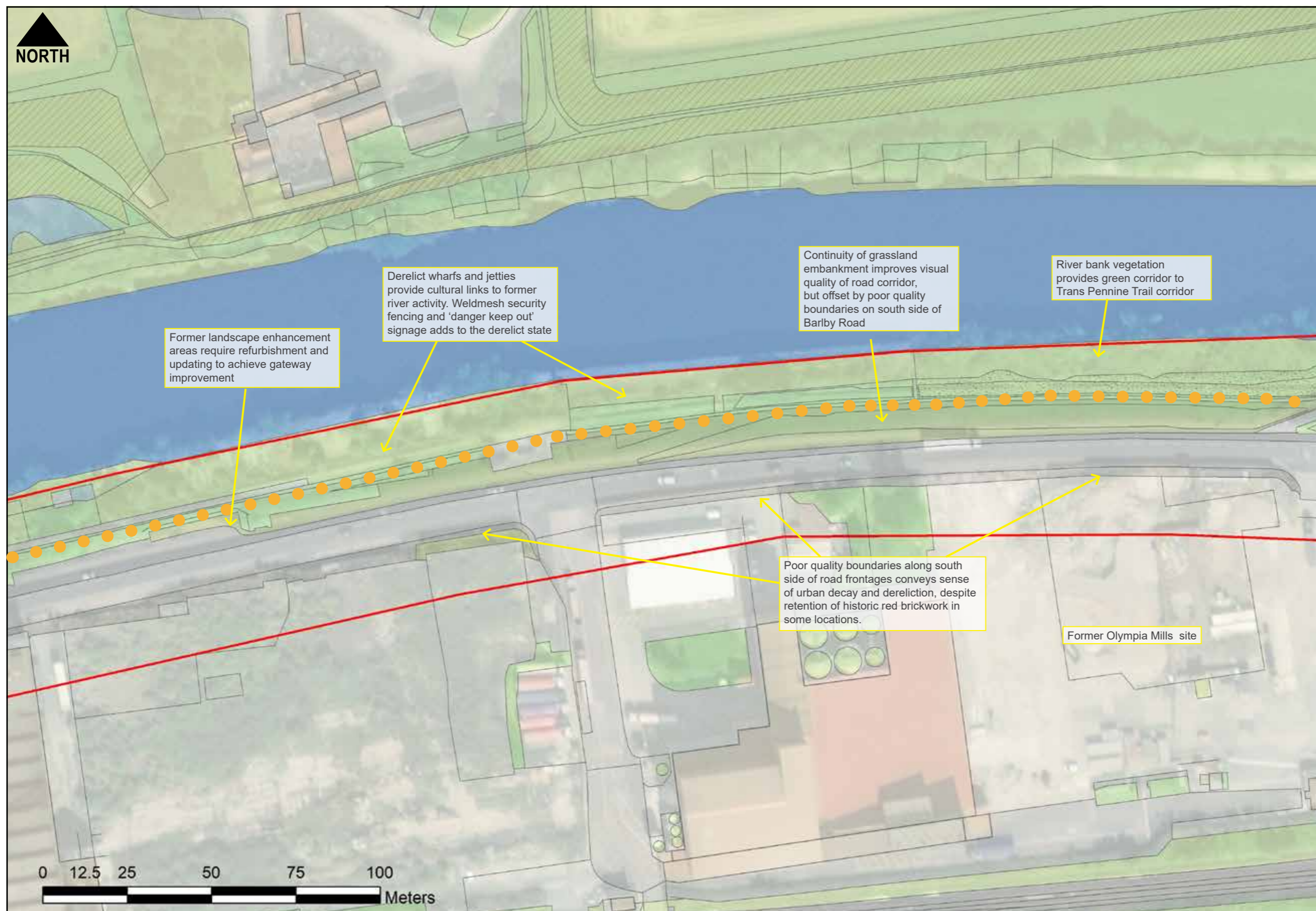
LANDSCAPE & VISUAL ANALYSIS

Analysis Plan - Section A



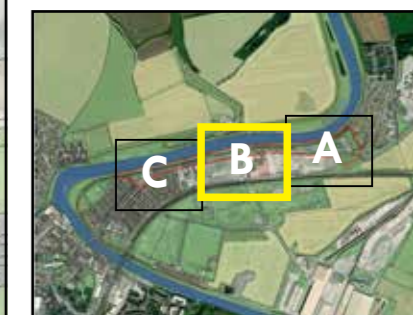
LANDSCAPE & VISUAL ANALYSIS

Analysis Plan - Section B



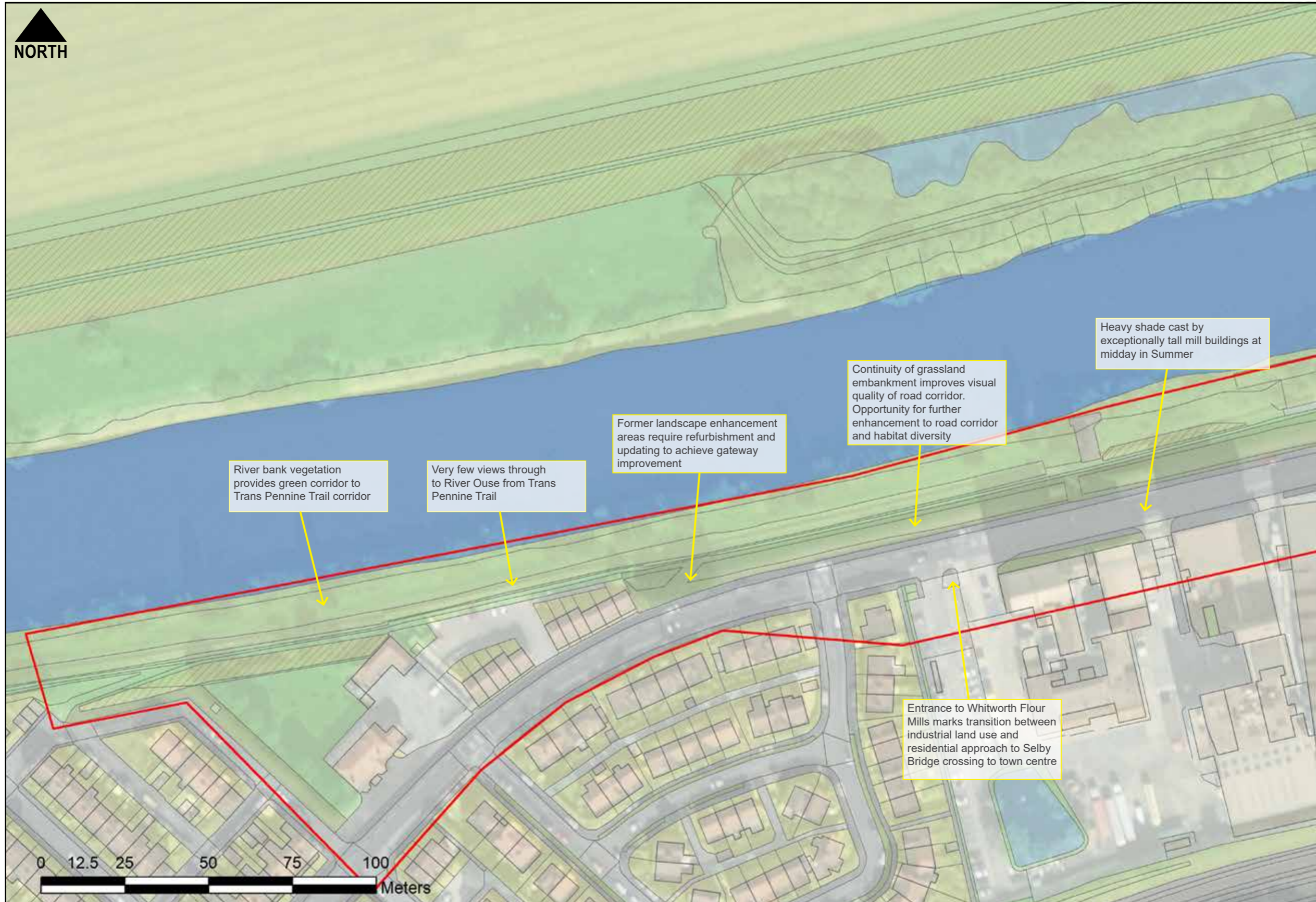
KEY

- Study Area
- Trans-Pennine Trail



LANDSCAPE & VISUAL ANALYSIS

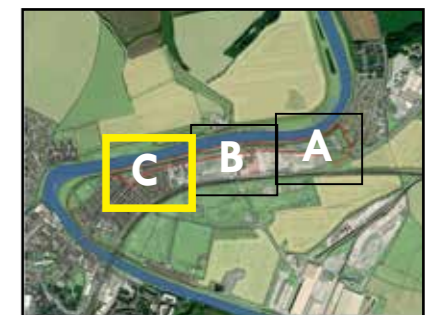
Analysis Plan - Section C



KEY

Study Area

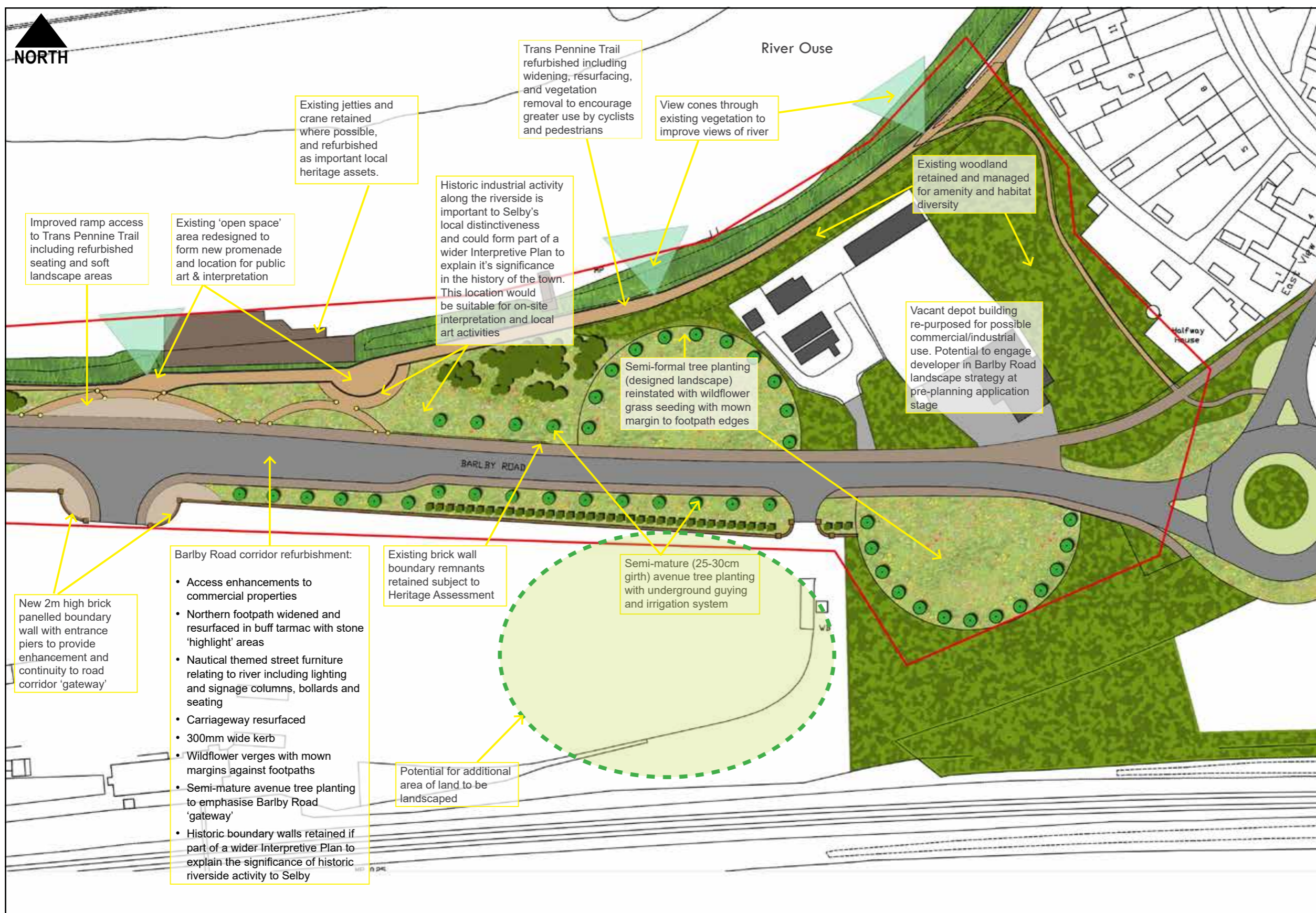
● ● ● Trans-Pennine Trail



LANDSCAPE STRATEGY

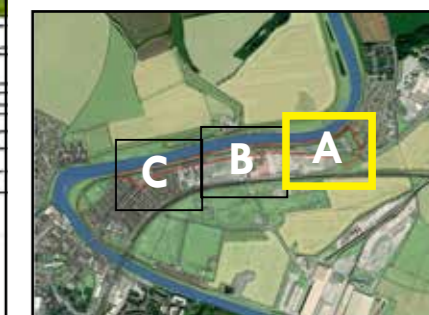
LANDSCAPE STRATEGY

Concept Plan - Section A



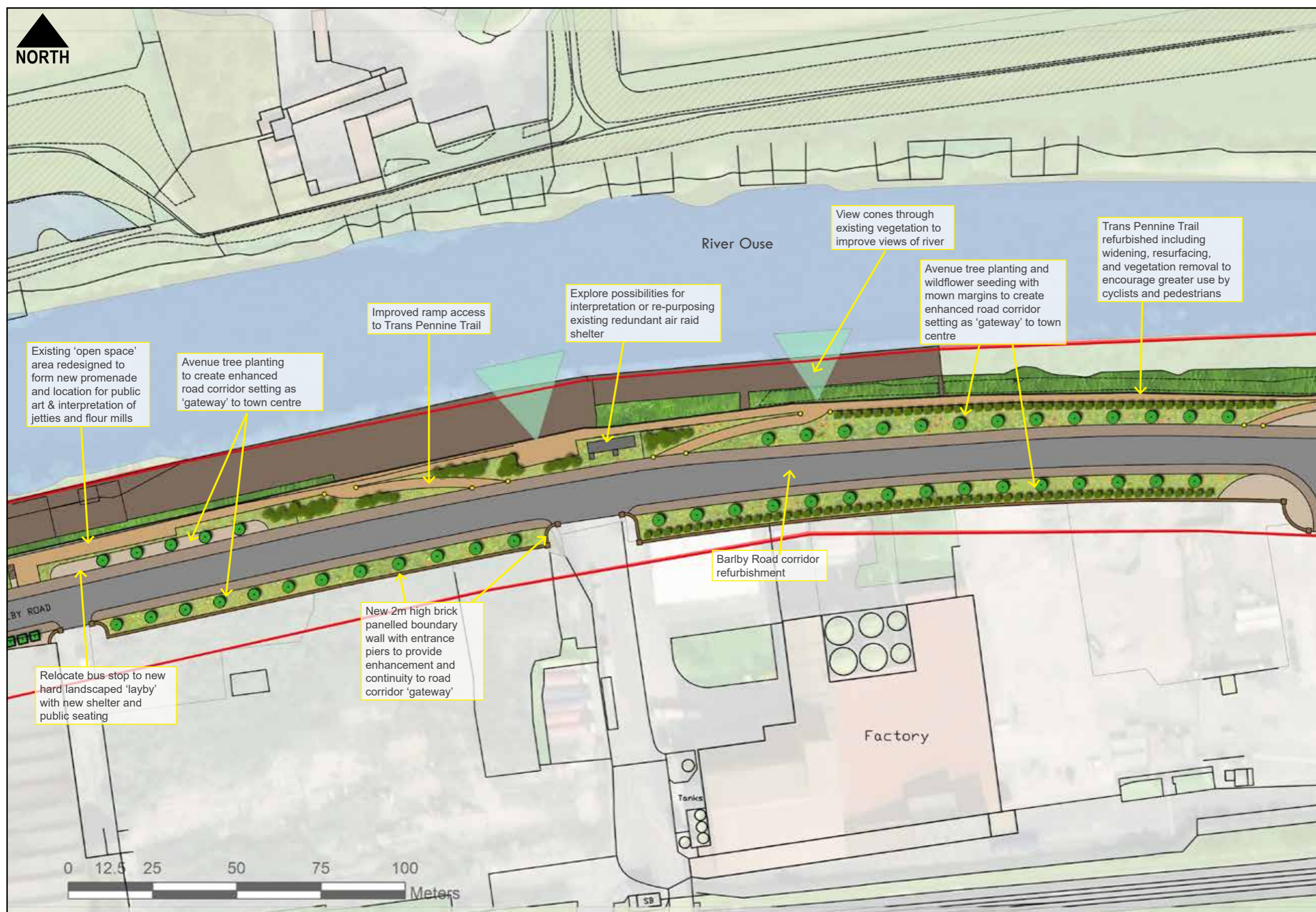
KEY

	Study Area
	Existing woodland
	Existing river bank 'green corridor'
	New tree planting
	New native woodland copse planting
	New amenity shrub planting
	Wildflower grass seeding with turf margins
	Footpath, kerb and lighting refurbishment
	Trans Pennine Trail refurbishment
	New 2m high boundary wall to road corridor
	New hard/soft landscape areas with seating
	New nautical themed lighting bollards
	Create views through vegetation to river



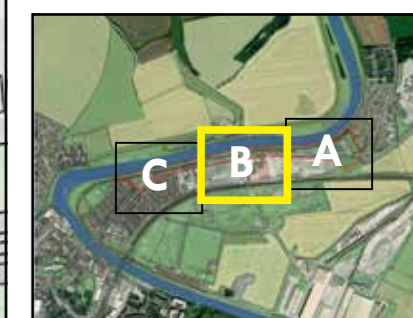
LANDSCAPE STRATEGY

Concept Plan - Section B



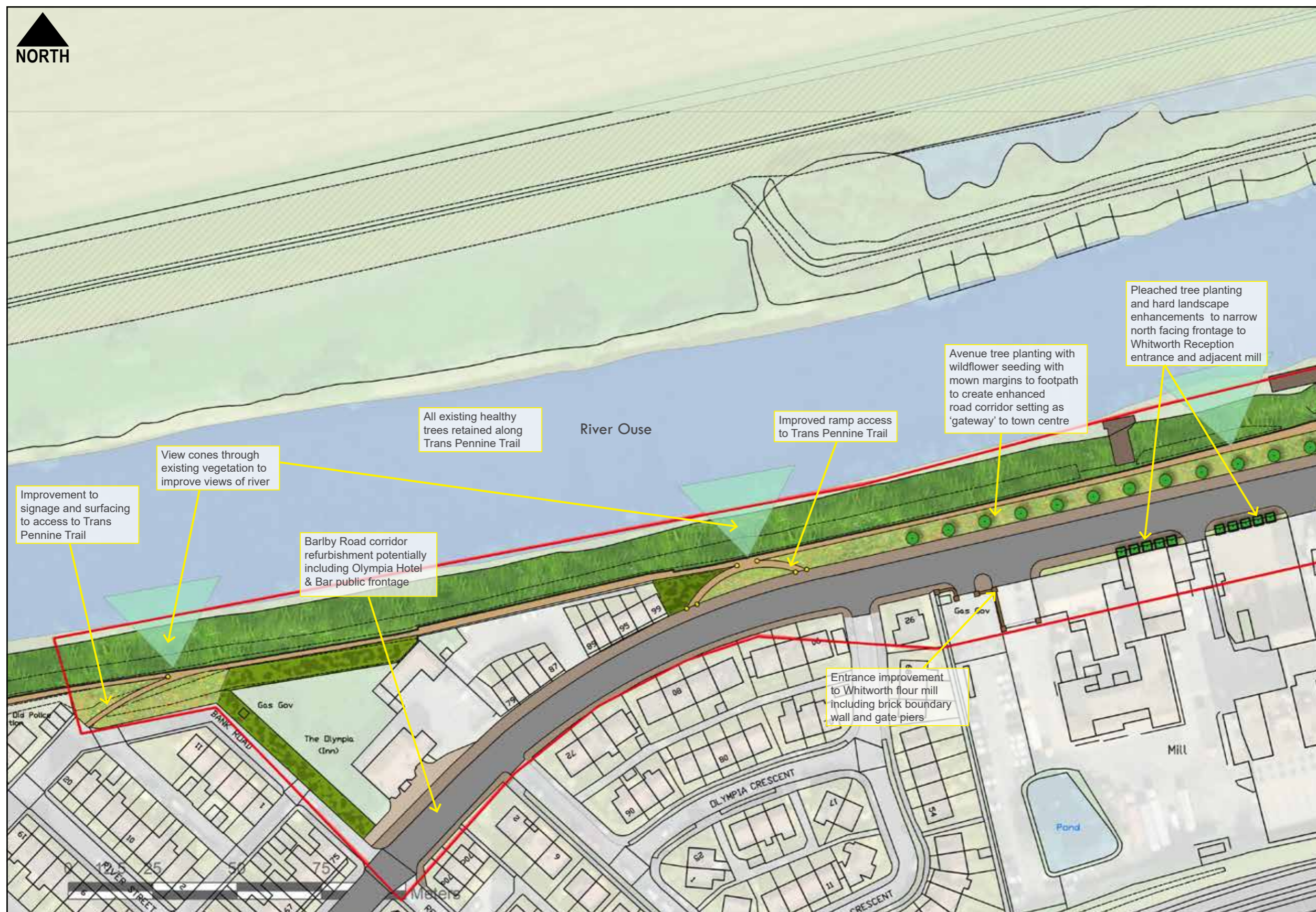
KEY

-  Study Area
-  Existing woodland
-  Existing river bank 'green corridor'
-  New tree planting
-  New native woodland copse planting
-  New amenity shrub planting
-  Wildflower grass seeding with turf margins
-  Footpath, kerb and lighting refurbishment
-  Trans Pennine Trail refurbishment
-  New 2m high boundary wall to road corridor
-  New hard/soft landscape areas with seating
-  New 'river themed' lighting bollards
-  Create views through vegetation to river











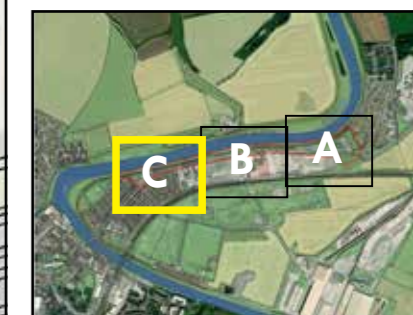
LANDSCAPE STRATEGY

Concept Plan - Section C



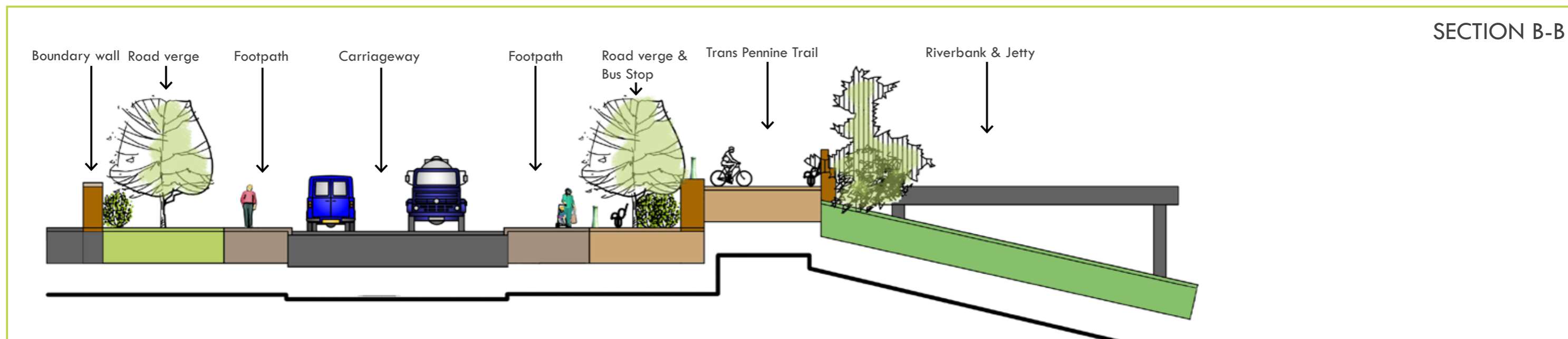
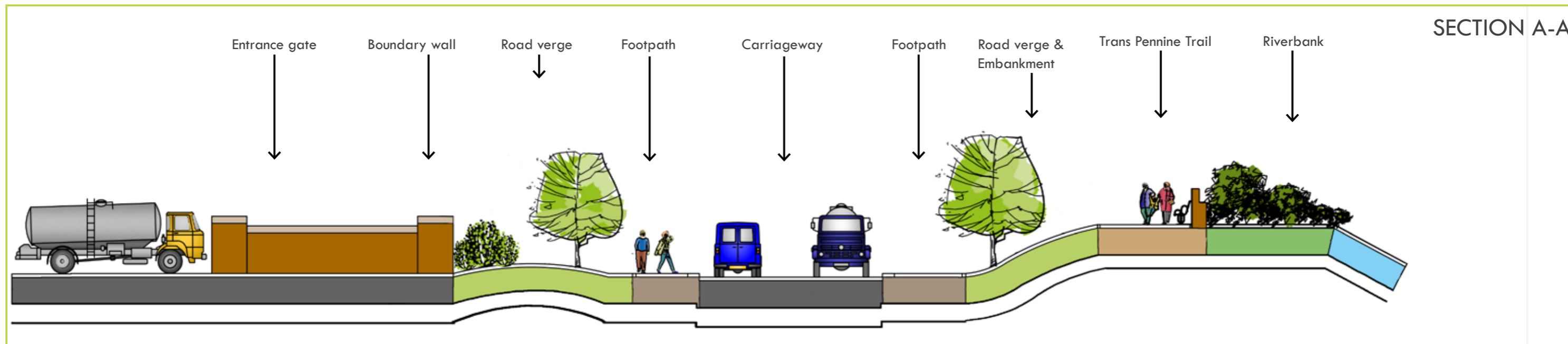
KEY

-  Study Area
-  Existing woodland
-  Existing river bank 'green corridor'
-  New tree planting
-  Wildflower grass seeding with turf margins
-  Footpath, kerb and lighting refurbishment
-  Trans Pennine Trail refurbishment
-  New 'river themed' lighting bollards
-  Create views through vegetation to river



LANDSCAPE STRATEGY

Typical Sections



LANDSCAPE STRATEGY

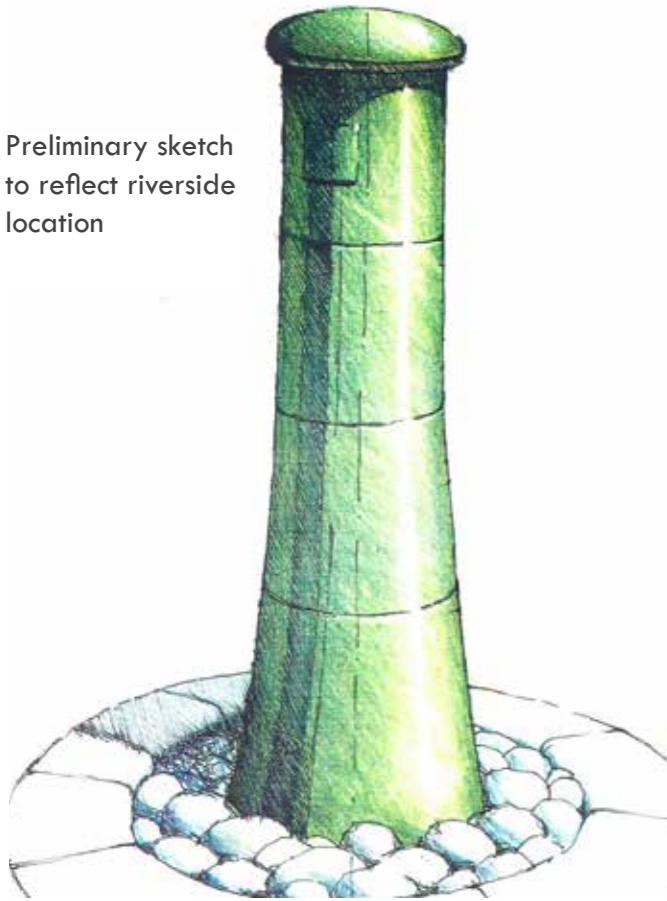
Sketches



LANDSCAPE STRATEGY

Sketches - Street Furniture Concept

Preliminary sketch to reflect riverside location



Painted steel flared bollard



Lighting bollard



Lighting/Signage column

Heavy duty 'mooring' bollard



Bench seating

