

SITE NOTICE

NOTICE OF CONFIRMATION OF A PUBLIC PATH DIVERSION ORDER AND DEFINITIVE MAP AND STATEMENT MODIFICATION ORDER

HIGHWAYS ACT 1980 WILDLIFE AND COUNTRYSIDE ACT 1981 THE NORTH YORKSHIRE COUNCIL

PUBLIC FOOTPATHS 05.43/26 AND 05.43/30 BOWLAND FELL PARK CROWTREES TOSSIDE, WIGGLESWORTH DIVERSION ORDER 2025

The above Order made under Section 119 of the Highways Act 1980 and Section 53A(2) of the Wildlife and Countryside Act 1981, was confirmed on 20 May 2025.

The effect of the Order as confirmed is to divert the Public Footpath(s) as follows:

Public Footpath 05.43/26 from SD 7808 5569 to SD 7804 5526, (Points D to G on the Plan) is diverted onto a new route from SD 7809 5573 to SD 7810 5568 to SD 7815 5556 to SD 7818 5556 to SD 7804 5526 (K-P-Q-R-G), via a pedestrian gate at SD 7818 5555 (Point S), with a width of 2.5 metres.

Also Public Footpath 05.43/30 is diverted as follows: From SD 7792 5592 to SD 7794 5582 (A-B), onto a new route from SD 7792 5592 to SD 7795 5584 (A-H) with a width of 2.5 metres continuing to SD 7794 5582 (H-B) with a width of 2 metres; and from SD 7801 5575 to SD 7808 5569 to SD 7835 5569 (C-D-F), onto a new route from SD 7801 5575 to SD 7806 5578 to SD 7809 5573 to SD 7828 5578 to SD 7835 5569 (C-J-K-M-F) with a width of 2.5 metres

A copy of the order as confirmed and the Order Map have been placed and may be seen free of charge during normal office hours at Ingleton Community Library, Main Street, Ingleton LA6 3HG (TEL: 01609 534504), North Yorkshire until Friday July 11th 2025. Copies of the Order and Map may be purchased from Countryside Access Services, North Yorkshire Council, County Hall, Northallerton, North Yorkshire, DL7 8AD (tel: 0300 131 2131) at a cost of £2, or can be downloaded free from our website www.northyorks.gov.uk/pathnotices

The Order comes into force on the date on which the Authority certifies, in accordance with Section 119(3)(b) of the 1980 Act, that work to the new section of path, described in Part 2 of the Schedule, has been completed, but if a person aggrieved by the Order wants to question its validity, or that of any provision contained in it, on the ground that it is not within the powers of the Highways Act 1980 as amended, or on the ground that any requirement of the Act, as amended, or of any regulation made under the Act has not been complied with in relation to the Order, he or she may, under Paragraph 2 of Schedule 2 to the Act as applied by Paragraph 5 of Schedule 6 to the Act, within six weeks from 29 May 2025, make an application to the High Court.

Dated 29 May 2025

Barry Khan
Assistant Chief Executive (Legal and Democratic Services)
County Hall Northallerton
North Yorkshire DL7 8AH



MAPS PRINTED ON A4 ARE NO LONGER TO SCALE

**PUBLIC PATH DIVERSION AND
DEFINITIVE MAP AND STATEMENT MODIFICATION ORDER**

HIGHWAYS ACT 1980

WILDLIFE AND COUNTRYSIDE ACT 1981

THE NORTH YORKSHIRE COUNCIL

**PUBLIC FOOTPATHS 05.43/26 AND 05.43/30 BOWLAND FELL PARK
CROWTREES TOSSIDE, WIGGLESWORTH DIVERSION ORDER 2025**

Barry Khan
Assistant Chief Executive
(Legal and Democratic Services)
County Hall
Northallerton
DL7 8AH

**PUBLIC PATH DIVERSION AND
DEFINITIVE MAP AND STATEMENT MODIFICATION ORDER**

HIGHWAYS ACT 1980

WILDLIFE AND COUNTRYSIDE ACT 1981

THE NORTH YORKSHIRE COUNCIL

**PUBLIC FOOTPATHS 05.43/26 AND 05.43/30 BOWLAND FELL PARK CROWTREES
TOSSIDE, WIGGLESWORTH DIVERSION ORDER 2025**

This Order is made by The North Yorkshire Council ("the Authority") under Section 119 of the Highways Act 1980 ("the 1980 Act") because it appears to the Authority that in the interests of the occupier(s) of the land crossed by the Public Footpath(s) described in Paragraph 1 of this Order, it is expedient that the line of the Public Footpath(s) should be diverted.

This Order is also made under Section 53A(2) of the Wildlife and Countryside Act 1981 ("the 1981 Act") because it appears to the Authority that The District of Craven (outside The Yorkshire Dales National Park) Definitive Map and Statement require modification in consequence of the occurrence of an event specified in Section 53(3)(a)(i) of the 1981 Act, namely, the diversion (as authorised by this Order) of a highway shown or required to be shown in the map and statement.

Park Holidays UK Ltd. Glovers End, Bexhill on Sea, East Sussex TN25 5ES has agreed to defray any compensation which becomes payable in consequence of the coming into force of this Order and any expenses which are incurred in bringing the new site of the Path(s) into a fit condition for use by the public.

Wigglesworth Parish Council (Part of Ribble Banks) has been consulted as required by Section 120(2) of the 1980 Act.

BY THIS ORDER:

1. The public right of way over the land situated at Bowland Fell Park, Crowtrees, Tosside, Wigglesworth and shown by a bold continuous line on the map contained in this Order and described in Part 1 of the Schedule to this Order shall be stopped up on the date on which the Authority certifies, in accordance with Section 119(3)(b) of the 1980 Act, that work to the new section of path, as described in Part 2 of the Schedule, has been completed to the reasonable satisfaction of the Authority and thereupon The District of Craven (outside The Yorkshire Dales National Park) Definitive Map shall be modified by deleting from it that public right of way. Under no circumstances shall such certification be given before the date of confirmation of this Order.
2. There shall from the date of the above mentioned certification be the Public Footpath(s) over the land situated at Bowland Fell Park, Crowtrees, Tosside, Wigglesworth described in Part 2 of the Schedule to this Order and shown by a bold broken line on the map contained in this Order and thereupon The District of Craven (outside The Yorkshire Dales National Park) Definitive Map shall be modified by adding the Public Footpath(s) to it.
3. The following Works shall be carried out by the applicant in relation to the highway described in Part 2 of the Schedule:
At Point S on the attached Plan: Install a Pedestrian Gate to BS 5709: 2018 and lay a level surface either side of the new gate, as required, to a minimum width of 2.5 metres with minimum 120 mm of crushed limestone aggregate, e.g. MoT Type 1
At Point F and vicinity: Repair Path surface to a minimum width of 2.5 metres with minimum 120 mm of crushed limestone aggregate, e.g. MoT Type 1, with below the surface, a suitably constructed and installed land-drain running northeastwards into the ditch
At Point G and vicinity: Remove construction materials and spoil-heap from line of Path and make good surface wheel-ruts.

4. The Culverts crossed by the Rights of Way created by this Order as described in the Schedule Part 2 below, shall be maintained by the Owner, to the full width of the track or way that crosses them; including but not limited to the Culverts at:
OSGR 37832 45572, 50 metres approximately northwest of Point F, and at
OSGR 37816 45574, 22 metres approximately west-southwest of Point L.
5. The rights conferred on the public under this Order shall be subject to the limitations and conditions set out in Part 3 of the Schedule.
6. The District of Craven (outside The Yorkshire Dales National Park) Definitive Statement shall be modified as described in Part 4 of the Schedule to this Order.

THE COMMON SEAL of THE
NORTH YORKSHIRE COUNCIL

was hereunto affixed this 25th
day of March 2025

in the presence of:-

PH



SCHEDULE

PART 1

DESCRIPTION OF SITE OF EXISTING PUBLIC FOOTPATH(S)

<u>Section of Public Footpath to be extinguished as shown on the attached map as a bold black continuous line</u>	<u>Position</u>	<u>Width</u>
Public Footpath 05.43/26 as shown on the attached map by a bold black continuous line D-G	Starts at Grid Reference 37808 45569 (Point D), its junction with Footpath 05.43/30 and proceeds generally southwards on grass through a mobile home park, to Grid Reference 37804 45526 (Point G); a distance of 430 metres approximately	0.9 metres
Public Footpath 05.43/30 as shown on the attached map by a bold black continuous line A-B	Starts at Grid Reference 37792 45592 (Point A) and proceeds generally southwards through an outbuilding and domestic garden to Grid Reference 37794 45582 (Point B), its junction with Footpath 05.43/32; a distance of 115 metres approximately	0.9 metres
Public Footpath 05.43/30 as shown on the attached map by a bold black continuous line C-D-E-F	Starts at Grid Reference 37801 45575 (Point C) and proceeds generally southeastwards for 107 metres approximately through buildings to Grid Reference 37808 45569 (Point D), its junction with Footpath 05.43/26; and continues eastwards for 273 metres approximately in a ditch and on grass to pass Grid Reference 37811 45569 (Point E), to Grid Reference 37835 45569 (Point F); a total distance of 380 metres approximately	0.9 metres

PART 2

DESCRIPTION OF SITE OF NEW PUBLIC FOOTPATH(S)

<u>Section of Public Footpath to be created as shown on the attached map as a bold black broken line</u>	<u>Position</u>	<u>Width</u>
Public Footpath 05.43/26 shown on the attached map by a bold black broken line K--E--P--Q--R--S--G	Starts at Grid Reference 37809 45573 (Point K), its junction with Footpath 05.43/30, and proceeds southeastwards on tarmac for 43 metres approximately to Grid Reference 37811 45569 (Point E), then continues southwestwards to Grid Reference 37810 45568 (Point P) and generally southeastwards to Grid Reference 37815 45556 (Point Q) and eastwards to Grid Reference 37818 45556 (Point R) all on grass for 170 metres approximately, and then generally southwards on a metalled surface for 17 metres approximately to a pedestrian gate at Grid Reference 37818 45555 (Point S), then continues generally southwestwards on a compacted stone track for 330 metres approximately to Grid Reference 37804 45526 (Point G); a total distance of 560 metres approximately.	2.5 metres
Public Footpath 05.43/30 shown on the attached map by a bold black broken line A--H--B	Starts at Grid Reference 37792 45592 (Point A) and proceeds southeastwards on tarmac for 90 metres approximately to Grid Reference 37795 45584 (Point H) and continues southwestwards on grass for 20 metres approximately to Grid Reference 37794 45582 (Point B), its junction with Footpath 05.43/32; a total distance of 110 metres approximately	Points A-H: 2.5 metres Points H-B: 2.0 metres
Public Footpath 05.43/30 shown on the attached map by a bold black broken line C--J--K--L--M--N--F	Starts at Grid Reference 37801 45575 (Point C) and proceeds northeastwards for 62 metres approximately to Grid Reference 37806 45578 (Point J), then continues southeastwards for 63 metres approximately to Grid Reference 37809 45573 (Point K), its junction with Footpath 05.43/26, then east-northeastwards for 90 metres approximately to Grid Reference 37818 45574 (Point L), then northwards for 40 metres approximately to Grid Reference 37818 45578 (Point M), then eastwards for 104 metres approximately to Grid Reference 37828 45578 (Point N) and generally southeastwards for 126 metres to Grid Reference 37835 45569 (Point F), all on a metalled surface; a total distance of 485 metres approximately.	2.5 metres

PART 3

LIMITATIONS AND CONDITIONS

<u>Position on Footpath 05.43/26 to which limitations and conditions apply</u>	<u>Limitations and Conditions</u>
OS Grid Reference 37818 45555 (Point S)	Pedestrian Gate to BS 5709: 2018 Also lay a level surface either side of the new gate, as required, to a minimum width of 2.5 metres with minimum 120 mm of crushed limestone aggregate, e.g. MoT Type 1

PART 4

MODIFICATION OF DEFINITIVE STATEMENT VARIATION OF PARTICULARS OF PATH OR WAY

Path No.	Grid Reference End Points	Description	Nature of Surface	Length (Km)	Width (m)	Lawful Obstructions and Conditions
Public Footpath 05.43/26	37808 45569 37809 45573 (Start) To 37806 45511 (Finish)	Commences at its junction with Path number 30 05.43/30 at Crow Trees, Grid Reference 37809 45573 ; and proceeds southeastwards on tarmac for 43 metres approximately to Grid Reference 37811 45569 , then continues southwestwards to Grid Reference 37810 45568 and generally southeastwards to Grid Reference 37815 45556 and eastwards to Grid Reference 37818 45556 all on grass for 170 metres approximately, and then generally southwards on a metalled surface for 17 metres approximately to a pedestrian gate at Grid Reference 37818 45555, then continues generally southwestwards on a compacted stone track for 330 metres approximately to Grid Reference 37804 45526; a total distance of 560 metres approximately, then continuing in a southerly direction via Stag-Laithe to the boundary with the Parish of Gisburn Forest.	Pasture	0.58	0.9	Pedestrian Gate to BS 5709: 2018 at OS GR 37818 45555
			Tarmac	0.043	2.5	
			Grass	0.170	2.5	
			Metalled	0.017	2.5	
			Stone Track	0.330	2.5	Field Gate
			Pasture	Total = 0.710	0.9	
Public Footpath 05.43/30	37783 45606 (Start) To 38036 45619 (Finish)	Commences at Dam Head from Path number 27 05.43/27 and proceeds generally south southeast to Grid Reference 37792 45592 and proceeds southeastwards on tarmac for 90 metres approximately to Grid Reference 37795 45584 and continues southwestwards on grass for 20 metres approximately to Grid Reference 37794 45582, its junction with Footpath 05.43/32 ; a total distance of 110 metres approximately and proceeds generally south southeast to Grid Reference 37801 45575 and proceeds northeastwards for 62 metres approximately via Crow Trees to Grid Reference 37806 45578 , then continues southeastwards for 63 metres approximately to Grid Reference 37809 45573, its junction with Footpath 05.43/26 , then east-northeastwards for 90 metres approximately to Grid Reference 37818 45574, then	Pasture	3.026	0.9	Field Gate, Rails
			Tarmac	0.090	2.5	Field Gate GR 37807 45569
			Grass	0.020	2.0	
			Metalled	0.485	2.5	

		<p>northwards for 40 metres approximately to Grid Reference 37818 45578, then eastwards for 104 metres approximately to Grid Reference 37828 45578 and generally southeastwards for 126 metres to Grid Reference 37835 45569, all on a metalled surface; a total distance of 485 metres approximately; then east via Moss Laithe and Loscober Laithe to the County Road at Pikeber.</p>	Pasture	Total = 3.125	0.9	<p>Field Gate GR 37888 45574 Stile GR 37974 45611 Stile GR 37995 45626 Field Gate</p>
--	--	---	---------	--------------------------	-----	--

**PUBLIC PATH DIVERSION AND
DEFINITIVE MAP AND STATEMENT MODIFICATION ORDER**

HIGHWAYS ACT 1980

WILDLIFE AND COUNTRYSIDE ACT 1981

THE NORTH YORKSHIRE COUNCIL

**PUBLIC FOOTPATHS 05.43/26 AND 05.43/30 BOWLAND FELL PARK CROWTREES
TOSSIDE, WIGGLESWORTH DIVERSION ORDER 2025**

THE NORTH YORKSHIRE COUNCIL in exercise of the powers conferred upon it in that behalf hereby confirm the foregoing Order (without any modification) as an Unopposed Order.

IN WITNESS whereof
THE COMMON SEAL of THE
NORTH YORKSHIRE COUNCIL

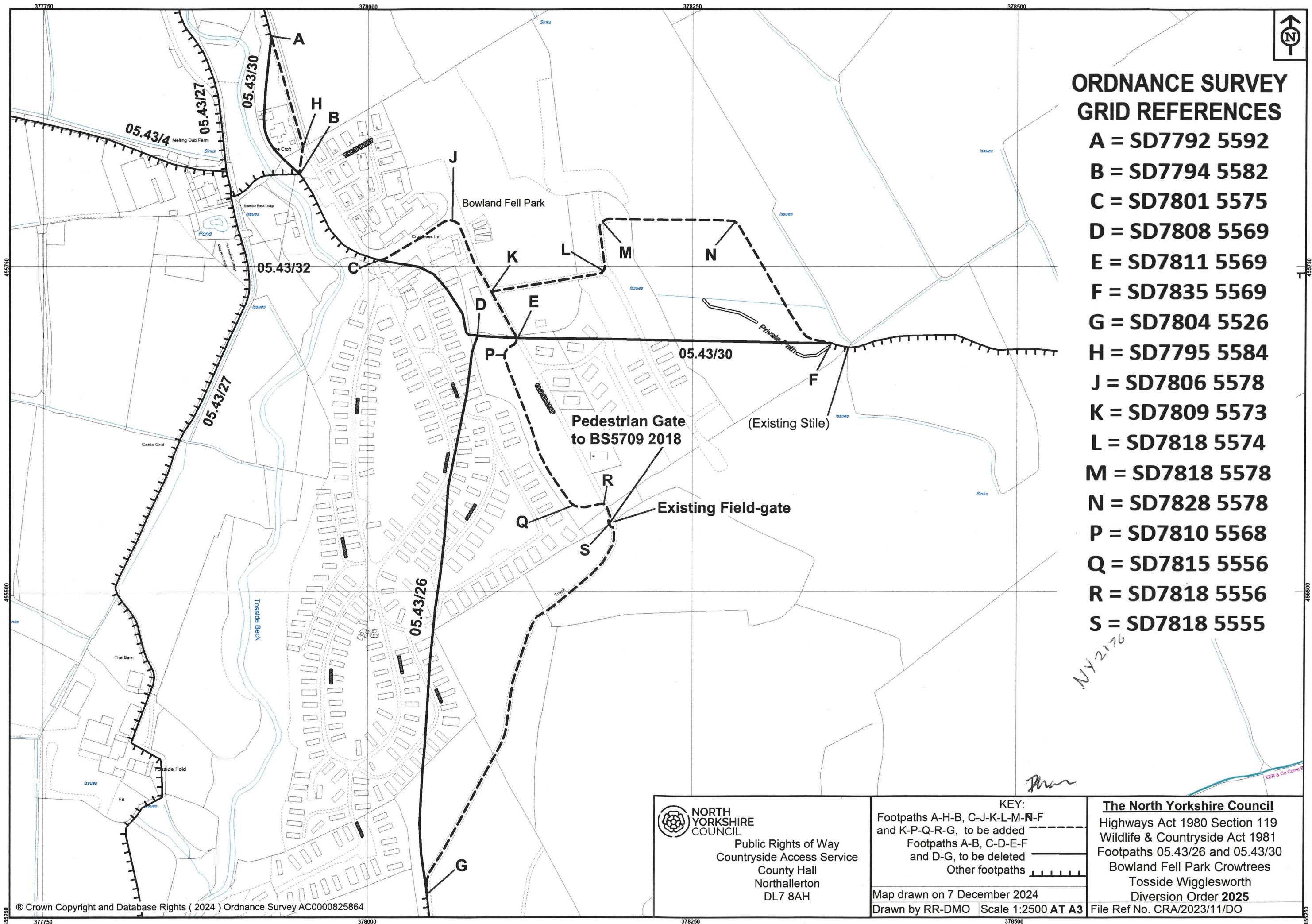
was hereunto affixed this 20th

day of MAY, 2025.

in the presence of:-







ORDNANCE SURVEY GRID REFERENCES

A = SD7792 5592

B = SD7794 5582

C = SD7801 5575

D = SD7808 5569

E = SD7811 5569

F = SD7835 5569

G = SD7804 5526

H = SD7795 5584

J = SD7806 5578

K = SD7809 5573

L = SD7818 5574

M = SD7818 5578

N = SD7828 5578

P = SD7810 5568

Q = SD7815 5556

R = SD7818 5556

S = SD7818 5555

NY 2176

Phan



**NORTH
YORKSHIRE
COUNCIL**

Public Rights of Way
Countryside Access Service
County Hall
Northallerton
DL7 8AH

KEY:

Footpaths A-H-B, C-J-K-L-M-N-F
and K-P-Q-R-G, to be added
Footpaths A-B, C-D-E-F
and D-G, to be deleted
Other footpaths

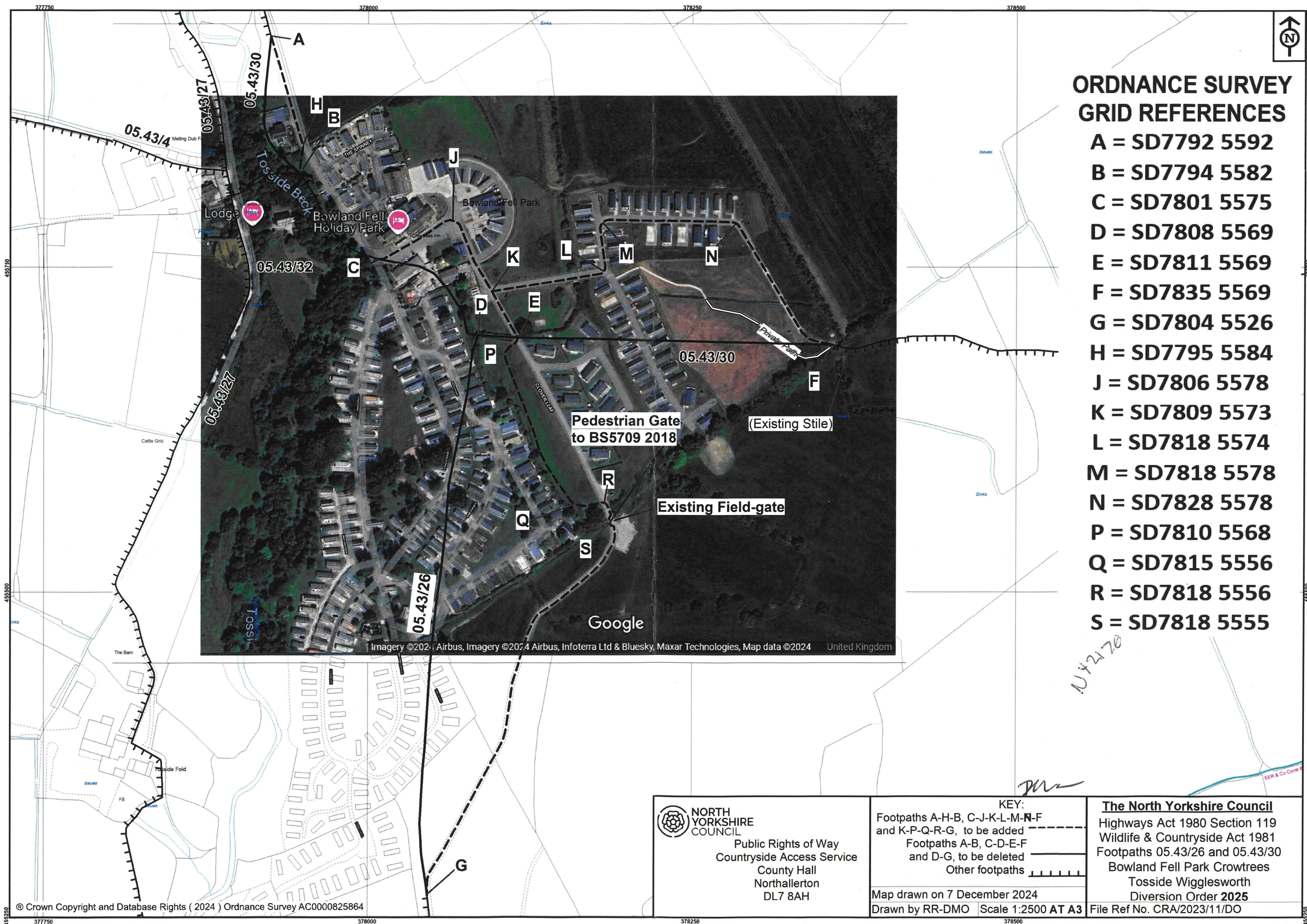
Map drawn on 7 December 2024

Drawn by RR-DMO Scale 1:2500 AT A3

The North Yorkshire Council

Highways Act 1980 Section 119
Wildlife & Countryside Act 1981
Footpaths 05.43/26 and 05.43/30
Bowland Fell Park Crowtrees
Tossie Wigglesworth
Diversion Order 2025

File Ref No. CRA/2023/11/DO



ORDNANCE SURVEY GRID REFERENCES

- A = SD7792 5592
- B = SD7794 5582
- C = SD7801 5575
- D = SD7808 5569
- E = SD7811 5569
- F = SD7835 5569
- G = SD7804 5526
- H = SD7795 5584
- J = SD7806 5578
- K = SD7809 5573
- L = SD7818 5574
- M = SD7818 5578
- N = SD7828 5578
- P = SD7810 5568
- Q = SD7815 5556
- R = SD7818 5556
- S = SD7818 5555

NY2470

MR

 NORTH YORKSHIRE COUNCIL Public Rights of Way Countryside Access Service County Hall Northallerton DL7 8AH	KEY: Footpaths A-H-B, C-J-K-L-M-N-F and K-P-Q-R-G, to be added ----- Footpaths A-B, C-D-E-F and D-G, to be deleted _____ Other footpaths	The North Yorkshire Council Highways Act 1980 Section 119 Wildlife & Countryside Act 1981 Footpaths 05.43/26 and 05.43/30 Bowland Fell Park Crowtrees Tosside Wigglesworth Diversion Order 2025 File Ref No. CRA/2023/11/DO
	Map drawn on 7 December 2024	
	Drawn by RR-DMO Scale 1:2500 AT A3	