

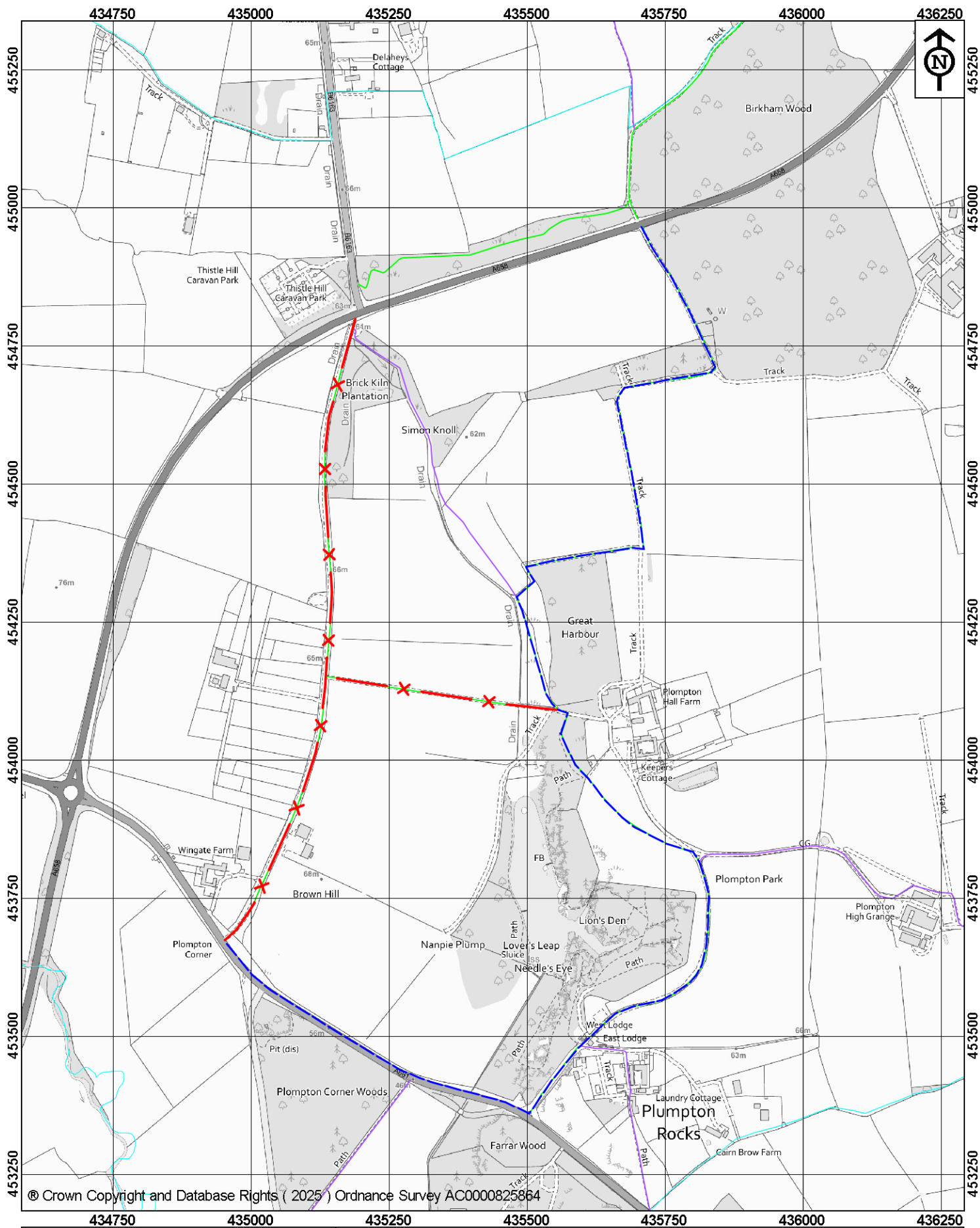
NORTH YORKSHIRE COUNCIL
(TEMPORARY PROHIBITION OF PEDESTRIANS,
CYCLISTS AND HORSE TRAFFIC)
PUBLIC BRIDLEWAY 15.109/9/2 & 15.109/8/1,
PLOMPTON
ORDER 2025 NO 305
Road Traffic Regulation Act 1984 – Section 14(1) (as
amended)

North Yorkshire Council intends to make this Order to prohibit any pedestrian, cyclist or person riding or leading a horse from using Public Bridleways 15.109/9/2 & 15.109/8/1 in the Parish of Plompton, between grid reference SE35185479, SE35555409 & SE34955367 for a temporary period of up to six months (subject to access to premises) between 10th September 2025 and 9th February 2026 due to filming on the route with potential danger to the public.

The closure period will apply as indicated by the placing of traffic signs and a local alternative route will also be signed on site where appropriate.

All enquiries to: **Aaron Sutter** @
aaron.sutter@itv.com

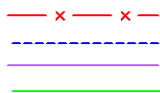
Further details can be viewed at:
<https://www.northyorks.gov.uk/rights-way-public-notices>



**NORTH
YORKSHIRE
COUNCIL**

Public Rights of Way
Countryside Access Service
County Hall
Northallerton
DL7 8AH

Key:
Closed route
Alternative route
Public Footpath
Public Bridleway



Map drawn on 1 August 2025

Drawn by DS

Scale 1:9000

The North Yorkshire Council

Temporary closure of
Public Bridleway 15.109/9/2 &
15.109/8/1 in Plompton

File Ref No. 72/15.109/9/2/01.08.25