

Selby Station Gateway- Phase 1

Transforming Cities Fund

Delivered in
partnership by:

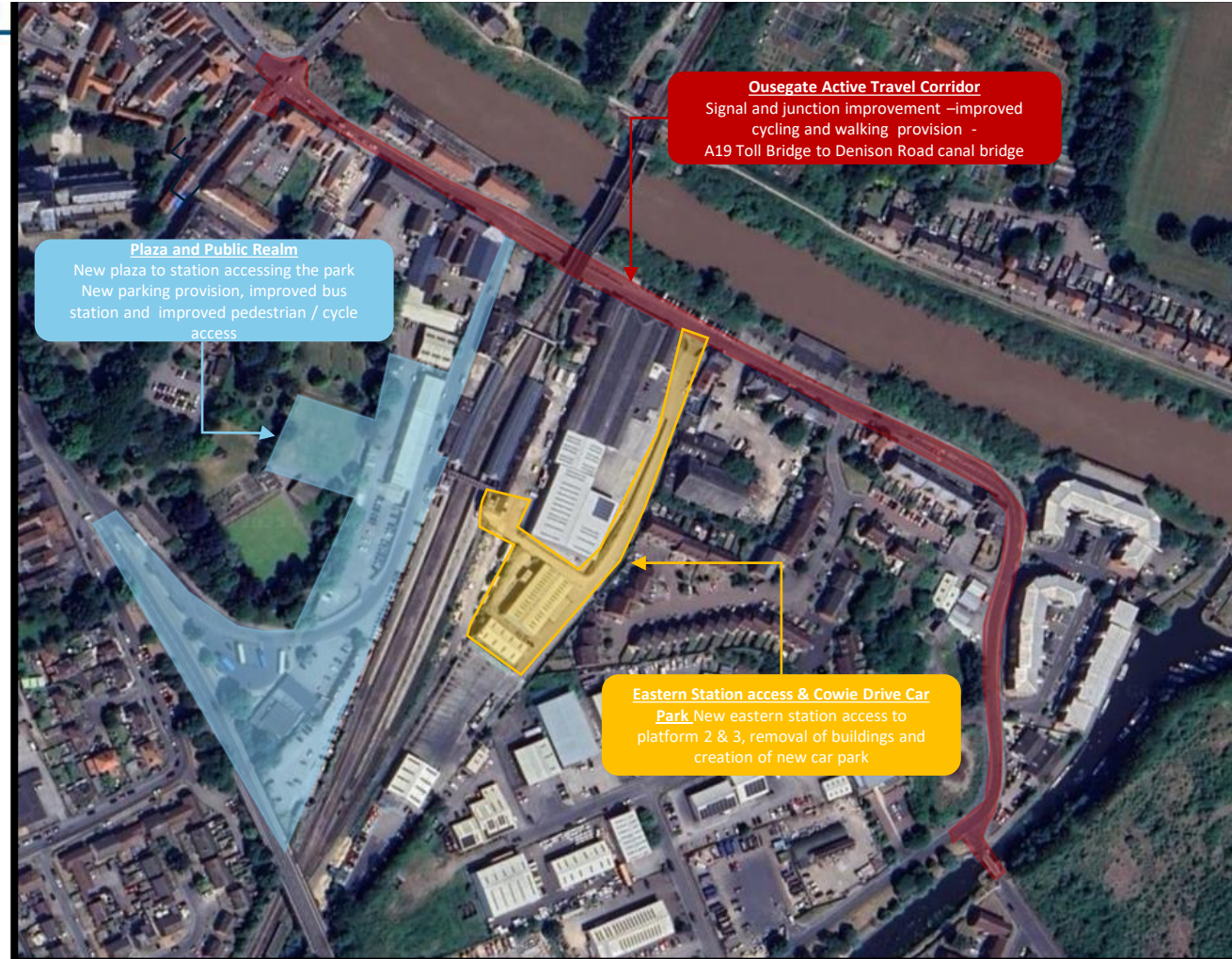


Funded by:



Selby Station Gateway– Transforming Cities Fund

Commencing in October 2025 - A circa £29m investment for Selby placing the Rail Station at the heart of future sustainable growth and prosperity - linking housing and employment development through cycling and walking routes to the town centre and communities.



Delivered in
partnership by:



Funded by:



HM Government



DAVID
SKAITH
MAYOR

Proposals

Circa £29million of investment in Selby –

Delivered in
partnership by:



Funded by:



HM Government



YORK
& NORTH
YORKSHIRE
COMBINED AUTHORITY

DAVID
SKAITH
MAYOR

- Acquisition of Selby Business Park and associated change of land use to expansive public realm gateway.
- Station Road reconfiguration and resurfacing to provide improved environment for pedestrians and cyclists. Reduced vehicle dominance.
- Cycle/Pedestrian link through Selby Park – with a wider masterplan in development.
- Bus Station passenger environment improvements.
- Acquisition of industrial unit and change of land use to surface car park.
- Surface improvements on Cowie Drive and new link onto Platform 2&3.
- Improved public realm and cycle infrastructure on Ousegate.
- Closure of Denison Road canal bridge to motor vehicles.



Project Objectives

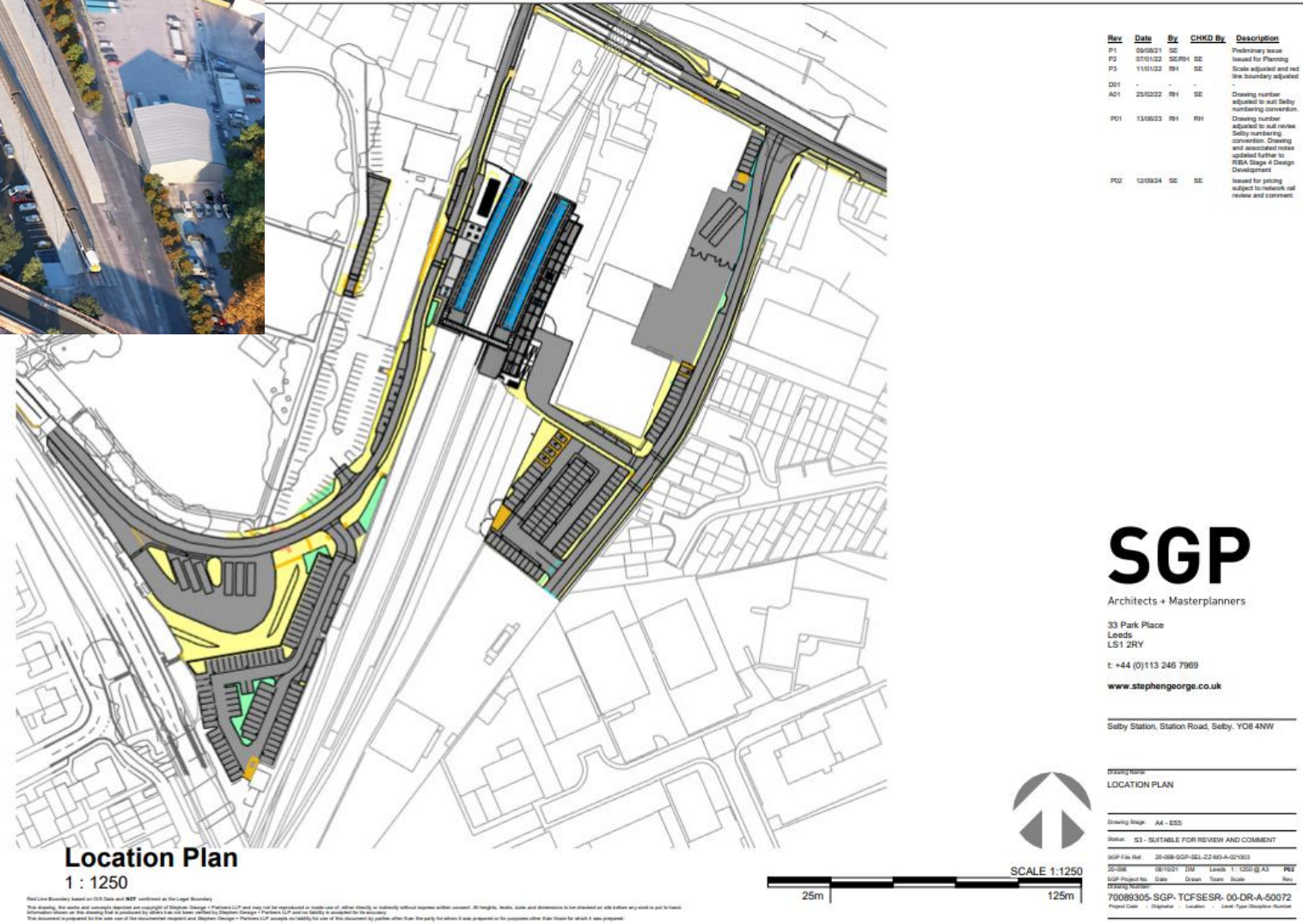
Increase and improve sustainable access to jobs and education for the people of Selby through:

- Creating a high quality, safe and welcoming environment surrounding Selby station
- Improved access and links to the station for residents and visitors - pedestrians, cyclists, buses and motor vehicles.
- Removal of redundant buildings and infrastructure to encourage new investment
- Improving air quality and supporting more sustainable and healthy travel options



• Station Road area

- New Station Plaza
- Improvements to Station Road
- Improved bus terminal

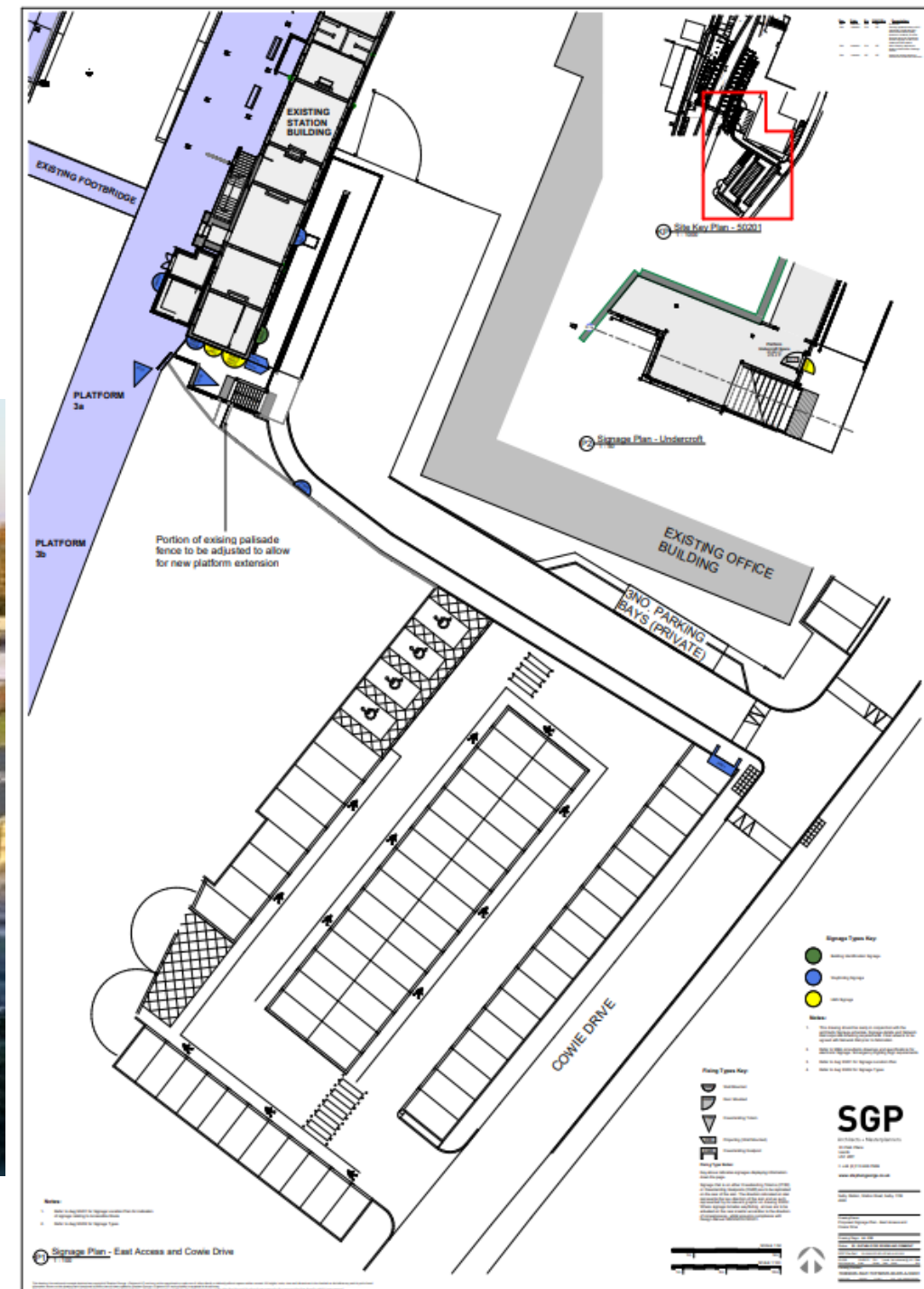


Cowie Drive

- New parking provision including EV charging
- Ramped access to rear of station and Platform 2&3



OFFICIAL



Outcomes

- Improved connectivity across Selby, including direct links between the town centre, bus and rail station.
- Increased access to services, employment and education opportunities within the local area and across the wider region.
- Modal shift from private vehicles to sustainable modes, reducing vehicle dominance.
- Improved safety and reduced road traffic accidents.
- Improved links between the town centre and key employment sites, amenities/services, educational facilities etc.
- Reduced pollutants (GHG and particulates) associated with vehicle traffic.
- Improved pedestrian and cyclist experience.



Selby Station Gateway Project Artist Impression

Current Programme

(May be subject to amendments)

Contract Award	Quarter 3 2025	Complete
Mobilisation & Early Works	October 2025	Quarter 1 2026
Social Club Demolition	Quarter 4 2025	Quarter 3 2026
James William House Demolition	Quarter 4 2025	Quarter 1 2026
Business Park Demolition and Clearence	Quarter 1 2026	Quarter 3 2026
Works to Cowie Drive Car Park	Quarter 1 2026	Quarter 4 2026
East Station Access Works	Quarter 2 2026	Quarter 4 2026
Cross Station cabling works	Quarter 2 2026	Quarter 3 2026
Station Road Car Park, Bus Terminus & Bawtry Road Steps	Quarter 4 2026	Quarter 4 2027
Shipyards Road / Denison Road	Quarter 4 2026	Quarter 4 2026
Ousegate	Quarter 4 2026	Quarter 3 2028
Station Road Works	Quarter 2 2027	Quarter 1 2028
Bawtry A19 / Ousegate junction	Quarter 4 2028	Quarter 4 2028
Completion	Quarter 4 2028	