

# North Yorkshire and York Local Nature Recovery Strategy (LNRS)

Guidance Note: Interpretation of LNRS Local Habitat Map  
in relation to Biodiversity Net Gain (BNG)

February 2026

A large, abstract graphic consisting of several overlapping circular arcs in light beige, light green, and light blue, creating a sense of movement and depth.

## Contents

1.	Introduction	1
2.	General Principles	4
3.	Changing the Local Habitat Map basemap	8
4.	Worked example 1	9
5.	Worked example 2	14
6.	Worked example 3	18
7.	Worked example 4	22
8.	Worked example 5	27

## 1. Introduction

Local Nature Recovery Strategies (LNRS) are a new system of spatial strategies intended to drive nature recovery, along with associated environmental improvements. Their main purpose is to identify appropriate actions and suitable locations to enhance existing habitats, or create new habitats, where this is most likely to provide the greatest benefits for nature and the wider environment.

The Local Habitat Map is one of the two statutory outputs of the Local Nature Recovery Strategy (LNRS) for North Yorkshire and York. It is an interactive online web map that provides a spatial vision for this first iteration of the LNRS with the ambition to create a comprehensive and connected nature network across North Yorkshire and York.

### **The LNRS Local Habitat Map and Biodiversity Net Gain (BNG)**

The LNRS Local Habitat Map has a direct linkage with Biodiversity Net Gain (BNG) in supporting a strategic approach to BNG delivery. BNG is designed to ensure that development has a measurably positive impact (or 'net gain') on biodiversity, when compared to what was on a site before the development took place. It has been mandatory since February 2024 under the Town and Country Planning Act 1990, with developments being required to deliver a minimum 10% net gain in biodiversity when compared with the pre-development level.

The LNRS Local Habitat Map plays a role in BNG by determining the 'strategic significance' multiplier within the biodiversity metric. Sites identified as falling within the shaded area of the 'Mapped Measures' layer in the Local Habitat Map have potential for a 15% 'strategic significance' uplift in post-development BNG calculations. For the 15% uplift to apply, the habitat intervention being proposed under BNG must be consistent with at least one of the mapped measures that are proposed for that location in the LNRS Local Habitat Map.

### **The Statutory Biodiversity Metric User Guide**

The Statutory Biodiversity Metric User Guide<sup>1</sup> sets out how strategic significance should be assigned in areas where a Local Nature Recovery Strategy (LNRS) has been published (see the section of that document titled 'Strategic significance', P.27).

Table 7 of the User Guide sets out the strategic significance categories applied to post-development interventions where a LNRS has been published. Table 7 is reproduced overleaf, for reference.

### **Baseline strategic significance value**

In accordance with the Statutory Biodiversity Metric User Guide, once an LNRS has been published, the baseline strategic significance values for habitat parcels in that area should always be scored as low. Where an LNRS has been published, the strategic significance uplift only applies to post-development habitat interventions.

---

<sup>1</sup> The Statutory Biodiversity Metric, User Guide – Defra  
[https://assets.publishing.service.gov.uk/media/689c5ee17b2e384441636196/The\\_Statutory\\_Biodiversity\\_Metric\\_-\\_User\\_Guide\\_-\\_July\\_2025.pdf](https://assets.publishing.service.gov.uk/media/689c5ee17b2e384441636196/The_Statutory_Biodiversity_Metric_-_User_Guide_-_July_2025.pdf)

## **Transitional Arrangements**

There are transitional arrangements in place for planning applications that were submitted before the LNRS was published, but had not yet been determined on the date the LNRS was published. The transitional arrangements also apply to planning applications where the LNRS was published after the granting of planning permission, but before the discharge of the pre-commencement statutory Biodiversity Net Gain condition. Post-development BNG calculations may need to be updated in respect of the strategic significance multiplier, once the LNRS has been published.

Further guidance on the transitional arrangements for such applications has been provided by the Planning Advisory Service (PAS).<sup>2</sup> It is strongly recommended that applicants whose planning application falls into one of the above categories consult this additional guidance.

---

<sup>2</sup> LNRS & Strategic Significance Multiplier Transition – PAS <https://www2.local.gov.uk/pas/environment/biodiversity-net-gain-bng-local-planning-authorities/bng-library/lhrs-strategic>

**Table 7 Strategic significance categories applied to post-development interventions where a LNRS has been published.**

Category	Score	Description
<b>High</b> (Formally identified in local strategy)	1.15	<p>This category can only be applied to post development interventions when:</p> <ul style="list-style-type: none"> <li>the location of the habitat parcel has been mapped in the Local Habitat Map<sup>4</sup> as an area where a potential measure has been proposed to help deliver the priorities of that LNRS; and</li> <li>the proposed intervention is consistent<sup>5</sup> with the mapped potential measure in the LNRS for the habitat parcel</li> </ul> <p>You should record that you have applied the published LNRS in your gain plan.</p>
<b>Medium</b> (Location ecologically desirable but not in local strategy)	1.10	This category cannot be applied.
<b>Low</b> (Area / compensation not in local strategy)	1	<p>Where the definitions for high strategic significance are not met.</p> <p>Even if your project is in an area mapped with a potential measure, if the proposed intervention is not consistent with a potential measure proposed by the LNRS for that location, you should record strategic significance as low.</p>

**Note:** Table 7 reproduced from The Statutory Biodiversity Metric User Guide, 3 July 2025 update. Please check for latest version.

<sup>4</sup> Where the habitat parcel has been mapped with corresponding potential measures in the LNRS

<sup>5</sup> Where developments negatively impact areas that are of particular importance for biodiversity, mapped in the LNRS Local Habitat Maps (such as Local Wildlife Sites), interventions are highly unlikely to be consistent with the potential measures proposed

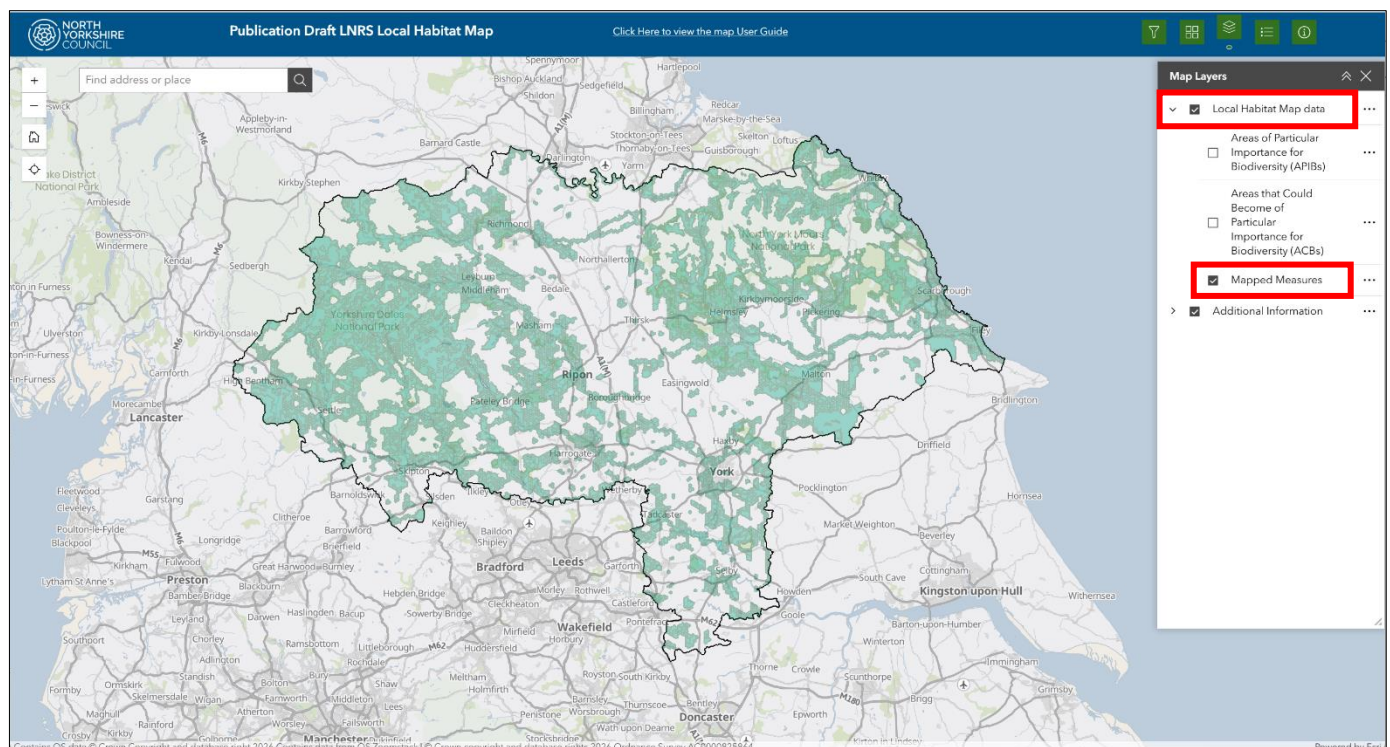
## 2. General Principles

To help in assessing whether a proposed post-development BNG habitat intervention is eligible for the 15% strategic significance multiplier, we have set out the two general principles below. BNG sites should be considered against **both** general principles to determine whether the 15% strategic significance multiplier applies to the post-development metric calculations.

There are a number of ‘worked examples’ in the following sections of this document, which help to explain how these principles should be applied in practice.

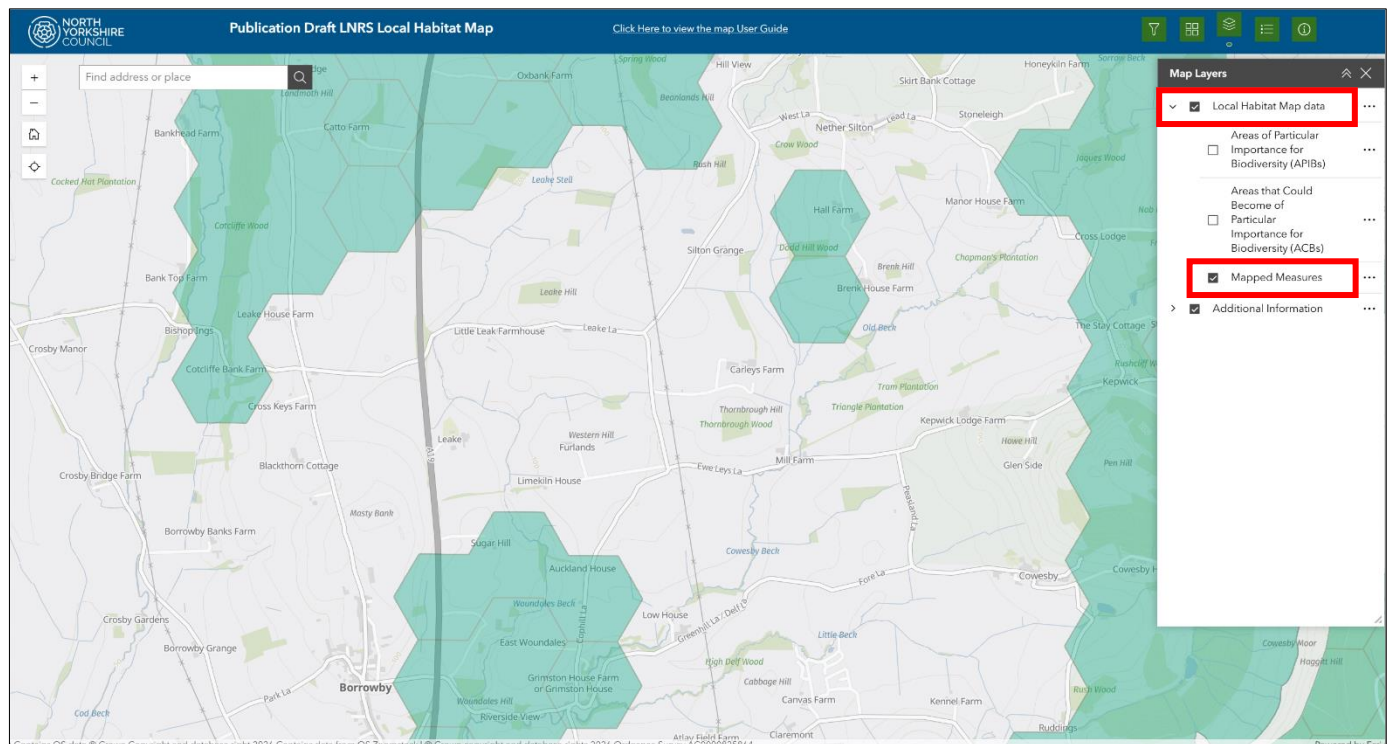
**Principle 1: Habitat parcels that are within the shaded hexagons in the LNRS Mapped Measures layer are considered to have the potential to be strategically significant for Biodiversity Net Gain (BNG)**

The relevant LNRS Local Habitat Map layer for determining strategic significance for BNG is the ‘Mapped Measures’ layer. It is one of the three statutory layers of the Local Habitat Map and is contained under the ‘Local Habitat Map data’ layer folder, outlined red in the screenshot below.





The Mapped Measures layer is shown in turquoise shading in the Local Habitat Map and is based on regular hexagons, each with an area of 20ha. The boundaries of each individual hexagon that make up the Mapped Measures layer are shown in light grey, as shown in the screenshot below.



Any habitat parcel that is **entirely** within one or more shaded hexagons within the Mapped Measures layer will be considered to have the potential to be strategically significant.

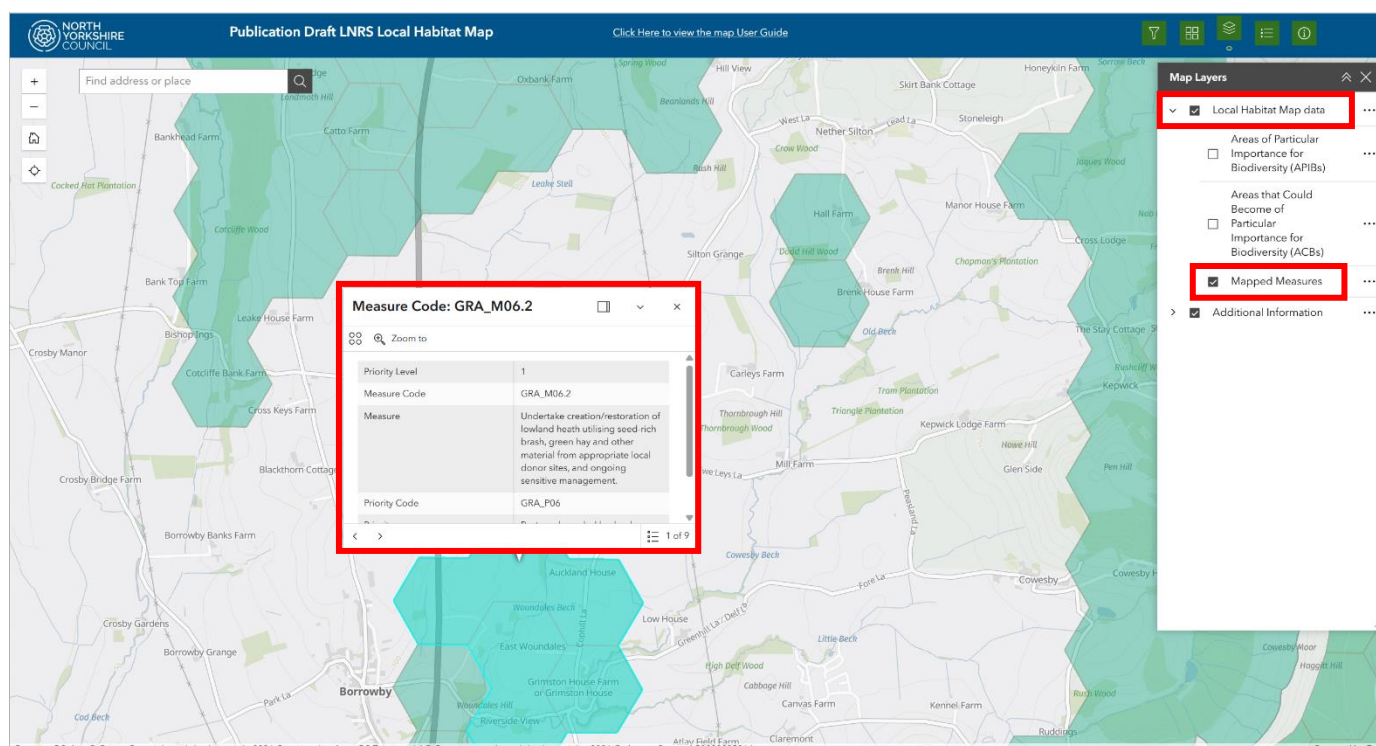
For any habitat parcel that is **partly** within one or more shaded hexagons within the Mapped Measures layer, the part of it that is **within** the shaded hexagon(s) of the Mapped Measures layer will be considered to have the potential to be strategically significant. Any part of a habitat parcel that is **outside** the shaded hexagons will **not** have the potential to be strategically significant. The hexagon(s) in the LNRS Mapped Measures layer that the habitat parcel is within (or overlaps with) are referred to as the 'relevant hexagon(s)'.

**NOTE:** In order for a habitat parcel (or part of it) to be considered to have the potential to be strategically significant, at least one part of the habitat parcel boundary must clearly overlap with at least one shaded hexagon in the LNRS Mapped Measures layer. Habitat parcels that are immediately adjacent to hexagons in the Mapped Measures layer, but do not overlap with them, will not be considered (see section 8 'Worked example 5').

**Principle 2:** Proposed habitat interventions under Biodiversity Net Gain (BNG) will be considered strategically significant if they meet the requirements of Principle 1, and are consistent with at least one of the mapped measures of the relevant hexagon(s) in the LNRS Mapped Measures layer

In order to be considered strategically significant, the habitat intervention(s) being proposed under BNG must be consistent with at least one of the mapped measures of the relevant hexagon(s) in the LNRS Mapped Measures layer. This means that the habitat intervention(s) being proposed under BNG must be considered capable of delivering the specific action that is described by the LNRS mapped measure, in the context of the broader LNRS priority that the mapped measure is designed to contribute towards.

The relevant mapped measures for any hexagon within the LNRS Mapped Measures layer can be viewed within the Local Habitat Map by clicking onto the relevant hexagon, as shown outlined red in the screenshot below.



**NOTE:** In order to be considered to be strategically significant, the habitat intervention(s) being proposed under BNG must be consistent with at least one of the mapped measures of the **relevant hexagon(s)** in the LNRS Mapped Measures layer. The relevant hexagon(s) are **only** those hexagons that clearly overlap with the habitat parcel boundary. Mapped measures from nearby hexagons that do not overlap the habitat parcel boundary will not be considered.

The LNRS contains both 'mapped' and 'unmapped' measures. Only habitat interventions that are consistent with LNRS **mapped** measures, as shown on the Local Habitat Map, will be eligible for the BNG strategic significance multiplier. Unmapped measures do not appear on the Local Habitat Map and are not eligible for strategic significance, as they do not have a spatial focus (they have not been identified as being particularly beneficial in specific locations).



### **Application of the general principles and establishing strategic significance**

Any habitat parcel that meets the requirements of **Principle 1** will be considered to have the **potential** to be strategically significant for Biodiversity Net Gain (BNG).

Any proposed habitat intervention(s) under BNG being carried out within a habitat parcel that meets the requirements of Principle 1, and that also meet the requirements of **Principle 2** (in respect of alignment with LNRS mapped measures), will be considered strategically significant.

The principles set out in this guidance apply equally to **area habitats, hedgerows, and watercourses**. For hedgerows and watercourses, strategic significance should be applied based on where the linear feature lies relative to the hexagons in the LNRS Mapped Measures layer and whether the proposed intervention aligns with the mapped measure(s) for the relevant hexagon.

The 15% strategic significance multiplier for BNG will only apply where the requirements of **both** Principle 1 **and** Principle 2 can be demonstrated to have been met.

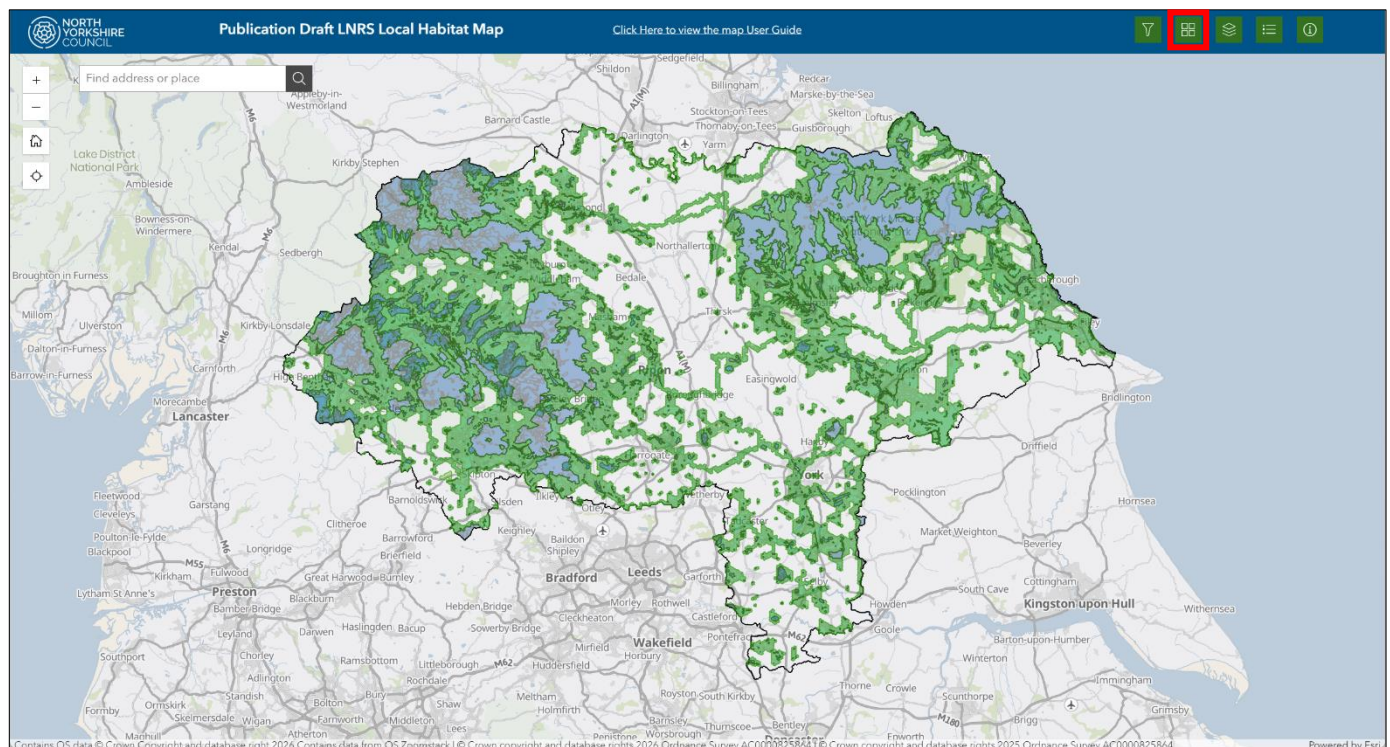
Where strategic significance has been applied, the unique measure codes of the LNRS mapped measure(s) that the proposed BNG habitat intervention(s) will deliver should be recorded in the 'User Comments' column of the 'Habitat Creation' and 'Habitat Enhancement' sections of the completed BNG metric.

There are a number of 'worked examples' from Section 4 onwards, which help to explain how these principles should be applied in practice and confirm whether strategic significance would, or would not, apply in each example (and why).

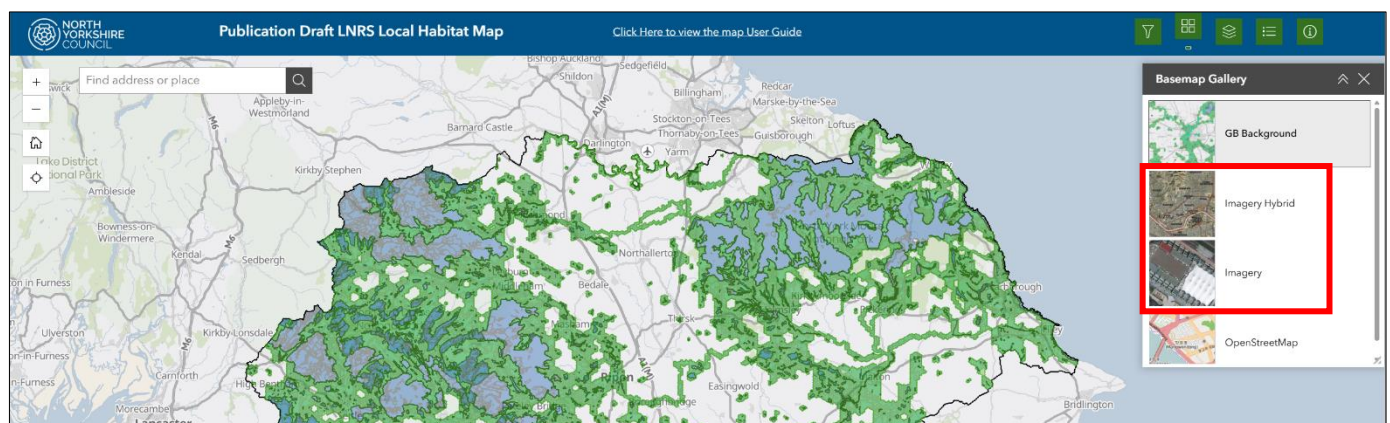
### 3. Changing the Local Habitat Map basemap

By default, the LNRS Local Habitat Map loads with the 'GB Background' map displayed as the basemap. In order to more easily assess individual field parcels (and proposed habitat parcels within them) it can be helpful to change the basemap to the 'Imagery' or 'Imagery hybrid' options, which display aerial imagery as the basemap. This makes it easier to identify individual field parcels within the Local Habitat Map.

To change the basemap, first click the 'Basemap Gallery' icon in the top right corner of the Local Habitat Map window (shown outlined red in the screenshot below).



Then select either 'Imagery' or 'Imagery hybrid' from the list of options (shown outlined red in the screenshot below). This will change the basemap accordingly.



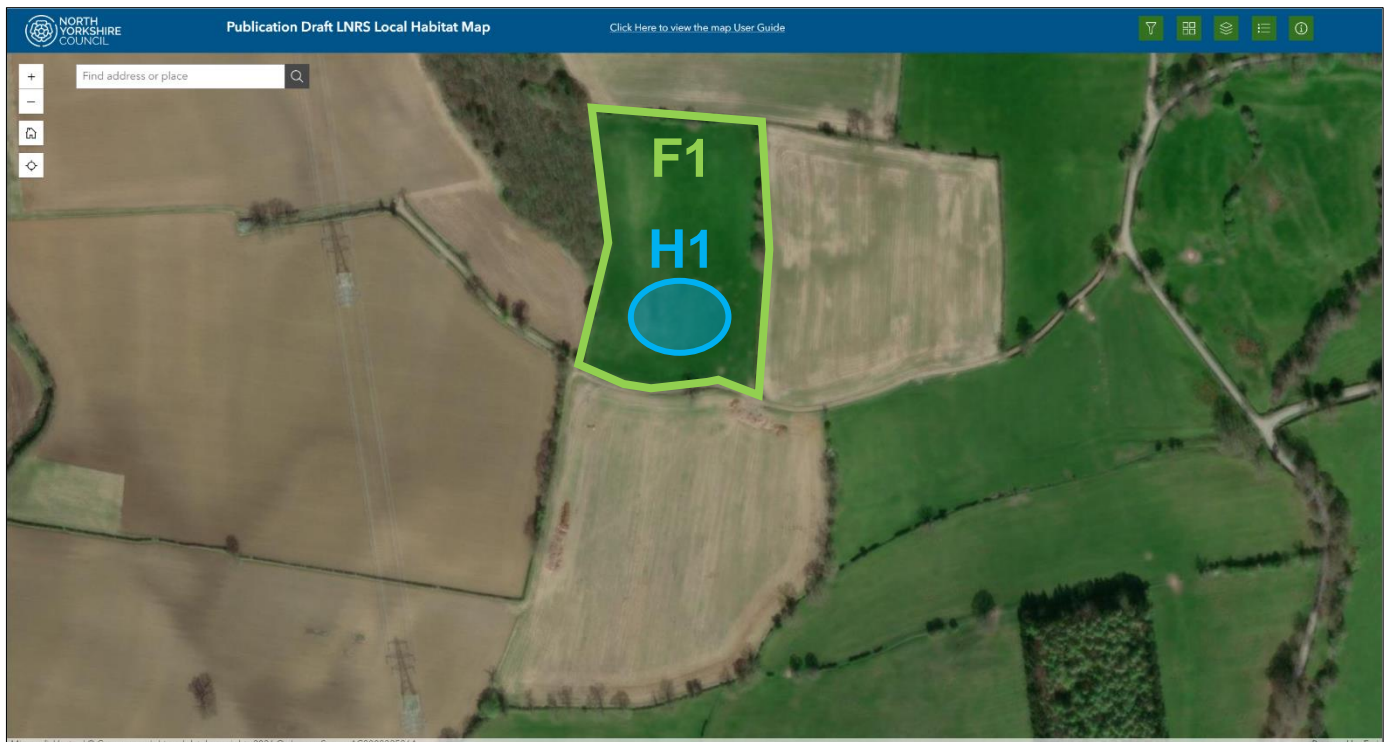
**NOTE:** The 'Imagery' and 'Imagery hybrid' basemaps take longer to load, so we suggest finding your approximate desired location within the map first, before changing the basemap.



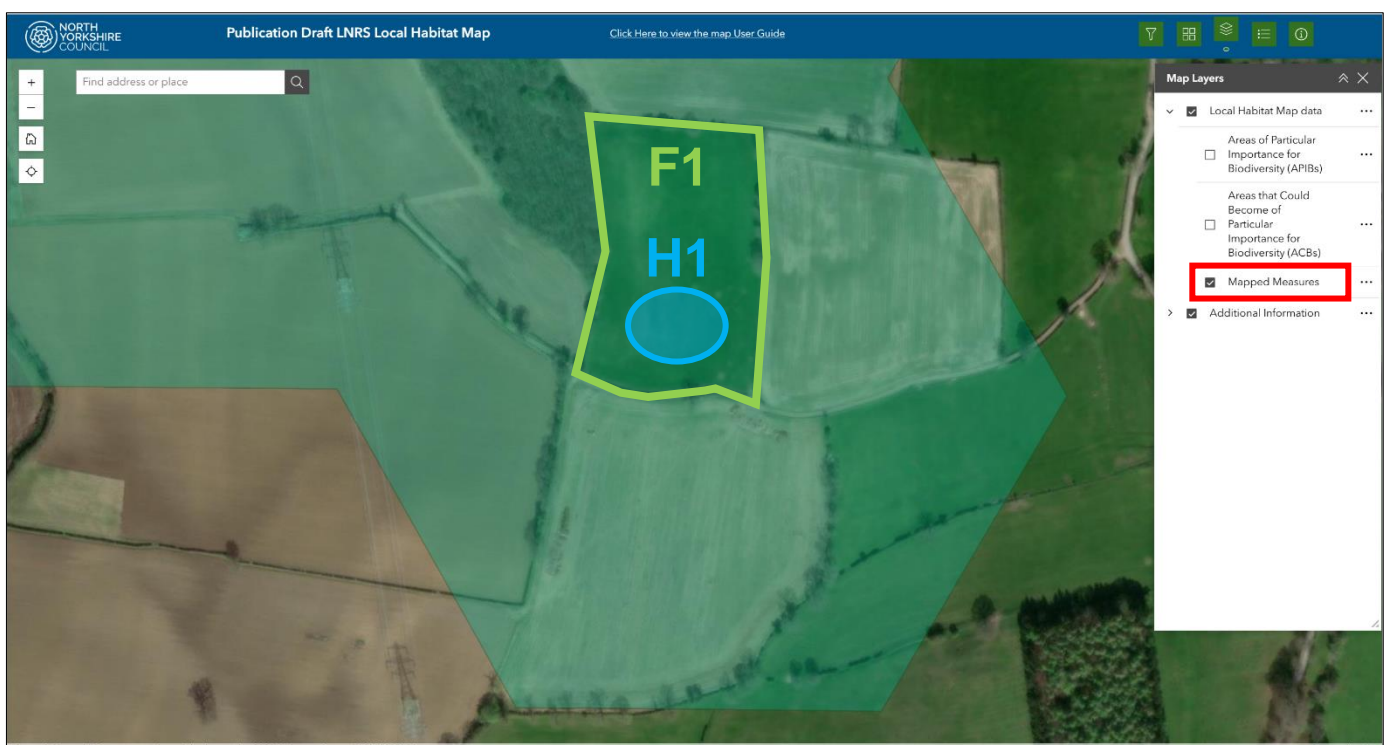
## 4. Worked example 1

**One habitat parcel with one relevant hexagon. Strategic significance applies.**

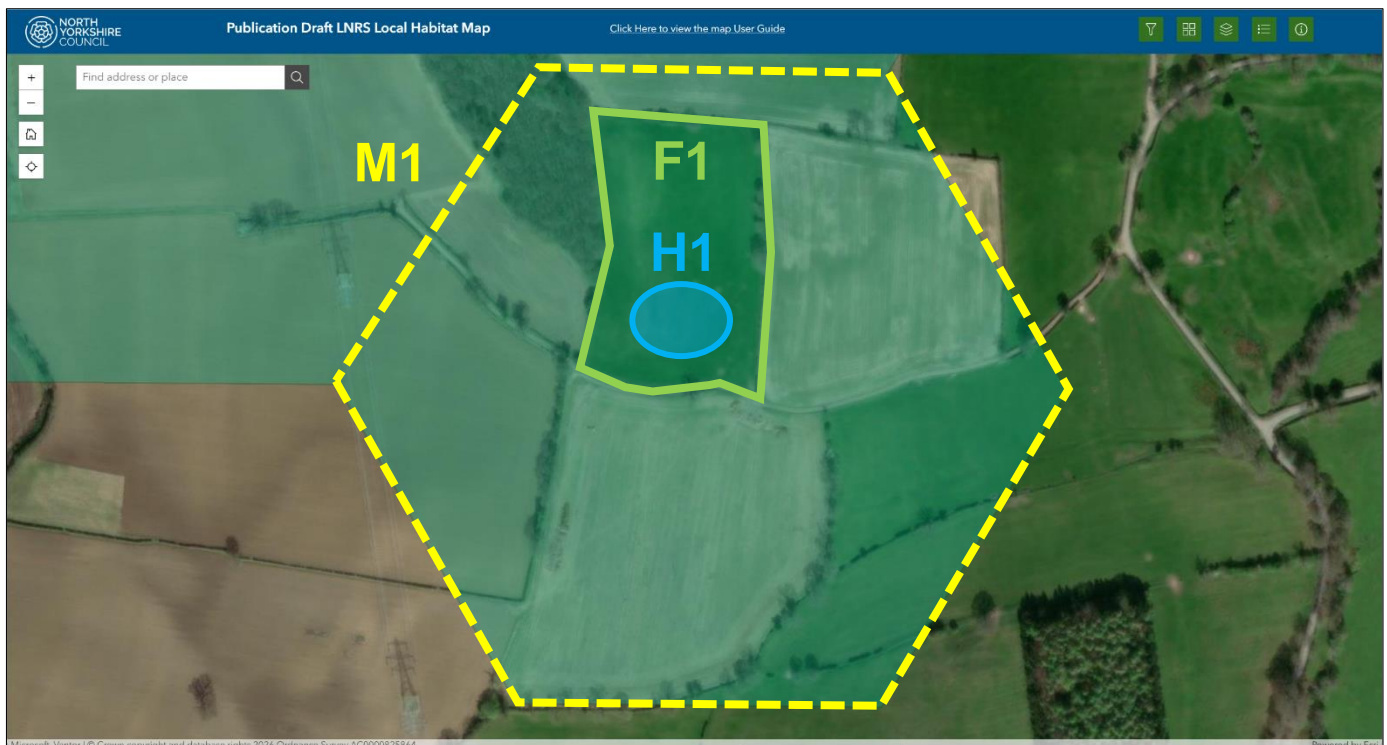
In the example below, habitat parcel H1 within field parcel F1 is being assessed in the LNRS Local Habitat Map to determine whether the BNG strategic significance multiplier applies. Habitat parcel H1 is shown edged blue and field parcel F1 is shown edged green in the screenshot below.



To assess strategic significance, the Mapped Measures layer is turned on, shown shaded turquoise and outlined in red in the screenshot below.



In this example, habitat parcel H1 is entirely within a shaded hexagon in the Mapped Measures layer. There is only one hexagon within the Mapped Measures layer that overlaps with the habitat parcel, shown with a dashed yellow outline and labelled 'M1' in the screenshot below. This is the only 'relevant hexagon'.



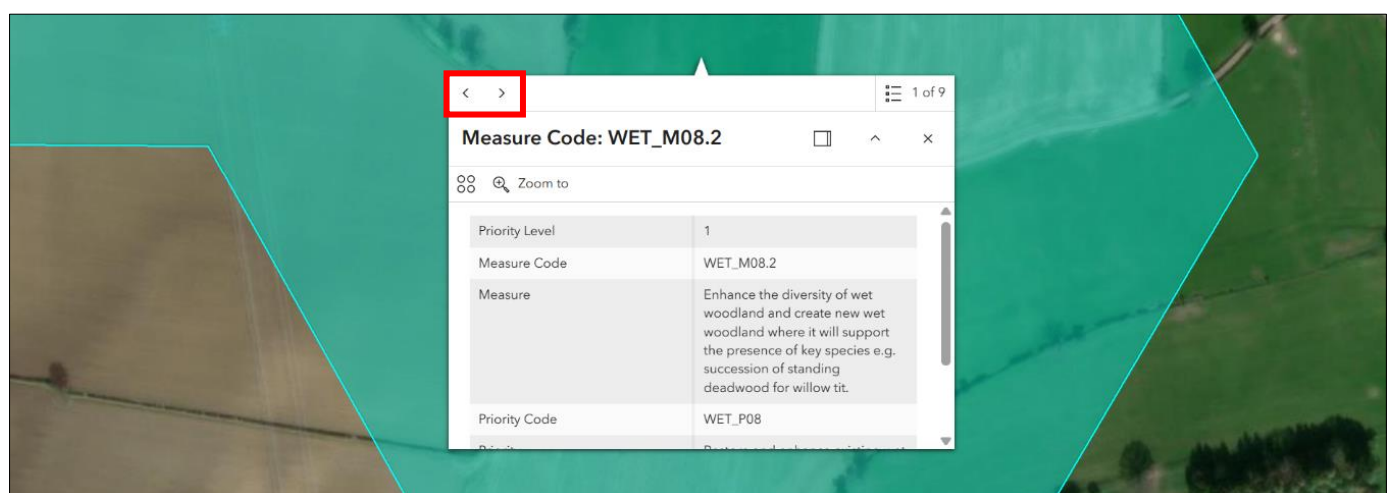
In accordance with **Principle 1**, as the whole of habitat parcel H1 is within hexagon M1 of the Mapped Measures layer, the whole of habitat parcel H1 is considered to have the potential to be strategically significant.

## Considering the relevant LNRS Mapped Measures

In accordance with **Principle 2**, in order for the strategic significance multiplier to apply, the habitat intervention being delivered in habitat parcel H1 must be consistent with the mapped measures of the relevant hexagon (M1). Clicking on the relevant hexagon within the Mapped Measures layer will open a pop-up window displaying the mapped measures for that particular hexagon (shown outlined red in the screenshot below).

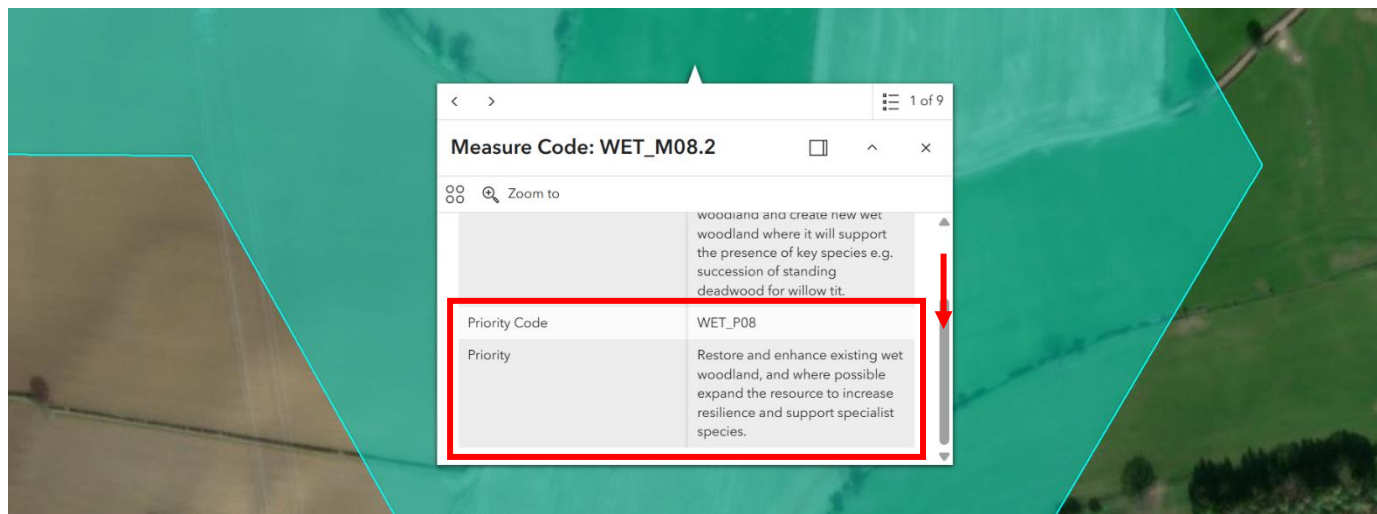


The '1 of 9' feedback in the corner of the mapped measures pop-up window indicates that there are 9 mapped measures for the relevant hexagon (M1). You can navigate between the different mapped measures by clicking the 'left' and 'right' arrow buttons in the corner of the pop-up window, shown outlined red in the screenshot below.





Scrolling down within the mapped measures pop-up window will provide the unique Priority Code and the priority description for the LNRS priority that the mapped measure relates to (shown outlined red in the screenshot below). This provides some wider context of the broader priority that the mapped measure is intended to help deliver.



In order for the strategic significance multiplier to apply, the habitat intervention being delivered must be consistent with at least one of the mapped measures of the relevant hexagon (M1). The strategic significance multiplier can only be applied once to any BNG habitat parcel, even if the habitat enhancement is consistent with more than one of the LNRS mapped measures.

An overview of the relevant mapped measures for this example is provided in the table below:

*Table 1: Mapped measures of the relevant hexagon (M1)*

Measure Code	Measure Summary	Priority Code	Priority Summary
WET_M07.2	Implement sensitive bank management	WET_P07	Expand the amount of riparian woodland
WET_M07.4	Create new riparian woodland	WET_P07	Expand the amount of riparian woodland
WET_M08.2	Enhance the diversity of wet woodland	WET_P08	Restore and enhance existing wet woodland
WLD_M02.3	Create and expand wood pasture	WLD_P02	Enhance and expand species-rich wood pasture, wood meadows and open mosaic habitats
WLD_M03.4	Increase woodland structure and species diversity within existing ancient woodlands	WLD_P03	Buffer, enhance, restore and better connect fragmented patches of Ancient Woodland
WLD_M04.1	Create new species-diverse woodlands	WLD_P04	Increase tree and woodland cover
WLD_M04.2	Ensure a diverse range of species are included in planting mixes	WLD_P04	Increase tree and woodland cover
WLD_M04.3	Include native ground flora in woodland creation	WLD_P04	Increase tree and woodland cover
WLD_M04.4	Enhance, restore, and/or reintroduce soil fungi	WLD_P04	Increase tree and woodland cover

### **Correct interpretation of LNRS mapping for BNG strategic significance multiplier**

Habitat parcel H1 has been assessed as being completely within a shaded hexagon in the LNRS Mapped Measures layer in the Local Habitat Map. It therefore meets the requirements of **Principle 1** and habitat parcel H1 is considered to have the potential to be strategically significant.

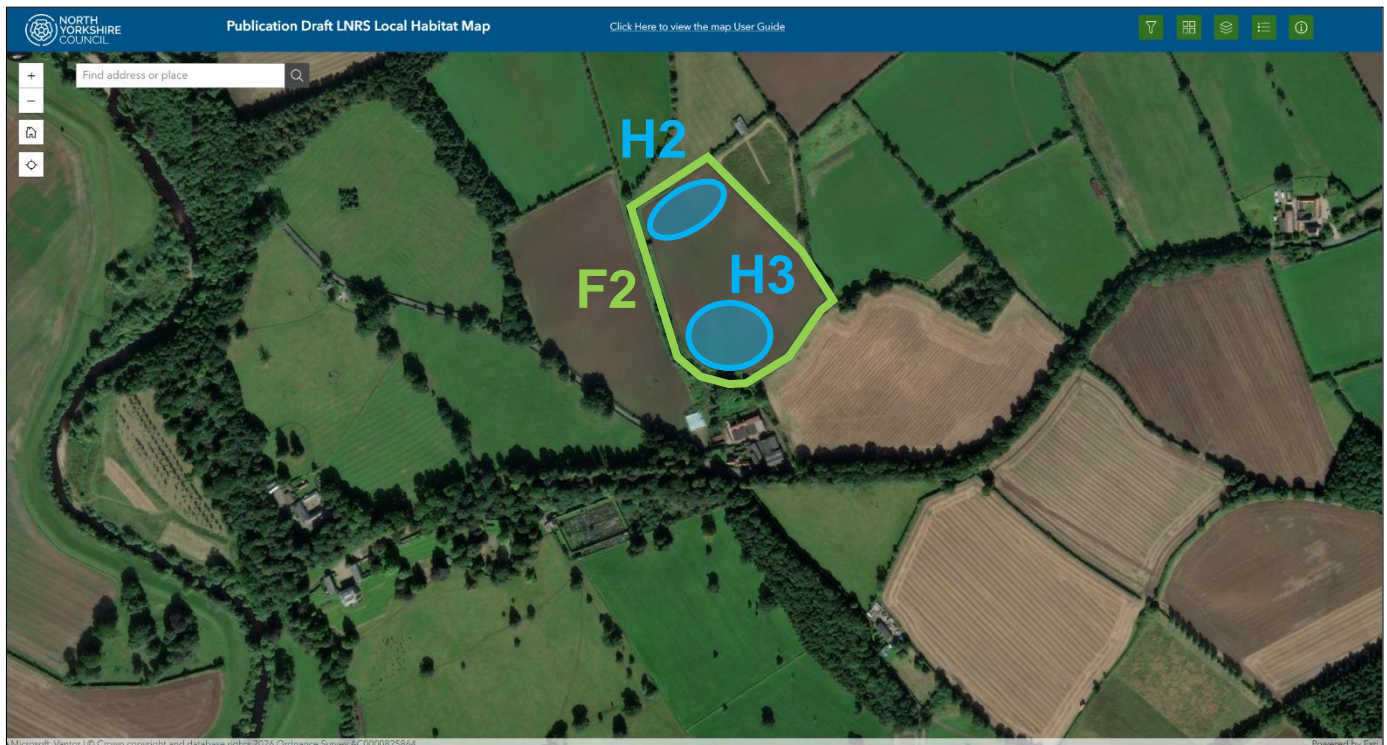
The proposed BNG habitat intervention for habitat parcel H1 has been assessed as being consistent with at least one of the 9 mapped measures of the relevant hexagon (M1) in the Mapped Measures layer (as listed in Table 1). The proposed habitat intervention therefore meets the requirements of **Principle 2**.

The proposed BNG habitat intervention for habitat parcel H1 is therefore considered strategically significant, as it meets the requirements of **both** Principle 1 **and** Principle 2, and the 15% strategic significance multiplier **applies**.

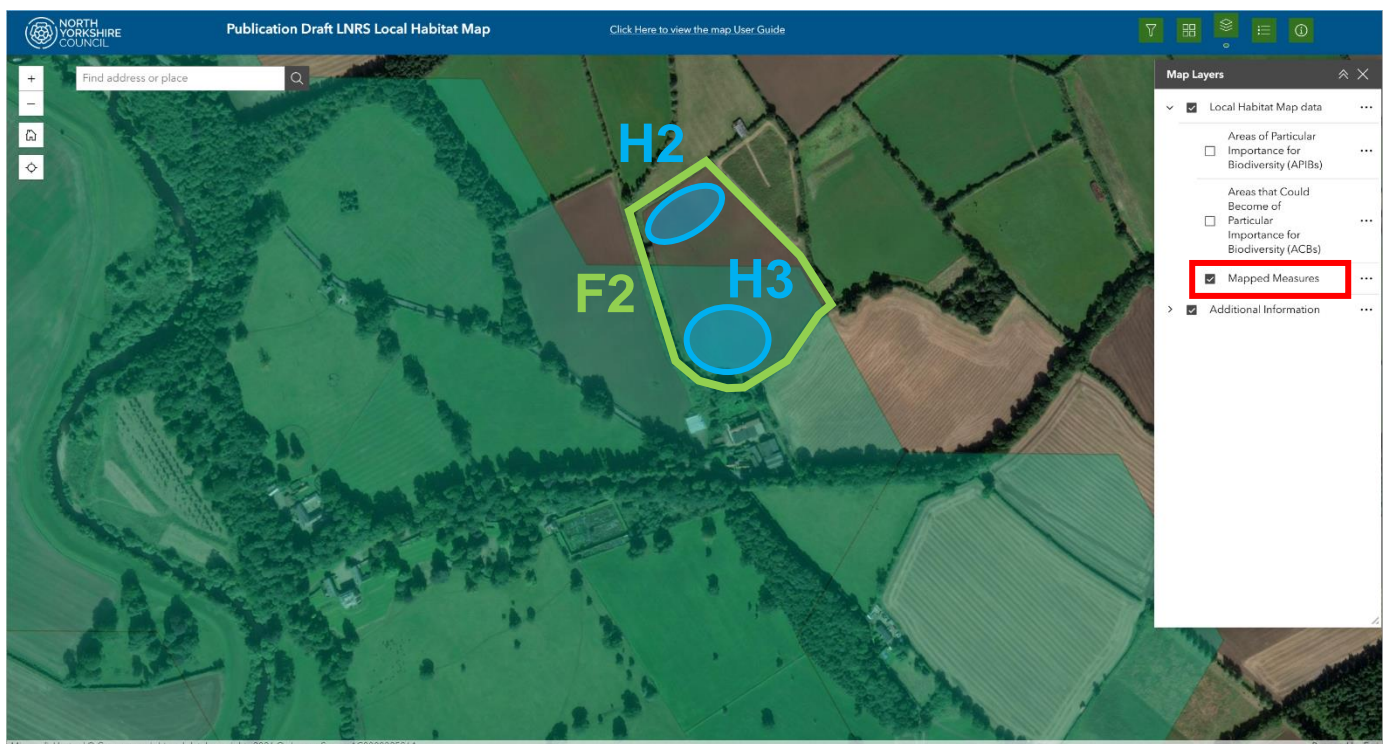
## 5. Worked example 2

**Two habitat parcels with one relevant hexagon. Strategic significance applies to one habitat parcel, but does not apply to the other habitat parcel.**

In the example below, habitat parcels H2 and H3 within field parcel F2 are being assessed in the LNRS Local Habitat Map to determine whether the BNG strategic significance multiplier applies. Habitat parcels H2 and H3 are shown edged blue and field parcel F2 is shown edged green in the screenshot below.

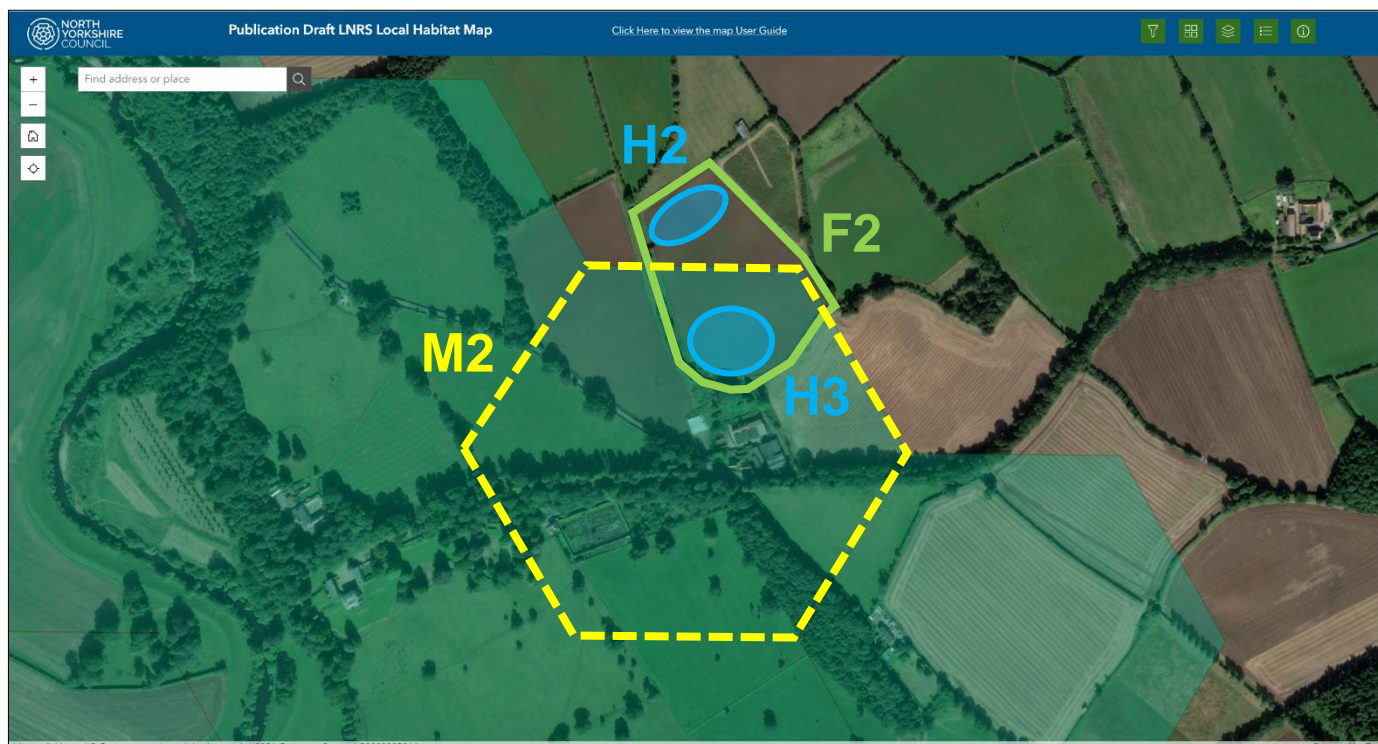


To assess strategic significance, the Mapped Measures layer is turned on, shown shaded turquoise and outlined in red in the screenshot below.





In this example, habitat parcel H3 is completely within a shaded hexagon in the Mapped Measures layer, but habitat parcel H2 is completely **outside** the shaded hexagons in the Mapped Measures layer. There is only one hexagon within the Mapped Measures layer that overlaps with habitat parcel H3, shown with a dashed yellow outline and labelled 'M2' in the screenshot below. This is the only 'relevant hexagon'.



In accordance with **Principle 1**, as the whole of habitat parcel H3 is within the Mapped Measures layer, the whole of habitat parcel H3 is considered to have the potential to be strategically significant. As the whole of habitat parcel H2 is **outside** the shaded hexagons in the Mapped Measures layer, habitat parcel H2 is considered **not** to have the potential to be strategically significant.

## Considering the relevant LNRS Mapped Measures

In accordance with **Principle 2**, in order for the strategic significance multiplier to apply to habitat parcel H3, the habitat intervention being delivered must be consistent with the mapped measures of the relevant hexagon (M2). Clicking on the relevant hexagon within the Mapped Measures layer will open a pop-up window displaying the mapped measures for that particular hexagon (shown outlined red in the screenshot below).



In order for the strategic significance multiplier to apply, the habitat intervention being delivered must be consistent with at least one of the mapped measures of the relevant hexagon (M2).



An overview of the relevant mapped measures for this example is provided in the table below:

*Table 2: Mapped measures of the relevant hexagon (M2)*

Measure Code	Measure Summary	Priority Code	Priority Summary
WET_M03.4	Buffer existing ponds	WET_P03	Restore, enhance, and expand pond networks
WET_M07.2	Implement sensitive bank management	WET_P07	Expand the amount of riparian woodland
WET_M07.4	Create new riparian woodland	WET_P07	Expand the amount of riparian woodland
WLD_M02.3	Create and expand wood pasture	WLD_P02	Enhance and expand species-rich wood pasture, wood meadows and open mosaic habitats
WLD_M04.1	Create new species-diverse woodlands	WLD_P04	Increase tree and woodland cover
WLD_M04.2	Ensure a diverse range of species are included in planting mixes	WLD_P04	Increase tree and woodland cover
WLD_M04.3	Include native ground flora in woodland creation	WLD_P04	Increase tree and woodland cover
WLD_M04.4	Enhance, restore, and/or reintroduce soil fungi	WLD_P04	Increase tree and woodland cover

### Correct interpretation of LNRS mapping for BNG strategic significance multiplier

Habitat parcel H2 has been assessed as being completely **outside** the shaded hexagons in the LNRS Mapped Measures layer. It therefore **does not** meet the requirements of **Principle 1** and habitat parcel H2 is considered **not** to have the potential to be strategically significant.

Habitat parcel H3 has been assessed as being completely within a shaded hexagon in the LNRS Mapped Measures layer in the Local Habitat Map. It therefore meets the requirements of **Principle 1** and habitat parcel H3 is considered to have the potential to be strategically significant.

The proposed BNG habitat intervention for habitat parcel H3 has been assessed as being consistent with at least one of the 8 mapped measures of the relevant hexagon (M2) in the mapped measures layer (as listed in Table 2). The proposed habitat intervention therefore meets the requirements of **Principle 2**.

The proposed BNG habitat intervention for habitat parcel H3 is therefore considered strategically significant, as it meets the requirements of **both** Principle 1 **and** Principle 2, and the 15% strategic significance multiplier **applies** to habitat parcel H3 (but **does not** apply to habitat parcel H2).

## 6. Worked example 3

**One habitat parcel with one relevant hexagon. Strategic significance applies to part of the habitat parcel, but does not apply to the whole habitat parcel.**

In the example below, habitat parcel H4 within field parcel F3 is being assessed in the LNRS Local Habitat Map to determine whether the BNG strategic significance multiplier applies. Habitat parcel H4 is shown edged blue and field parcel F3 is shown edged green in the screenshot below.

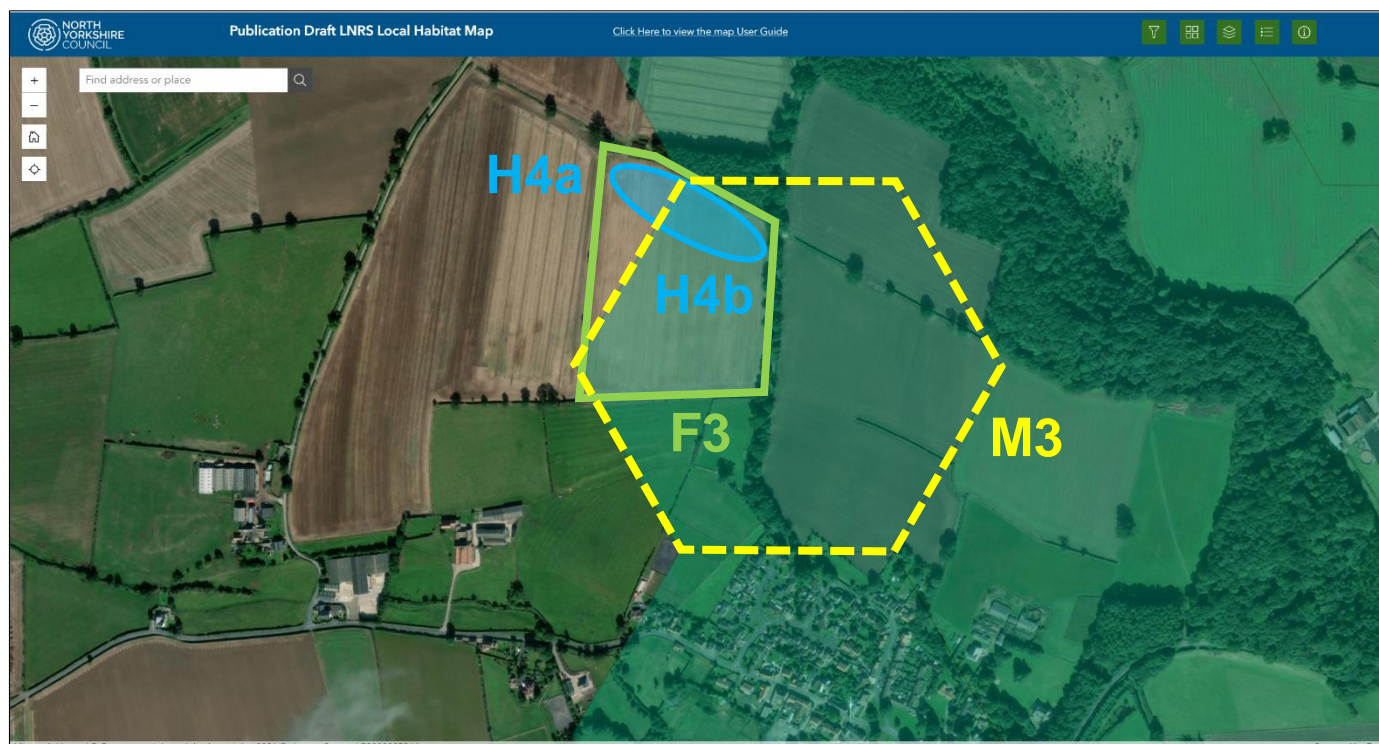


To assess strategic significance, the Mapped Measures layer is turned on (shown shaded turquoise) and outlined red in the screenshot below.





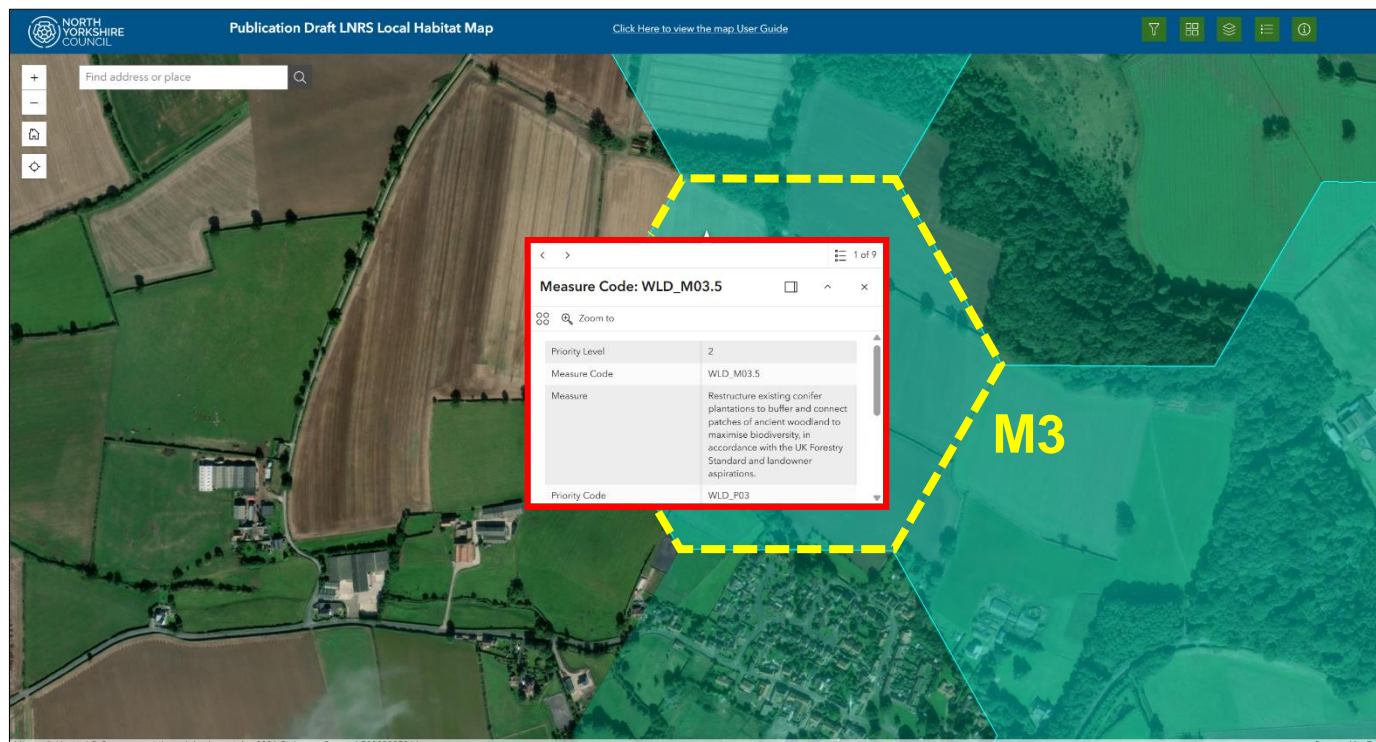
In this example, part of habitat parcel H4 is within a shaded hexagon in the Mapped Measures layer (H4b) and part of the habitat parcel is outside (H4a). There is only one hexagon within the Mapped Measures layer that overlaps with the habitat parcel, shown with a dashed yellow outline and labelled 'M3' in the screenshot below. This is the only 'relevant hexagon'.



In accordance with **Principle 1**, as part of habitat parcel H4 (H4b) is within hexagon M3 of the Mapped Measures layer, that part of habitat parcel H4 is considered to have the potential to be strategically significant. As part of habitat parcel H4 (H4a) is **outside** the shaded hexagons of the Mapped Measures layer, that part of habitat parcel H4 is **not** considered to have the potential to be strategically significant.

## Considering the relevant LNRS Mapped Measures

In accordance with **Principle 2**, in order for the strategic significance multiplier to apply, the habitat intervention being delivered in habitat parcel H4b must be consistent with the mapped measures of the relevant hexagon (M3). Clicking on the relevant hexagon within the Mapped Measures layer will open a pop-up window displaying the mapped measures for that particular hexagon (shown outlined red in the screenshot below).



In order for the strategic significance multiplier to apply, the habitat intervention being delivered must be consistent with at least one of the mapped measures of the relevant hexagon (M3).

An overview of the relevant mapped measures for this example is provided in the table below:

*Table 3: Mapped measures of the relevant hexagon (M3)*

Measure Code	Measure Summary	Priority Code	Priority Summary
WET_M07.2	Implement sensitive bank management	WET_P07	Expand the amount of riparian woodland
WET_M07.4	Create new riparian woodland	WET_P07	Expand the amount of riparian woodland
WLD_M02.3	Create and expand wood pasture	WLD_P02	Enhance and expand species-rich wood pasture, wood meadows and open mosaic habitats
WLD_M03.5	Restructure existing conifer plantations	WLD_P03	Buffer, enhance, restore and better connect fragmented patches of Ancient Woodland
WLD_M04.1	Create new species-diverse woodlands	WLD_P04	Increase tree and woodland cover
WLD_M04.2	Ensure a diverse range of species are included in planting mixes	WLD_P04	Increase tree and woodland cover
WLD_M04.3	Include native ground flora in woodland creation	WLD_P04	Increase tree and woodland cover
WLD_M04.4	Enhance, restore, and/or reintroduce soil fungi	WLD_P04	Increase tree and woodland cover
WLD_M04.5	Improve the condition and structure of existing woodlands	WLD_P04	Increase tree and woodland cover

### Correct interpretation of LNRS mapping for BNG strategic significance multiplier

Habitat parcel H4 has been assessed as being partly within and partly outside the shaded hexagons in the LNRS Mapped Measures layer. The part of habitat parcel H4 that is within the shaded hexagons (H4b) meets the requirements of **Principle 1** and habitat parcel H4b is considered to have the potential to be strategically significant.

The part of habitat parcel H4 that is outside the shaded hexagons in the Mapped Measures layer (H4a) **does not** meet the requirements of **Principle 1** and habitat parcel H4a is considered **not** to have the potential to be strategically significant.

The proposed BNG habitat intervention for habitat parcel H4b has been assessed as being consistent with at least one of the 9 mapped measures of the relevant hexagon (M3) in the mapped measures layer (as listed in Table 3). The proposed habitat intervention therefore meets the requirements of **Principle 2**.

The proposed BNG habitat intervention for habitat parcel H4b is therefore considered strategically significant, as it meets the requirements of **both** Principle 1 **and** Principle 2, and the 15% strategic significance multiplier **applies** to habitat parcel H4b (but **does not** apply to habitat parcel H4a).

**For the purposes of the BNG metric calculations, habitat parcel H4 should be divided into two separate habitat parcels (H4a and H4b) where it crosses the shaded hexagon in the Mapped Measures layer, as the strategic significance multiplier applies to only part of the habitat parcel.**



## 7. Worked example 4

**One habitat parcel with multiple relevant hexagons. Strategic significance applies to the whole habitat parcel.**

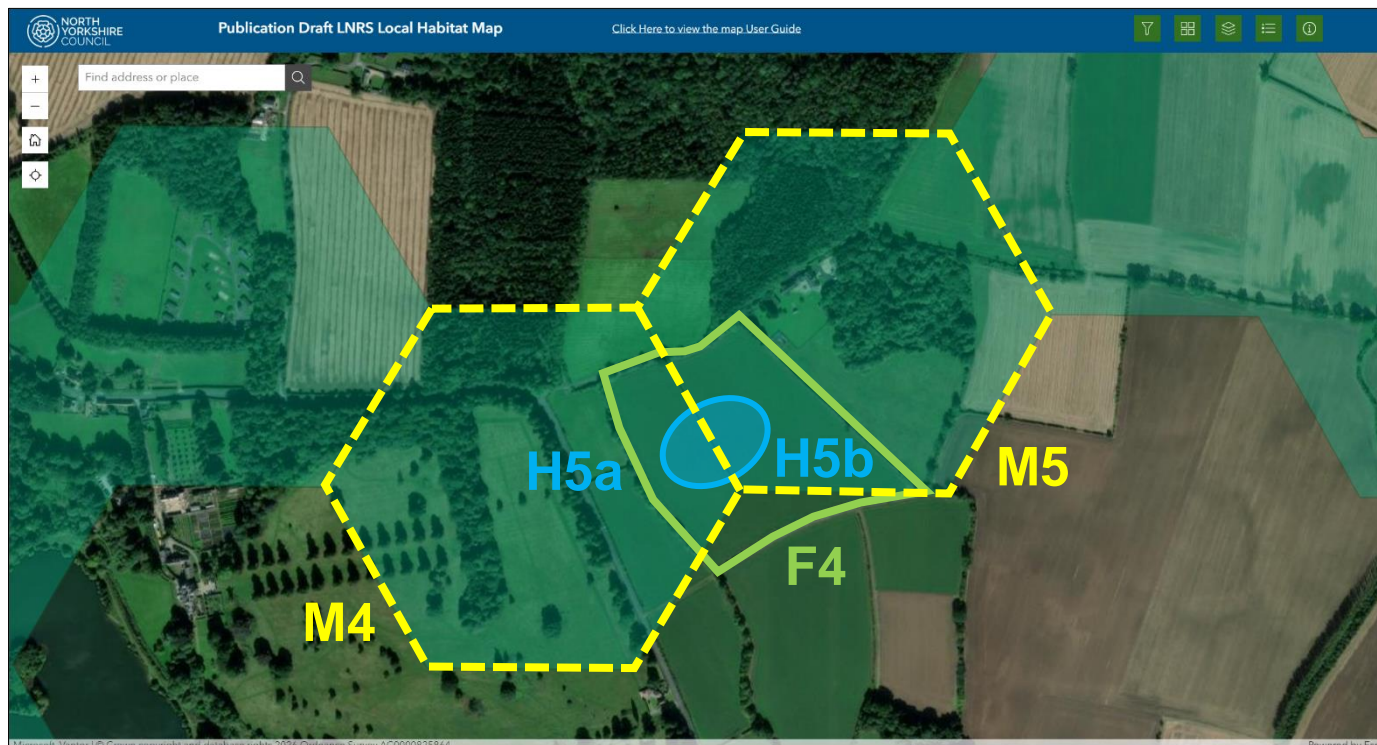
In the example below, habitat parcel H5 within field parcel F4 is being assessed in the LNRS Local Habitat Map to determine whether the BNG strategic significance multiplier applies. Habitat parcel H5 is shown edged blue and field parcel F4 is shown edged green in the screenshot below.



To assess strategic significance, the Mapped Measures layer is turned on, shown shaded turquoise and outlined in red in the screenshot below.



In this example, habitat parcel H5 crosses two shaded hexagons in the LNRS Mapped Measures layer. There are two hexagons within the Mapped Measures layer that overlap with the habitat parcel, shown with a dashed yellow outline and labelled 'M4' and 'M5' in the screenshot below. These are the 'relevant hexagons'. Part of habitat parcel H5 (H5a) is within hexagon M4 and part of the habitat parcel (H5b) is within hexagon M5.

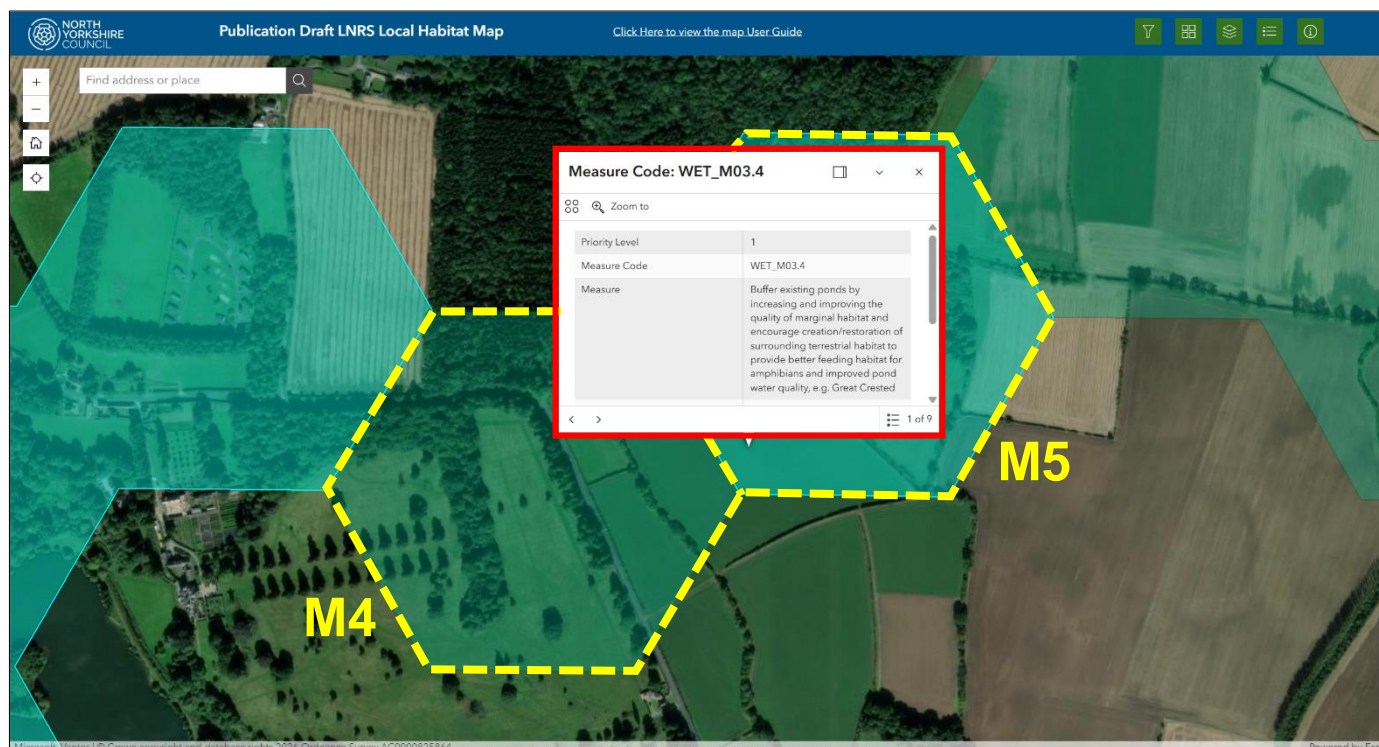


In accordance with **Principle 1**, as the whole of habitat parcel H5 is within the Mapped Measures layer, the whole of habitat parcel H5 is considered to have the potential to be strategically significant.



## Considering the relevant LNRS Mapped Measures

In accordance with **Principle 2**, in order for the strategic significance multiplier to apply to habitat parcel H5, the habitat intervention being delivered must be consistent with the mapped measures of the relevant hexagon (M4 or M5). Each part of the habitat parcel (H5a and H5b) should be considered separately, referring to the mapped measures of the relevant hexagon that each part is within. For habitat parcel H5a, the relevant hexagon is hexagon M4. For habitat parcel H5b, the relevant hexagon is hexagon M5. Clicking on each of the relevant hexagons within the Mapped Measures layer will open a pop-up window displaying the mapped measures for that particular hexagon (shown outlined red in the screenshot below).



In order for the strategic significance multiplier to apply, the habitat intervention being delivered must be consistent with at least one of the mapped measures of the relevant hexagon (M4 or M5).

An overview of the relevant mapped measures for this example is provided in the table below:

*Table 4: Mapped measures of the relevant hexagons (M4 and M5)*

<b>Relevant hexagon</b>	<b>Measure Code</b>	<b>Measure Summary</b>	<b>Priority Code</b>	<b>Priority Summary</b>
M5	WET_M03.4	Buffer existing ponds	WET_P03	Restore, enhance, and expand pond networks
M4, M5	WET_M07.1	Diversify the age structure of riparian woodland	WET_P07	Expand the amount of riparian woodland
M4	WET_M07.2	Implement sensitive bank management	WET_P07	Expand the amount of riparian woodland
M4, M5	WET_M07.4	Create new riparian woodland	WET_P07	Expand the amount of riparian woodland
M4	WLD_M01.3	Protect existing veteran trees and potential future veterans with suitable fenced enclosures	WLD_P01	Protect individual existing veteran trees
M4	WLD_M01.4	Expand veteran tree work into existing woodland, parkland and farmland	WLD_P01	Protect individual existing veteran trees
M4	WLD_M01.5	Sustainably manage parkland pasture	WLD_P01	Protect individual existing veteran trees
M4, M5	WLD_M02.3	Create and expand wood pasture	WLD_P02	Enhance and expand species-rich wood pasture, wood meadows and open mosaic habitats
M4	WLD_M02.6	Improve the management of wood pasture	WLD_P02	Enhance and expand species-rich wood pasture, wood meadows and open mosaic habitats
M4, M5	WLD_M04.1	Create new species-diverse woodlands	WLD_P04	Increase tree and woodland cover
M4, M5	WLD_M04.2	Ensure a diverse range of species are included in planting mixes	WLD_P04	Increase tree and woodland cover
M4, M5	WLD_M04.3	Include native ground flora in woodland creation	WLD_P04	Increase tree and woodland cover
M4, M5	WLD_M04.4	Enhance, restore, and/or reintroduce soil fungi	WLD_P04	Increase tree and woodland cover
M4, M5	WLD_M04.5	Improve the condition and structure of woodlands	WLD_P04	Increase tree and woodland cover

### **Correct interpretation of LNRS mapping for BNG strategic significance multiplier**

Both parts of habitat parcel H5 (H5a and H5b) have been assessed as being completely within shaded hexagons in the LNRS Mapped Measures layer in the Local Habitat Map. Habitat parcel H5 therefore meets the requirements of **Principle 1** and is considered to have the potential to be strategically significant.

The proposed BNG habitat intervention for habitat parcel H5a has been assessed as being consistent with at least one of the 13 mapped measures of the relevant hexagon (M4) in the Mapped Measures layer (as listed in Table 4). The proposed habitat intervention therefore meets the requirements of **Principle 2**.

The proposed BNG habitat intervention for habitat parcel H5b has been assessed as being consistent with at least one of the 9 mapped measures of the relevant hexagon (M5) in the Mapped Measures layer (as listed in Table 4). The proposed habitat intervention therefore meets the requirements of **Principle 2**.

The proposed BNG habitat intervention for habitat parcel H5 is therefore considered strategically significant, as it meets the requirements of **both** Principle 1 **and** Principle 2, and the 15% strategic significance multiplier **applies**.

**NOTE:** In cases where a habitat parcel overlaps with two or more hexagons in the LNRS Mapped Measures layer, but the proposed BNG habitat intervention is only consistent with the mapped measures for **one** of the relevant hexagons, strategic significance will only apply to the part of the habitat parcel that overlaps with that hexagon. Other parts of the habitat parcel that overlap with other hexagons will **not** be eligible for strategic significance if they do not align with the mapped measures for their respective hexagons.



## 8. Worked example 5

**One habitat parcel with no relevant hexagons. Strategic significance does not apply (does not meet Principle 1).**

In the example below, habitat parcel H6 within field parcel F5 is being assessed in the LNRS Local Habitat Map to determine whether the BNG strategic significance multiplier applies. Habitat parcel H6 is shown edged blue and field parcel F5 is shown edged green in the screenshot below.



To assess strategic significance, the Mapped Measures layer is turned on, shown shaded turquoise and outlined in red in the screenshot below.



In this example, although field parcel F5 is partly within the Mapped Measures layer, habitat parcel H6 is completely outside the shaded hexagons (no part of the habitat parcel overlaps hexagons in the Mapped Measures layer). There is therefore no relevant hexagon. The nearest hexagon is shown with a dashed grey outline in the screenshot below.



In accordance with **Principle 1**, as no part of habitat parcel H6 is within the Mapped Measures layer, the whole of habitat parcel H6 is considered **not** to have the potential to be strategically significant.

As there is no relevant hexagon, there are no relevant LNRS mapped measures to consider.

### Correct interpretation of LNRS mapping for BNG strategic significance multiplier

Habitat parcel H6 has been assessed as being completely outside the shaded hexagons in the LNRS Mapped Measures layer in the Local Habitat Map. It therefore **does not** meet the requirements of **Principle 1** and habitat parcel H6 is considered **not** to have the potential to be strategically significant.

The proposed BNG habitat intervention for habitat parcel H6 is therefore considered **not** strategically significant, as it does not meet the requirements of Principle 1 (and therefore cannot meet the requirements of Principle 2), and the 15% strategic significance multiplier **does not apply**.