

# North Yorkshire and York Local Nature Recovery Strategy (LNRS)

Guidance Note: Using the statutory LNRS Local Habitat  
Map GIS data layers

March 2026



## Contents

1. Introduction	1
2. Accessing the Local Habitat Map	1
3. Overview of the map layers	2
4. Downloading the map layers as GIS data	3
5. Using the Areas of Particular Importance for Biodiversity (APIBs) data layer	3
6. Using the Areas that Could Become of Particular Importance for Biodiversity (ACBs) data layer	5
7. Using the Mapped Measures data layer	7
8. Crediting the LNRS data	11

# 1. Introduction

The Local Habitat Map is one of the two statutory outputs of the Local Nature Recovery Strategy (LNRS) for North Yorkshire and York. It is an interactive online web map, hosted by North Yorkshire Council through ArcGIS Online.

Local Nature Recovery Strategies (LNRS) are a new system of spatial strategies intended to drive nature recovery, along with associated environmental improvements. Their main purpose is to identify appropriate actions and suitable locations to enhance existing habitats, or create new habitats, where this is most likely to provide the greatest benefits for nature and the wider environment.

Our nature network (the Local Habitat Map) provides a spatial vision for this first iteration of the LNRS with the ambition to create a comprehensive and connected network across North Yorkshire and York.

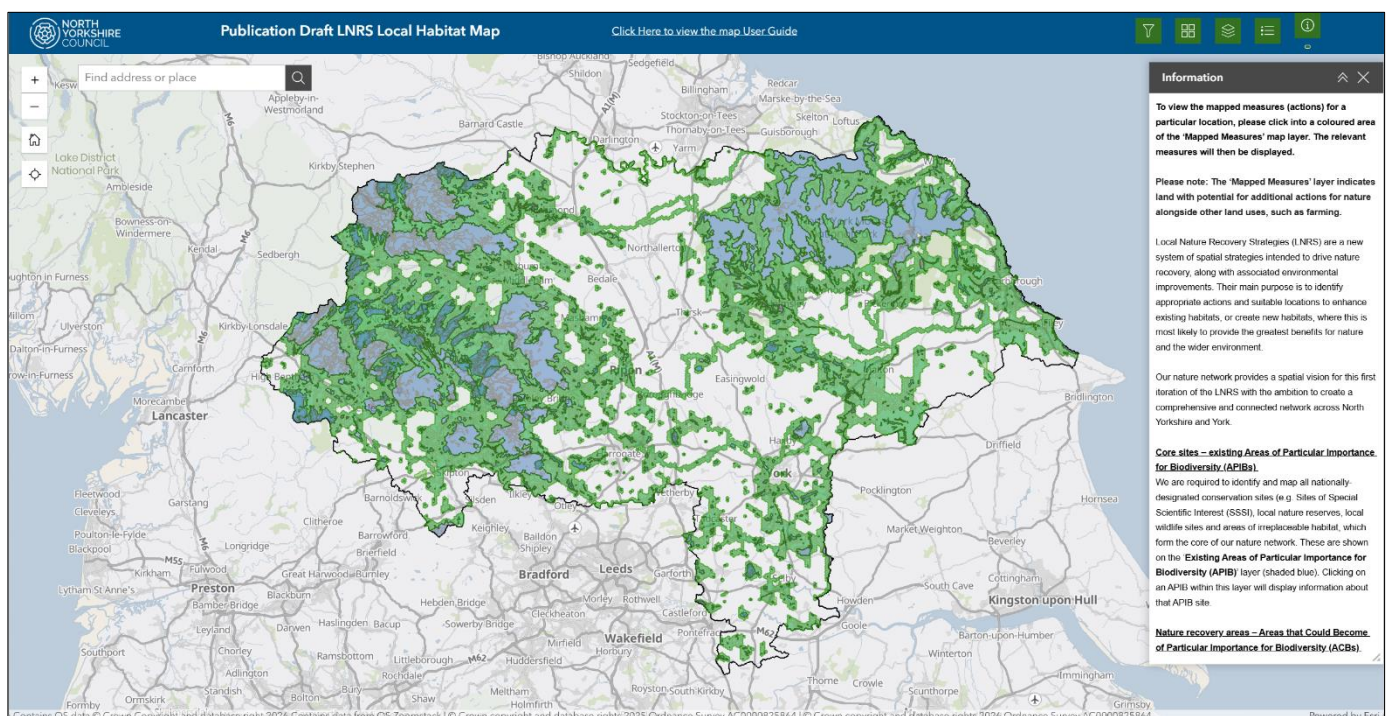
# 2. Accessing the Local Habitat Map

The Local Habitat Map is an interactive online map. It can be viewed through any standard web browser (e.g. Microsoft Edge or Google Chrome). Due to the technical complexity of the map, it is best viewed on a laptop or desktop computer.

The Local Habitat Map can be accessed alongside the published LNRS documents at the link below:

[www.northyorks.gov.uk/lnrs-documents](http://www.northyorks.gov.uk/lnrs-documents)

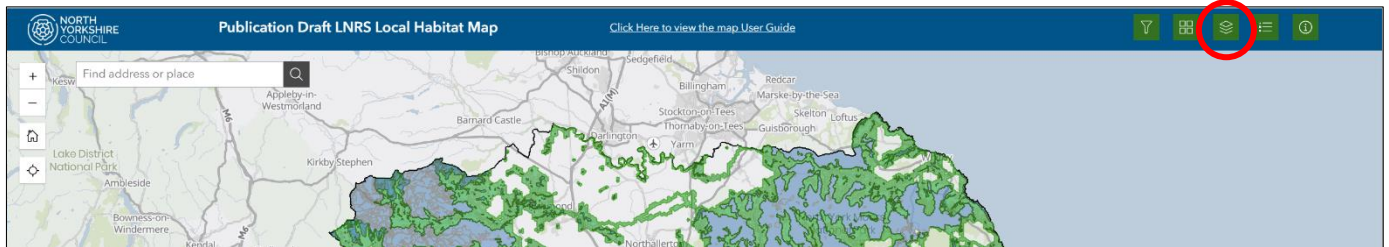
When you first access the map, it will open showing the default view shown in the screenshot below.



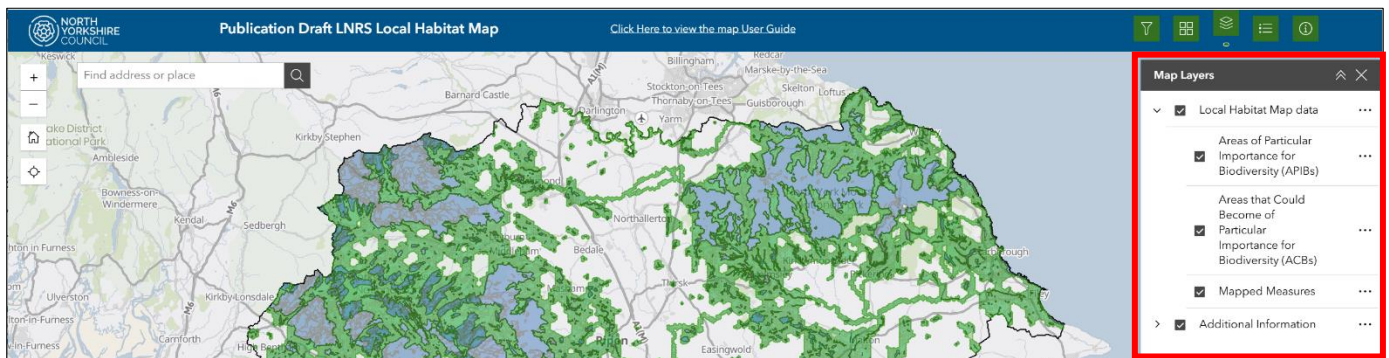
**Please note: The published Local Habitat Map (as shown above) should be used as the main point of reference when using the LNRS GIS data layers. Please refer to the way the data is presented within the published Local Habitat Map when working with the GIS layers.**

## 3. Overview of the map layers

The Local Habitat Map contains a number of different data layers. The different data layers within the map can be accessed by clicking the green 'map layers' button in the top-right corner of the map window, shown circled red in the screenshot below.



This will display a list of all the data layers contained within the map. Layers can be turned on and off by clicking the check box next to the layer name, shown outlined red in the screenshot below. Layers currently turned on are shown with a grey tick mark. Layers currently turned off are shown with an empty check box.



### Statutory LNRS layers:

The statutory LNRS data layers are contained within the parent layer 'Local Habitat Map data'. These are:

- Areas of Particular Importance for Biodiversity (APIBs)
- Areas that Could Become of Particular Importance for Biodiversity (ACBs)
- Mapped Measures

The three statutory layers are available for download as GIS data (see Section 4 below).

### Non-statutory layers:

We have also included several non-statutory data layers within the Local Habitat Map, which provide useful additional information and wider context to the statutory layers listed above. These data layers are contained within the parent layer 'Additional Information'.

These non-statutory layers are not available for download as GIS data as they are not a statutory part of the LNRS and are drawn in from external sources.

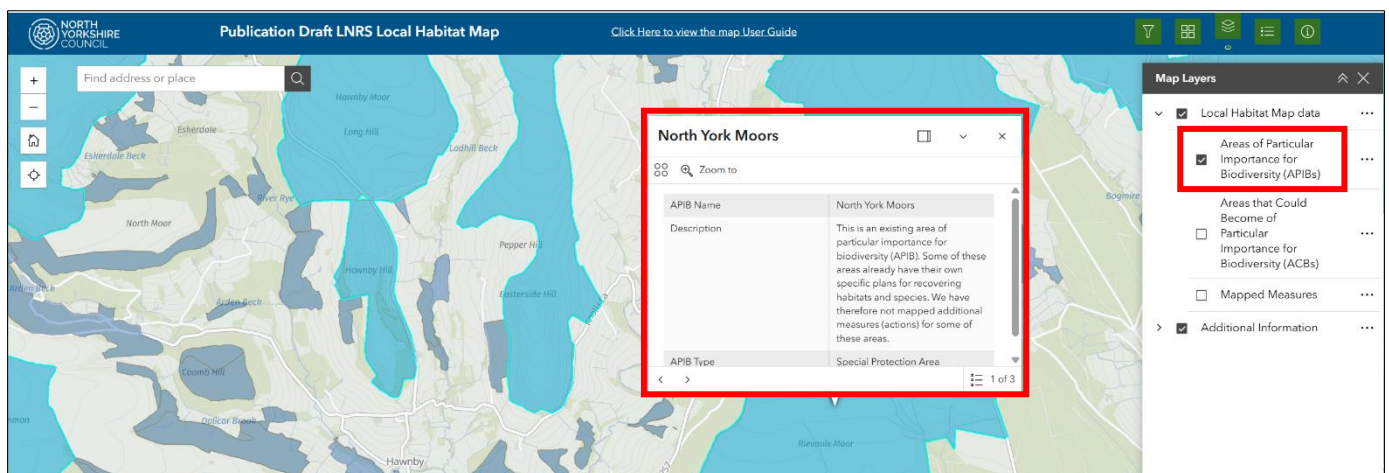
## 4. Downloading the map layers as GIS data

The three statutory LNRS map layers are available for download in GIS format from the 'Data North Yorkshire' online portal.<sup>1</sup> Searching for 'LNRS' will bring up the relevant dataset. A direct link to the LNRS GIS data download page is also available at [www.northyorks.gov.uk/lnrs-documents](http://www.northyorks.gov.uk/lnrs-documents) (see section titled 'Download LNRS GIS data').

## 5. Using the Areas of Particular Importance for Biodiversity (APIBs) data layer

The Areas of Particular Importance for Biodiversity (APIBs) data layer shows the existing sites across our geography that have been identified as being of particular importance for nature. These are sites with an existing local or national designation, or areas of irreplaceable habitat.

Existing APIB sites are shown in blue shading on the published map. Clicking on one of the APIB sites will generate a pop-up window showing the attributes for the APIB site. The pop-up window is shown outlined red in the screenshot below.



**Please note** that there may be multiple overlapping APIB types at the same location. This will be indicated in the published map by a '1 of 2' or '1 of 3' note in the corner of the pop-up window.

<sup>1</sup> Data North Yorkshire <https://www.datanorthyorkshire.org/>

**Attributes of the ‘Areas of Particular Importance for Biodiversity (APIBs)’ data layer:**

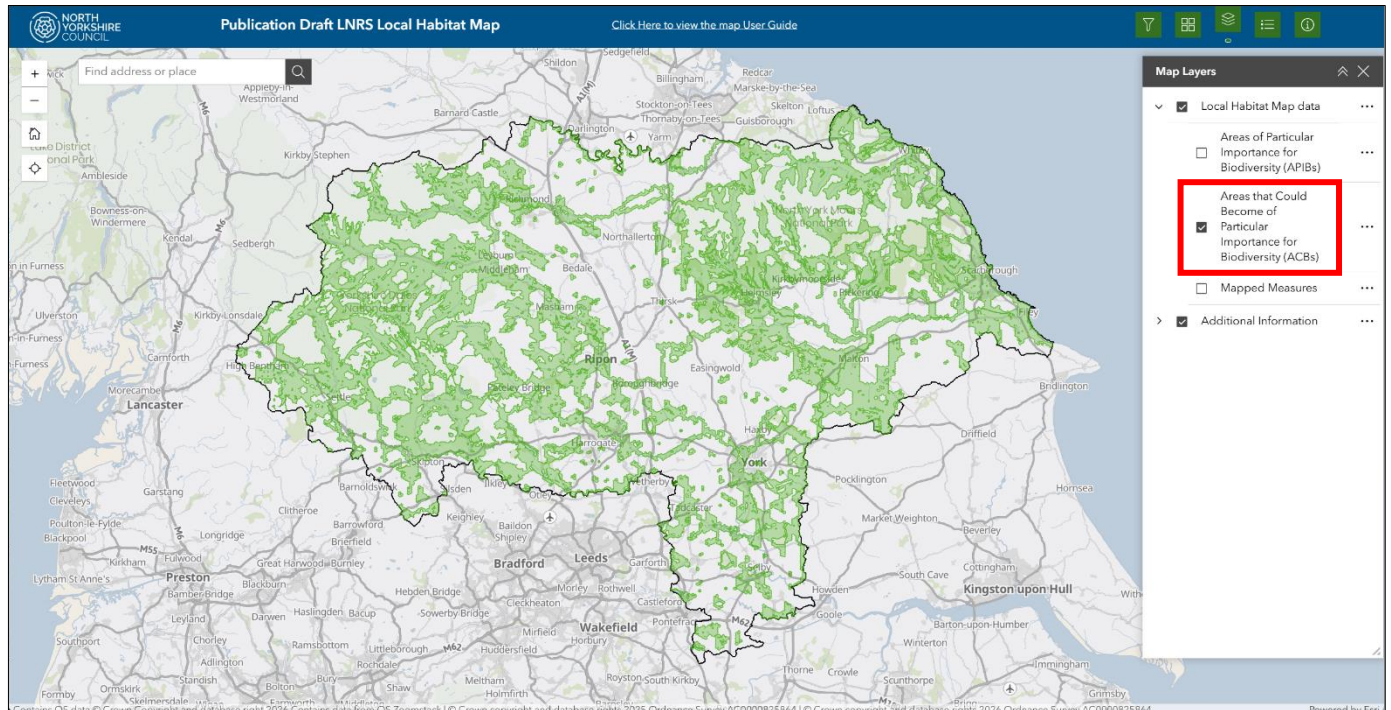
The table below lists the GIS attributes that are included in this data layer. A brief description of each attribute is provided to help explain its purpose. Key attributes are shown shaded green within the table.

**Please note** that some attributes do not appear in the pop-ups in the published Local Habitat Map. Attributes that do not appear in the pop-ups in the published map are shaded grey within the table.

Attribute	Full Name in Pop-up	Example Value	Description
FID	n/a	Unique numeric value	Provides the unique Feature ID for the relevant feature.
APIB_Name	APIB Name	North York Moors	Provides the name of the APIB site
APIB_Site_	n/a	Unique numeric value	Provides the unique site identification reference code for the APIB site
LNRS_ID	n/a	Numeric value	Provides the unique numeric reference for the relevant LNRS strategy area. In this case North Yorkshire and York (07).
APIB_ID	n/a	Unique numeric value	Provides the unique numeric reference for each polygon within the APIB data layer.
APIB_Type_	n/a	SPA	Provides the abbreviated APIB type. Either the relevant national or local designation type, or the relevant irreplaceable habitat type.
Descriptio	Description	This is an existing area of particular importance for biodiversity (APIB). Some of these areas already have their own specific plans for recovering habitats and species. We have therefore not mapped additional measures (actions) for some of these areas.	Provides the APIB description text (same for all APIB sites)
GlobalID	n/a	Unique alphanumeric value	Provides the unique Global ID reference for the relevant feature.
APIB_Type1	APIB Type	Special Protection Area	Provides the full APIB type. Either the relevant national or local designation type, or the relevant irreplaceable habitat type.

## 6. Using the Areas that Could Become of Particular Importance for Biodiversity (ACBs) data layer

The Areas that Could Become of Particular Importance for Biodiversity (ACBs) data layer shows the strategic locations across our geography that have been identified as places where efforts to enhance nature and biodiversity should be focused, outside the existing APIB sites. This layer is shown in bright green shading on the published map, as shown in the screenshot below.



**Please note** that this is a 'display only' layer and is not interactive in the published map. The APIB and ACB layers together form the LNRS strategic network.

**Attributes of the ‘Areas that Could Become of Particular Importance for Biodiversity (ACBs)’ data layer:**

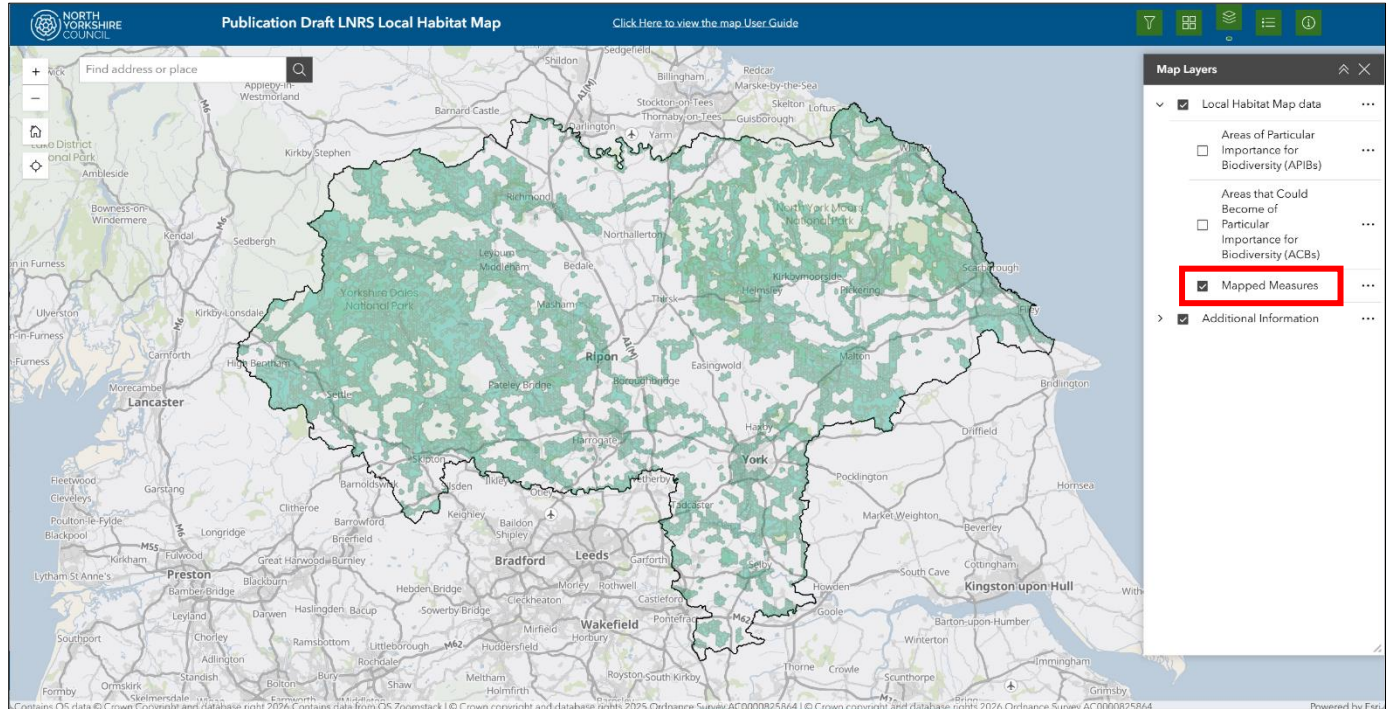
The table below lists the GIS attributes that are included in this data layer. A brief description of each attribute is provided to help explain its purpose.

**Please note** that this is a ‘display only’ layer. There are no pop-ups associated with the Areas that Could Become of Particular Importance for Biodiversity (ACBs) data layer in the published Local Habitat Map.

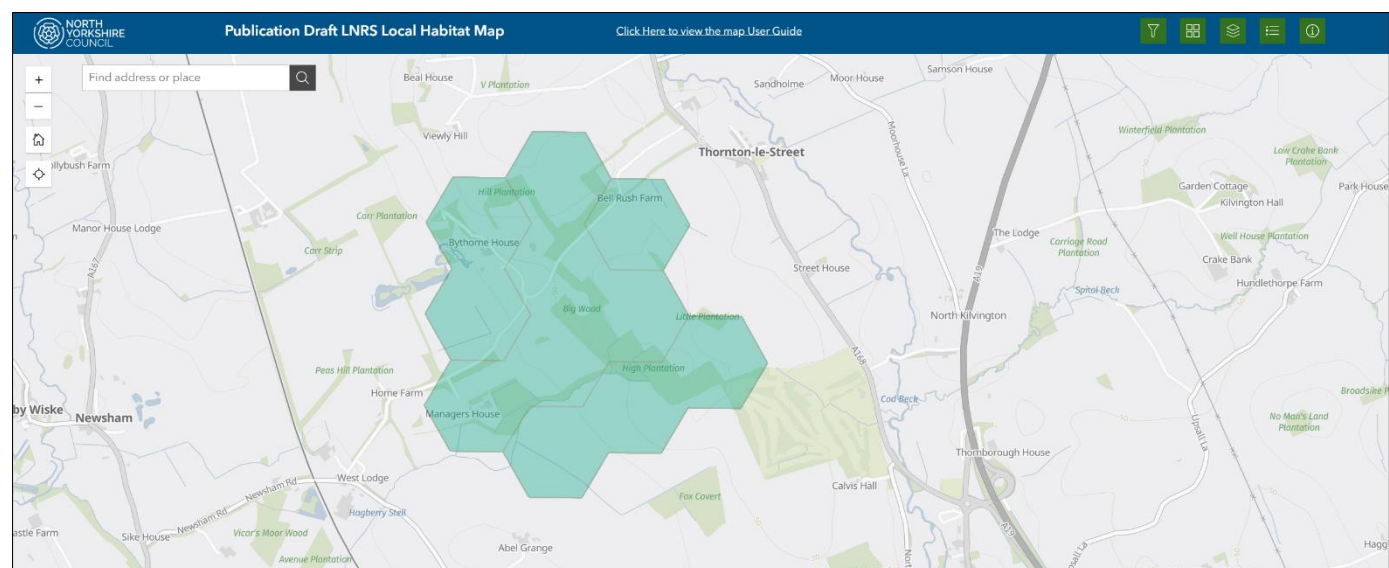
<b>Attribute</b>	<b>Full Name in Pop-up</b>	<b>Example Value</b>	<b>Description</b>
FID	n/a	Unique numeric value	Provides the unique Feature ID for the relevant feature.
LNRS_ID	n/a	Numeric value	Provides the unique numeric reference for the relevant LNRS strategy area. In this case North Yorkshire and York (07).
ACB_ID	n/a	Unique numeric value	Provides the unique numeric reference for each polygon within the ACB data layer.

## 7. Using the Mapped Measures data layer

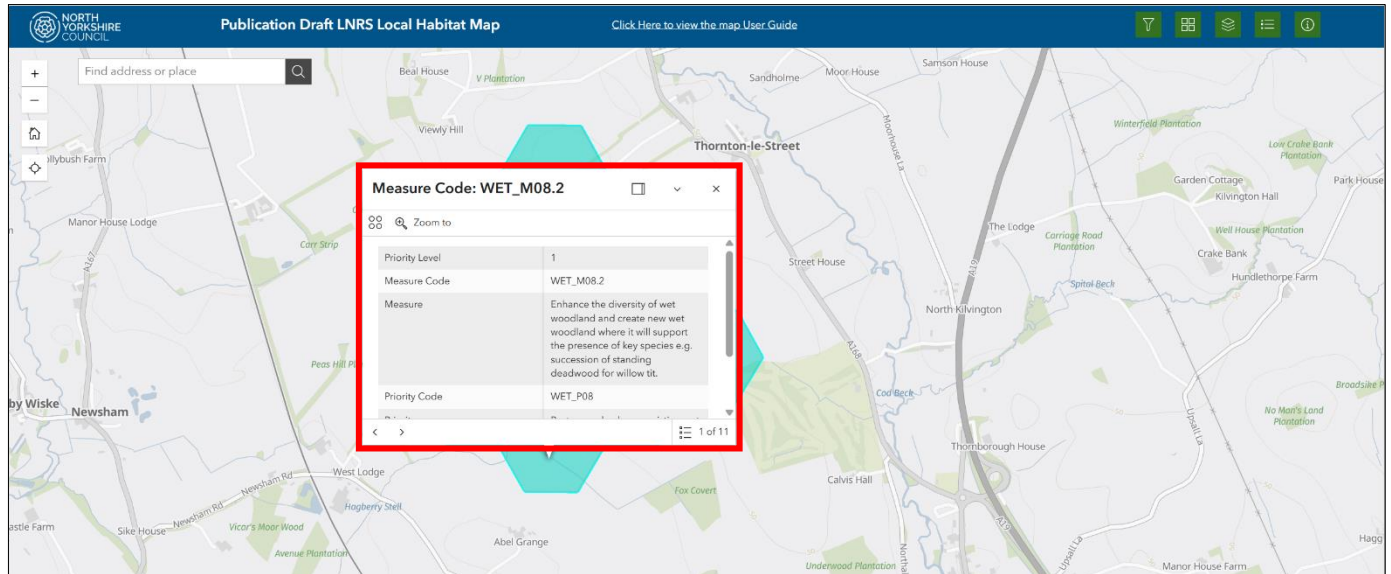
The Mapped Measures data layer shows the locations across our geography that have been identified as places where efforts to enhance nature and biodiversity should be focused. This layer is shown in turquoise shading on the published map, as shown in the screenshot below.



This layer overlaps with both the APIB and ACB data layers above and shows the specific mapped measures from the LNRS that have been identified as being most appropriate for each location within the strategic network. The Mapped Measures data layer is based on 20ha regular hexagons and the outline of each hexagon can be seen in the published map by the light grey outline when you zoom into the map, as shown in the screenshot below.



Clicking on one of the hexagons in the published map will generate a pop-up window showing information about the mapped measures for that hexagon (it may take a few moments for the pop-up to appear, depending on the speed of your internet connection). The pop-up window is shown outlined red in the screenshot below.



**Please note** for most hexagons there will be multiple mapped measures at the same location. This will be indicated by a '1 of 2' or '1 of 3' note in the corner of the pop-up window.

**Attributes of the ‘Mapped Measures’ data layer:**

The table below lists the GIS attributes that are included in this data layer. A brief description of each attribute is provided to help explain its purpose. Key attributes are shown shaded green within the table.

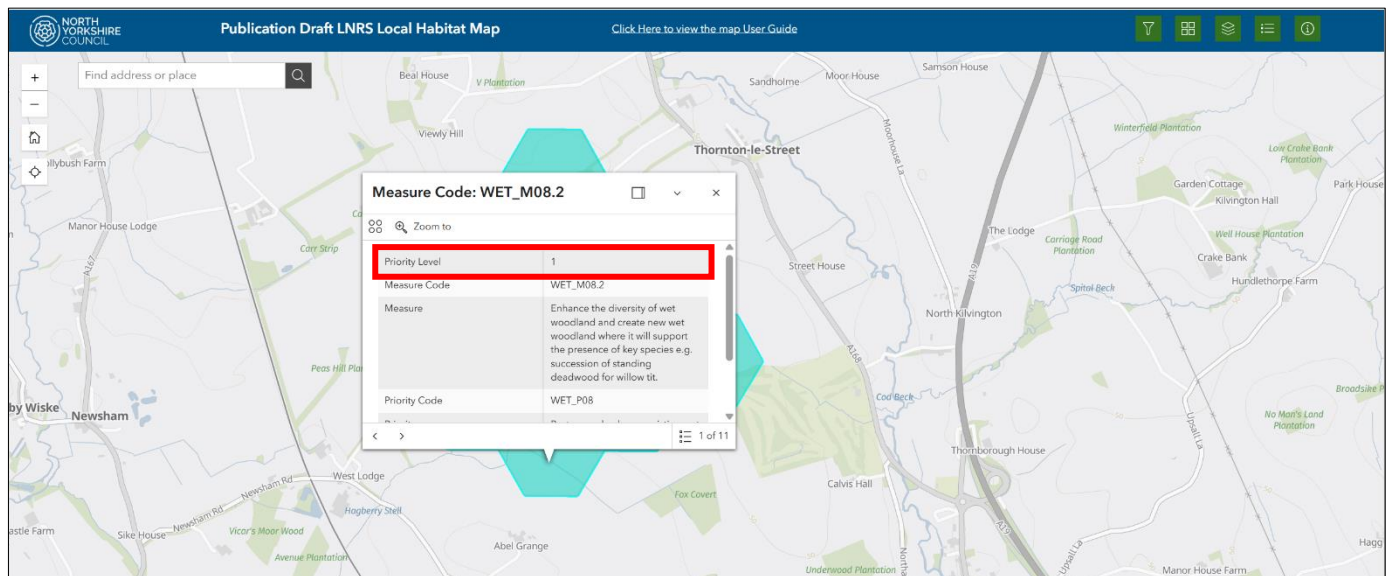
**Please note** that some attributes do not appear in the pop-ups in the published Local Habitat Map. Attributes that do not appear in the pop-ups in the published map are shaded grey within the table.

Attribute	Full Name in Pop-up	Example Value	Description
FID	n/a	Unique numeric value	Provides the unique Feature ID for the relevant feature.
PM_Desc	Measure	Create new species-diverse woodlands [...]	Provides the description of the relevant LNRS Mapped Measure.
Pri_Code	Priority Code	WLD_P04	Provides the unique Priority Code of the relevant LNRS Priority that the Mapped Measure will contribute to.
Priority	Priority	Enhance all types of existing woodland and increase tree and woodland cover [...]	Provides the description of the relevant LNRS Priority that the Mapped Measure will contribute to.
PM_ID	Measure Code	WLD_M04.1	Provides the unique Measure Code of the relevant Mapped Measure.
PriorityLe	Priority Level	Numeric value between 1 and 3	Provides the relative Priority Level of the relevant Mapped Measure. Level 1 = high priority Level 2 = moderate priority Level 3 = lower priority
AreaHa	n/a	Numeric value	Provides the total combined area of the polygon for each Mapped Measure in hectares.
LNRS_ID	n/a	Numeric value	Provides the unique numeric reference for the relevant LNRS strategy area. In this case North Yorkshire and York (07).

**Please note:** If using the LNRS GIS data in Shapefile (.shp) format, some longer Priority and Measure descriptions (attributes ‘Priority’ and ‘PM\_Desc’) will not be fully included. This is due to a limitation of the Shapefile file format where all data fields are limited to a maximum of 254 characters. It will generally be obvious where words are missing from the end of Priority and Measure descriptions. In these cases, please refer to [Document 4](#) of the published LNRS documents to view the full Priority and Measure descriptions. The relevant Priority or Measure description can be found using the unique Priority Code and Measure Code (attributes ‘Pri\_Code’ and ‘PM\_ID’).

## ‘Priority Level’ attribute of the mapped measures data layer

Each mapped measure has been assigned a priority level (attribute ‘PriorityLe’), with level 1 having the highest priority, level 2 having a moderate priority, and level 3 having a lower priority. The priority level attribute is displayed in the pop-up window in the published map as outlined red in the screenshot below.



It is not the intention to say that some measures are ‘low priority’, but to provide a relative level of priority across the mapped measures. The general principle is that where a measure has more ‘niche’ requirements (and therefore can only be done in a small number of places) it has been assigned a higher priority level (e.g. Level 1). For measures that have fewer constraints (and therefore can be done in a much wider number of places), these have been assigned a lower priority level (e.g. Level 3).

The priority levels should be used as a guide as to which measures should be prioritised in a particular location. Generally, a Level 1 measure should be prioritised over a Level 2 or Level 3 measure, and a Level 2 measure should be prioritised over a Level 3 measure, subject to the site conditions being suitable to deliver the higher priority measure.

The mapped measures are presented in priority order in the pop-up window in the published map, with Priority Level 1 measures appearing first, followed by Level 2 and then Level 3 measures.

## 8. Crediting the LNRS data

If you intend to republish any part of the LNRS GIS data as part of your published outputs, we request that you seek consent to do so from North Yorkshire Council. Please email [LNRS@northyorks.gov.uk](mailto:LNRS@northyorks.gov.uk) to request permission to publish part of the LNRS GIS data.

Any outputs that include any part of the LNRS GIS data should include the below acknowledgement:

Data is provided by North Yorkshire Council as part of the Local Nature Recovery Strategy (LNRS) 2026.

Any outputs that include any part of the LNRS 'Areas of Particular Importance for Biodiversity (APIBs)' layer should also include the below acknowledgment:

This map incorporates Open Government License data and © Crown copyright and database rights 2026 Ordnance Survey AC0000825864.