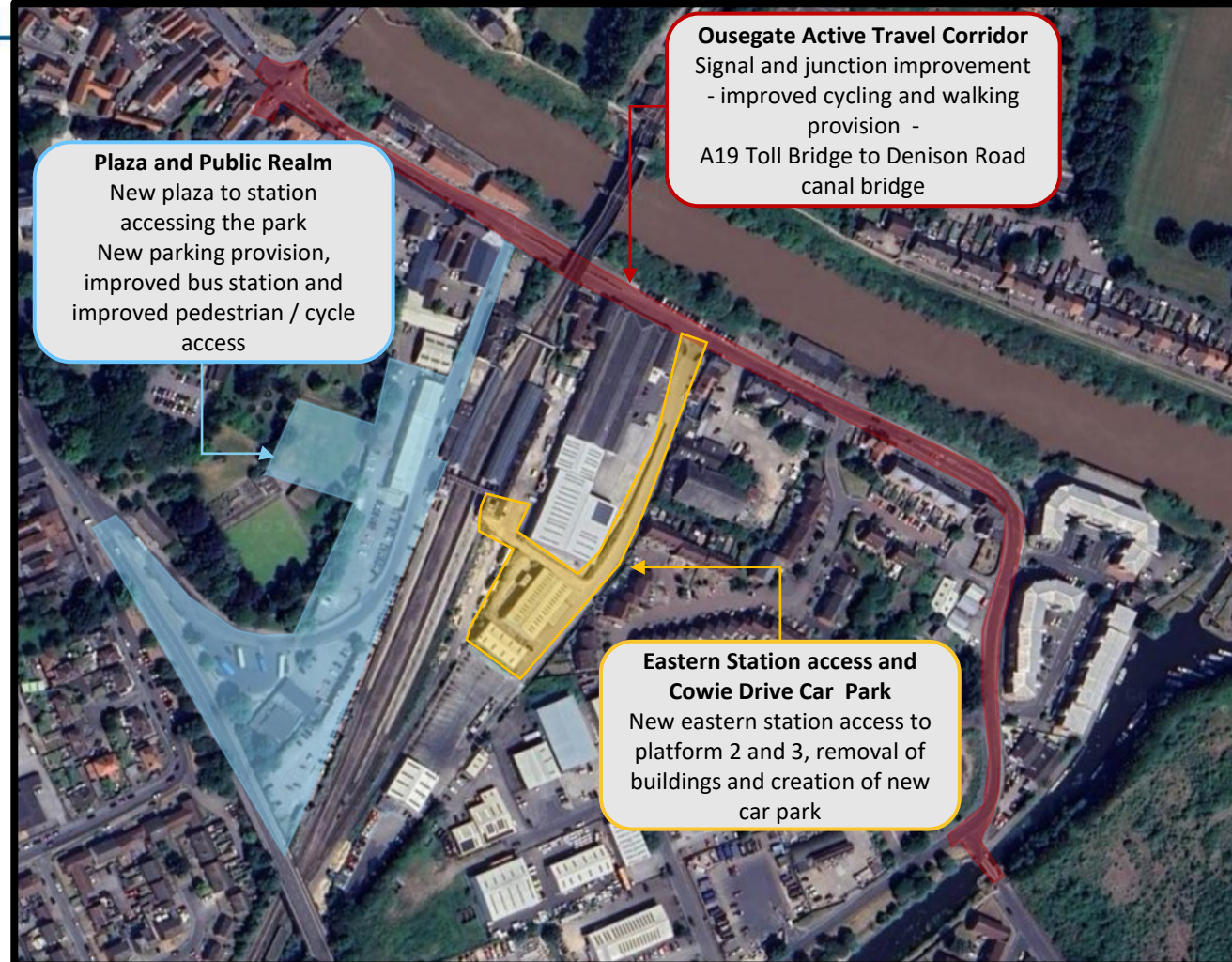


Selby Station Gateway– Transforming Cities Fund

Commencing in October 2025. A circa £32 million investment for Selby placing the Rail Station at the heart of future sustainable growth and prosperity - linking housing and employment development through cycling and walking routes to the town centre and communities.



Delivered in partnership by:



Funded by:



HM Government



DAVID SKAITH
MAYOR