

SPECIAL EDUCATIONAL NEEDS AND DISABILITY SUPPORT

The government is committed to making sure every child achieves their best. That's why we're making important changes to support children and young people with special educational needs (SEN) and disabilities. We want to make sure that children and young people know what is changing and what this means for them. The Department for Education and the Council for Disabled Children have been working with children and young people with SEN and disabilities to create four short films and information leaflets on Education, Health and Care plans, the Local Offer, making decisions and post-16 support. This is a great example of how working together we can provide information on what's important to you and in a way you want to receive it.

Yours sincerely,
Edward

Edward Timpson, Minister for Children and Families.

What is changing?

From September 2014 there are going to be some changes to the way disabled children and young people, and those with special educational needs (SEN), get the support they need.

The government has changed the law. The new law will mean that professionals from different services will have to work more closely together to give children and young people* with special educational needs or a disability the support they need. Children and young people will have more say over what support and services are offered in their local area, and more help will be available for young people as they prepare for adulthood.



* A child is a person under compulsory school age. A young person is a person over compulsory school age but under 25. A person is no longer of compulsory school age after the last day of summer term during the year in which they become 16.

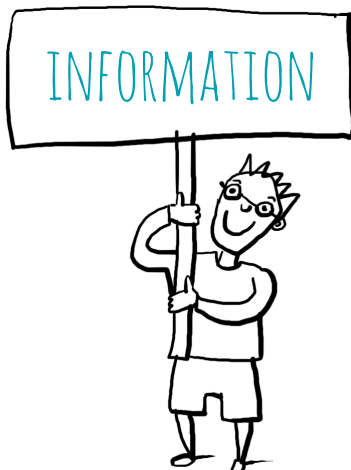
Some of the biggest changes children and young people with a special educational need or a disability will see include:

- a bigger focus on your aspirations for the future and the support you will need to achieve your goals
- statements of special educational needs and Learning Difficulty Assessments will be replaced by Education, Health and Care plans
- your local authority consulting children and young people about the services it should be offering
- you being more involved in making decisions about how you are supported
- having more information, advice and support to understand your options as you move into adulthood.



You can find out more about the changes to your special educational needs or disability support by:

- talking to an impartial information, advice and support service. You can find contact information for one of these here:
www.parentpartnership.org.uk/find-your-pps/
- talking to your family, teachers, tutors and support workers
- getting in touch with your local authority. You can find their contact information on the GOV.UK website: <https://www.gov.uk/find-your-local-council>



To help you understand the changes to the law we have created a video, leaflet and poster each for four main areas of your SEN and disability support.

These four areas are:

- Education, Health and Care plans
- The Local Offer
- Post-16 support
- Making decisions

