

NORTH YORKSHIRE COUNTY COUNCIL
PUBLIC FOOTPATHS, 15.54/160/3, 15.54/96/1, 15.54/96/2, 15.54/96/3 & 15.54/7/1 AND
(TEMPORARY PROHIBITION OF PEDESTRIANS, CYCLISTS & HORSE TRAFFIC)
PUBLIC BRIDLEWAYS 15.54/5/1, 15.54/5/2 & 15.54/5/3, HARROGATE
ORDER 2022 NO 113

Road Traffic Regulation Act 1984 – Section 14(1) (as amended)

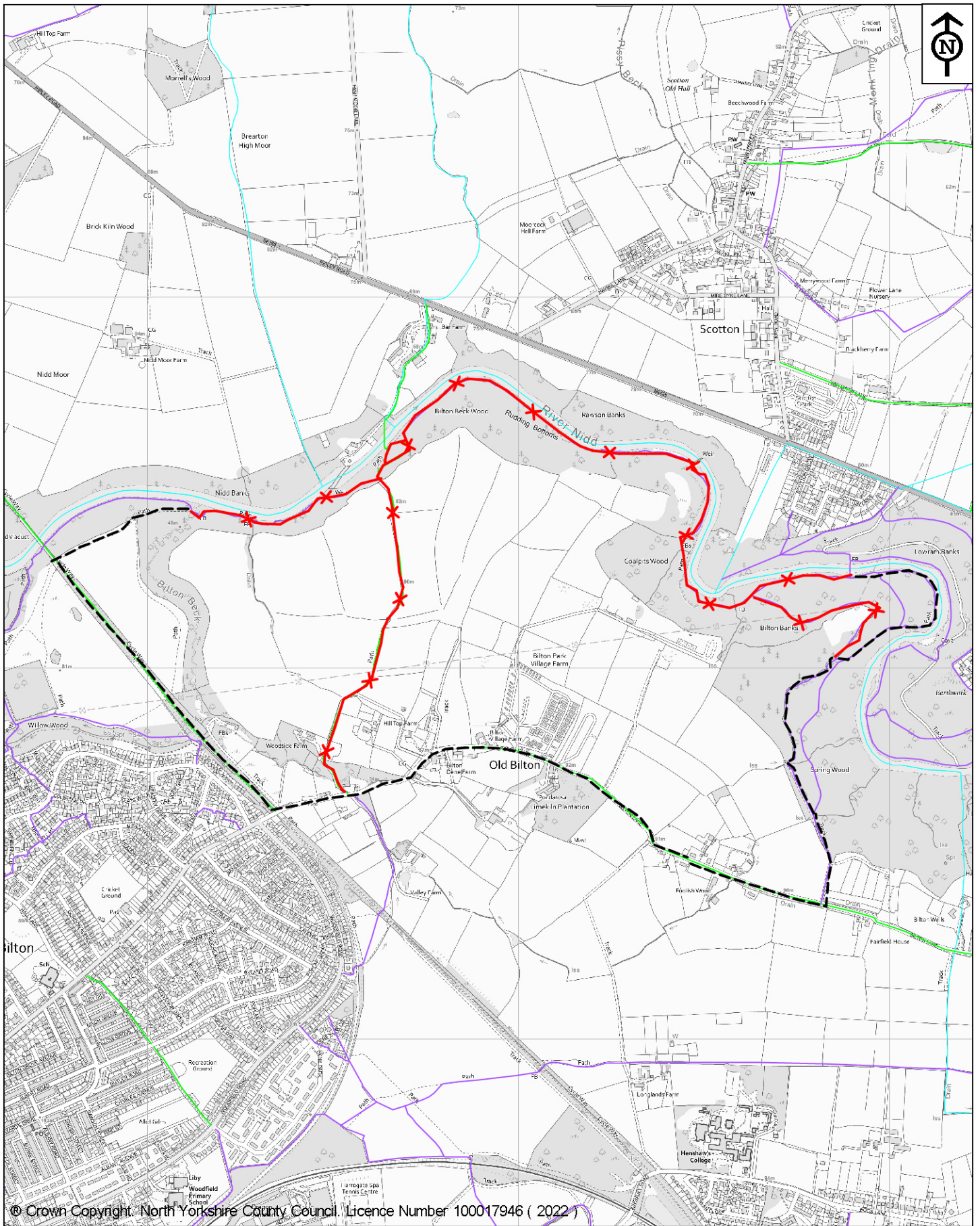

North Yorkshire County Council intends to make this Order to prohibit any pedestrian from using Public Footpaths 15.54/160/3, 15.54/96/1, 15.54/96/2, 15.54/96/3 and 15.54/7/1 and any pedestrian, cyclist or person riding or leading a horse from using Public Bridleways 15.54/5/1, 15.54/5/2 & 15.54/5/3, Harrogate between grid references SE 31135 58427 and SE 33036 and 58264, SE 31535 57665 and SE 31615 58578 and SE 32954 58262 and SE 32836 58013 for a temporary period of up to six months (subject to access to premises) between 1st June 2022 and 30th November 2022 to ensure the safety of contractors and the public during tree felling which will be taking place adjacent to the public footpaths. It is estimated the work will take 25 weeks.

The closure period will apply as indicated by the placing of traffic signs and a local alternative route will be signed on site where appropriate.

All enquiries to: Jonny Walker, The Woodland Trust, Kempton Way, Grantham, Lincolnshire, NG31 6LL.

Further details can be viewed at: <https://www.northyorks.gov.uk/rights-way-public-notice>

Dated 12 May 2022

**North Yorkshire
County Council**

Public Rights of Way
Waste and Countryside Services
County Hall
Northallerton
DL7 8AH

Key:

- Closed route — x — x —
- Alternative route - - - - -
- Public Footpath — — — — —
- Public Bridleway — — — — —

Map drawn on 4 May 2022
Drawn by RL

North Yorkshire County Council

Temporary closure of
Footpath, Bridleway 15.54/160/3,
15.54/96/1, 15.54/96/2, 15.54/96/3
and 15.54/7/1 and Public Bridleways
15.54/5/1, 15.54/5/2 & 15.54/5/3. in
Harrogate

Scale 1:13750
File Ref No. 72/15.54/160/3