

NORTH YORKSHIRE COUNTY COUNCIL
(TEMPORARY PROHIBITION OF PEDESTRIANS)
PUBLIC FOOTPATH 35.59/5/1, SOUTH MILFORD
ORDER 2020 NO 271
Road Traffic Regulation Act 1984 – Section 14(1) (as amended)

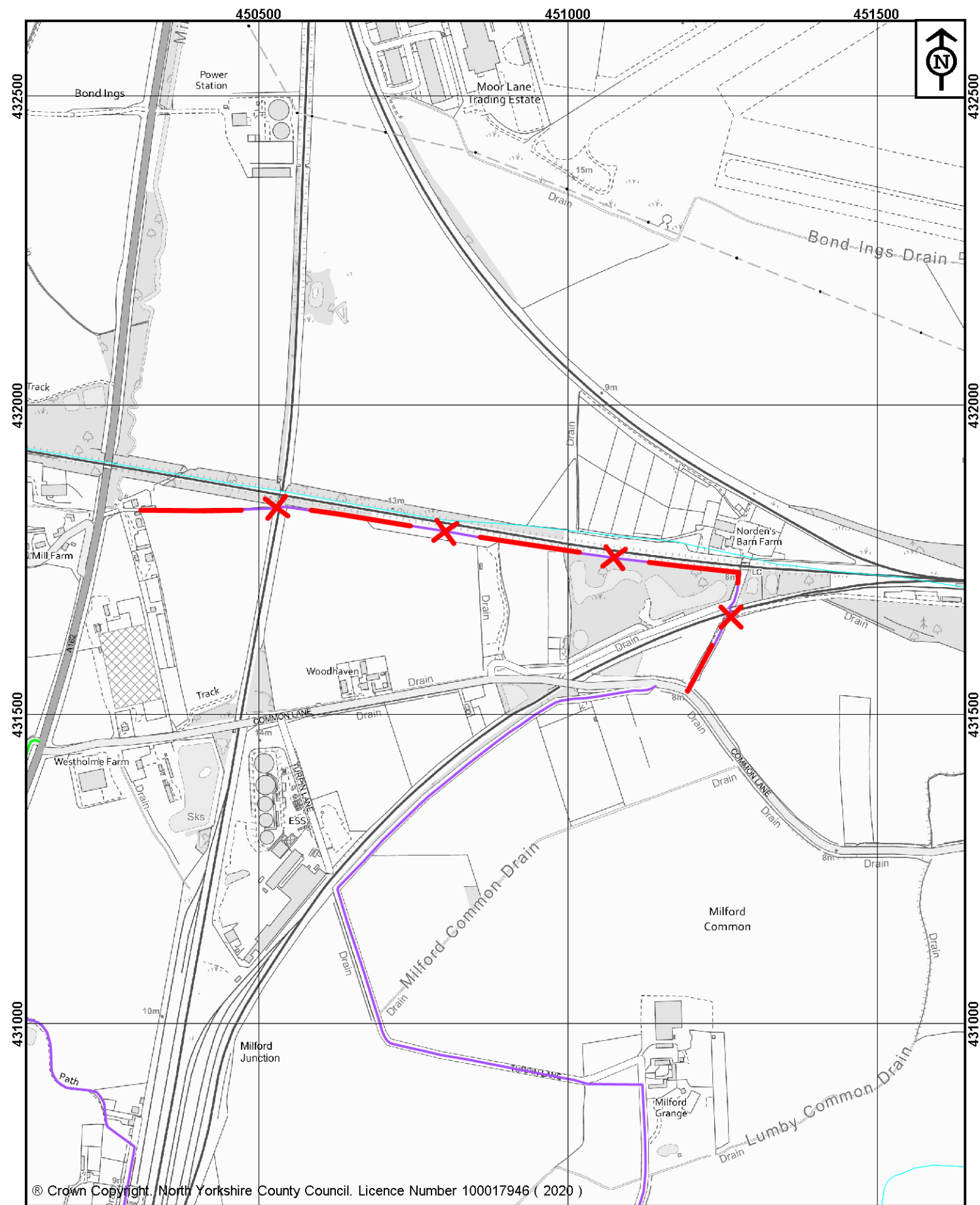
NOTICE is hereby given that the above Order, the effect of which is to prohibit any public access along Public Footpath 35.59/5/1, South Milford, Selby, between grid reference SE5030 3182 and SE5119 3153 (to ensure public safety pending closure of dangerous rail crossing) has been continued in force for a further twelve months until 2nd September 2023 under Section 15(3) of the above Act with the approval of the Secretary of State for Transport.

The further continuation of the closure will be put into effect by notices and signs. An alternative route will be signed on site.

All enquiries to: LiabilityNegotiationsLNEEM@networkrail.co.uk

Further details can be viewed at: <https://www.northyorks.gov.uk/rights-way-public-notice>

Dated: 1st September 2022



**North Yorkshire
County Council**

Public Rights of Way
Waste and Countryside Services
County Hall
Northallerton
DL7 8AH

Key:

Closed route

Public Footpath

Public Bridleway

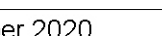
Restricted Byway

Byway Open to All Traffic

Map drawn on 2 September 2020

Drawn by SCM

Scale 1:8000



North Yorkshire County Council

Temporary closure of
Footpath 35.59/5/1 in
South Milford

File Ref No. 72/35/59/5/1