

# **Delivering Sustainable Energy in North Yorkshire Recommended Planning Guidance Figures**

Figure 5.1 – Landscape Typologies

Figure 5.2 – Landscape Sensitivity to Wind Energy Development

Figure 5.3 – Landscape Sensitivity to Development of Biomass Installations

Figure 5.4 – Landscape Sensitivity of Potential Sites for Development of  
Hydro Schemes

Figure 6.1 – Landscape Designations in North Yorkshire County

Figure 6.2 – Landscape Sensitivity to Wind Energy Development in relation  
to Landscape Designations

Figure 6.3 – Landscape Sensitivity to Development of Biomass Installations  
in Relation to Landscape Designations

Figure 6.4 – Areas of difference in judgement of sensitivity to wind  
development when compared to the Landscape Sensitivity Study in  
the AEAT (2004) report.

**Figure 5.1**

Study Area -  
North Yorkshire County



Note: For further detail on each typology, please consult the thumbnail maps in Appendix 4  
Source of typology data: Countryside Agency's "National Countryside Character Report", July 2001

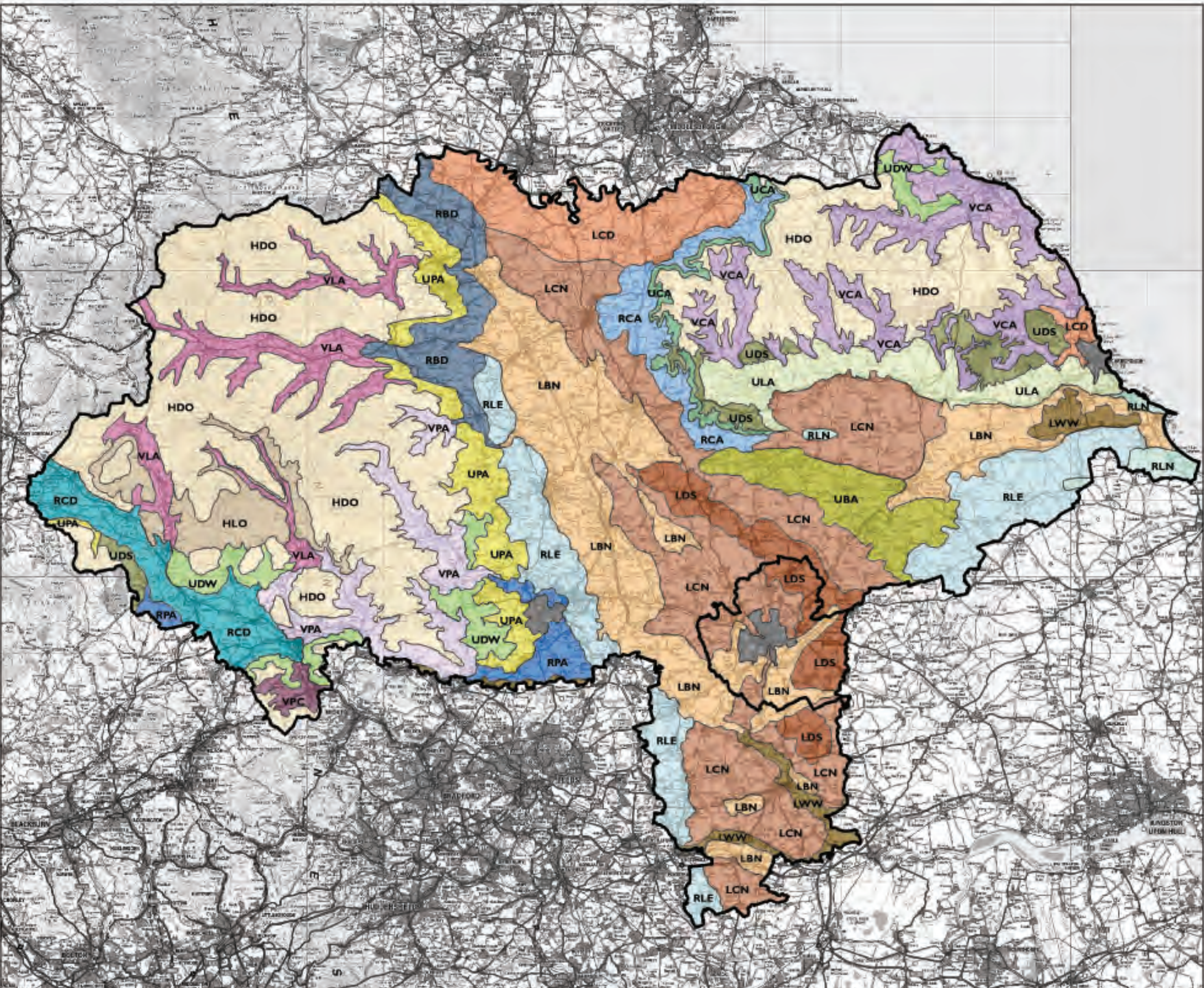


Figure 5.2

Landscape Sensitivity to Wind Energy Development

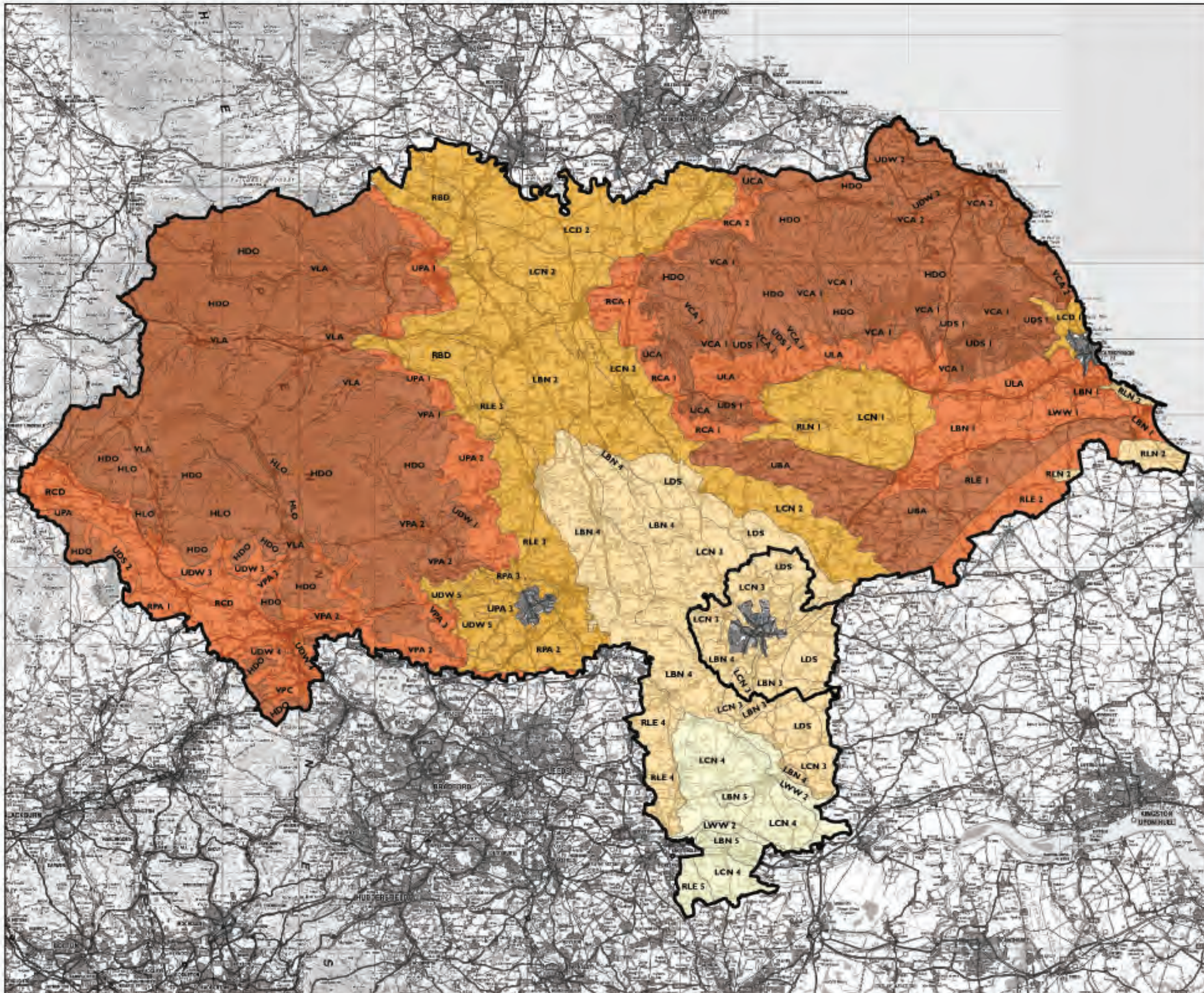
- County Boundary
- Sub Typology Boundary

Sensitivity

- High
- Medium - High
- Medium
- Medium - Low
- Low

This map provides broad guidance on the relative landscape sensitivity of different areas of North Yorkshire. It cannot be used to indicate whether a specific site is suitable or not. Further information can be found in the landscape sensitivity tables in Appendix 4.

0 5 10 15 20 25 km

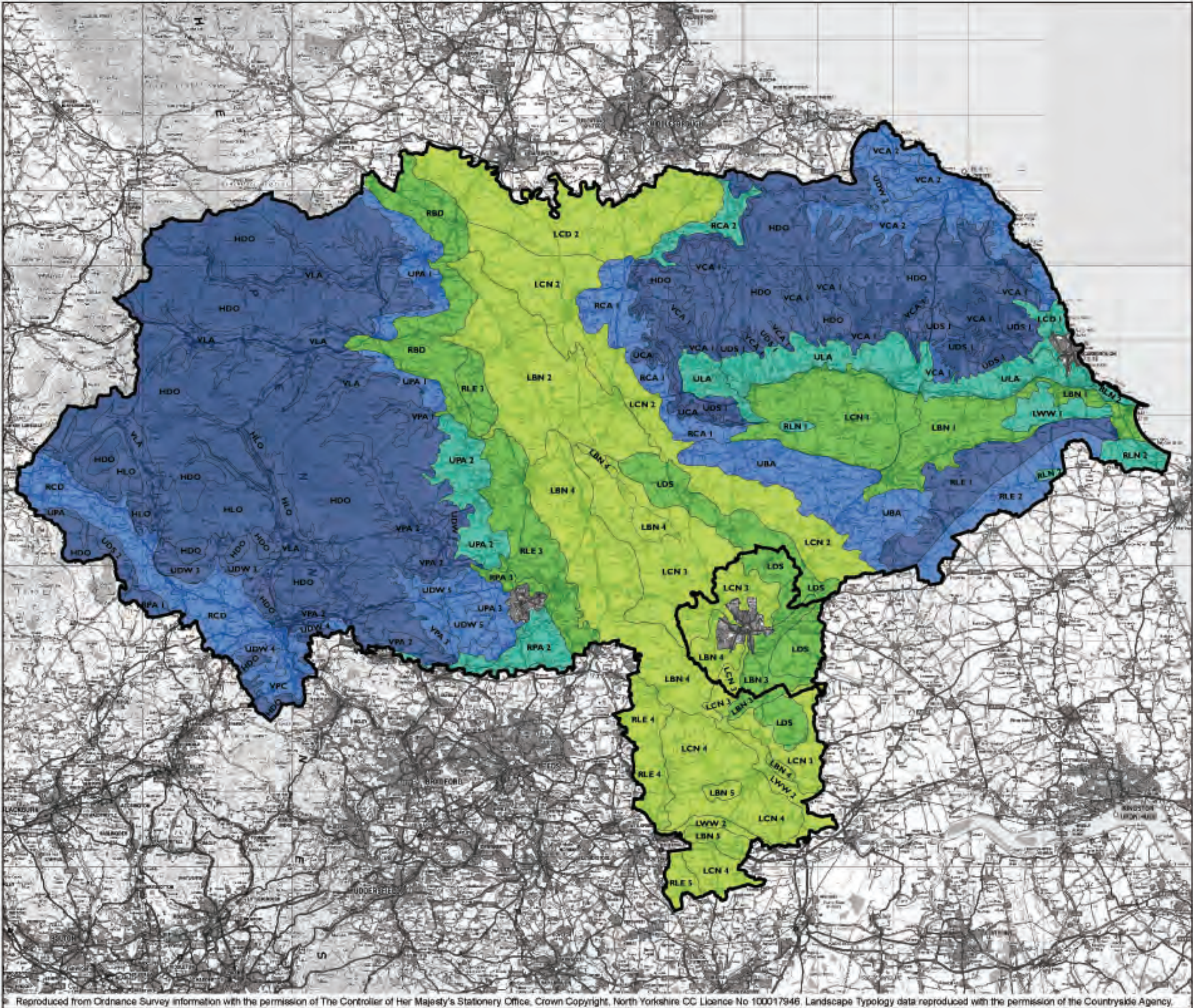


Reproduced from Ordnance Survey information with the permission of The Controller of Her Majesty's Stationery Office, Crown Copyright, North Yorkshire CC Licence No 100017946. Landscape Typology data reproduced with the permission of the Countryside Agency.



**Figure 5.3**

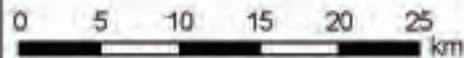
Landscape Sensitivity to  
Development of Biomass  
Installations



- County Boundary
- Sub Typology Boundary

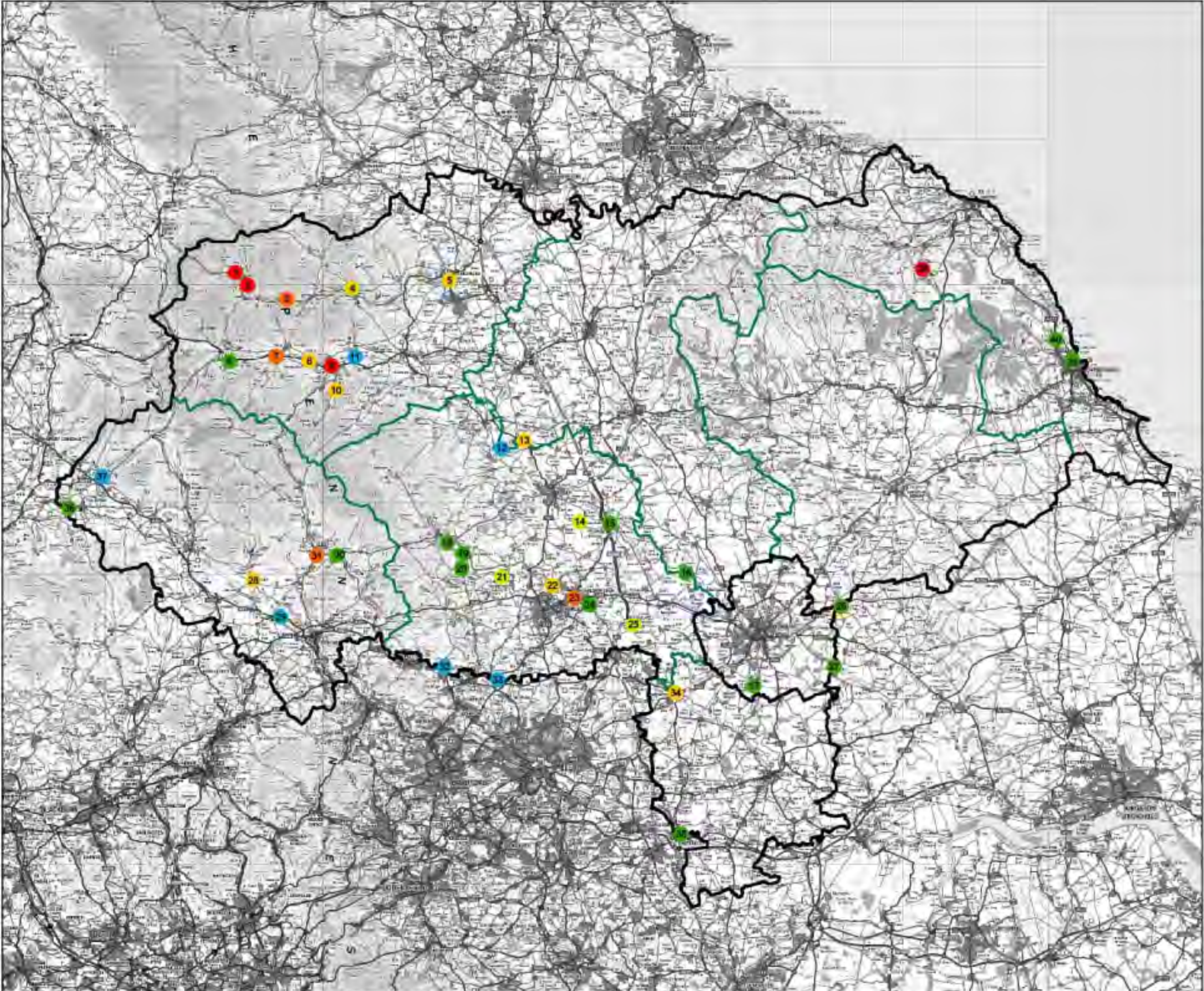
- Sensitivity**
- High
  - Medium - High
  - Medium
  - Medium - Low
  - Low

This map provides broad guidance on the relative landscape sensitivity of different areas of North Yorkshire. It cannot be used to indicate whether a specific site is suitable or not. Further information can be found in the landscape sensitivity tables in Appendix 4.



**Figure 5.4**

Landscape Sensitivity of Potential Sites for Development of Hydro Schemes



- County Boundary
- District Boundary

- Sensitivity**
- High
  - Medium-High
  - Medium
  - Medium-Low
  - Low
  - Undetermined

0 5 10 15 20 25 km

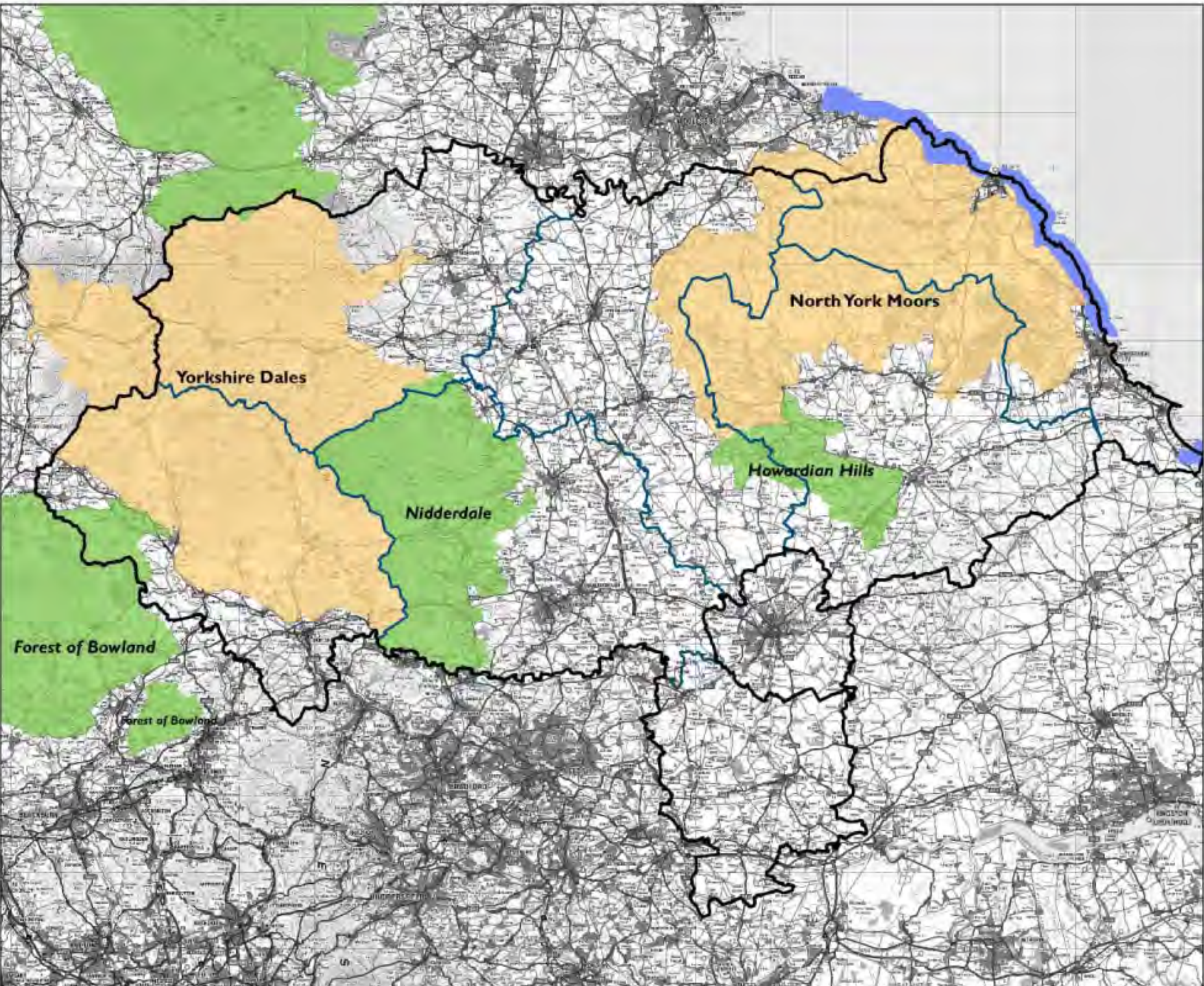


**Figure 6.1**

Landscape Designations in North Yorkshire County

-  County Boundary
-  District Boundary
-  AONB
-  Heritage Coast
-  National Park

0 5 10 15 20 25 km












Reproduced from Ordnance Survey information with the permission of The Controller of Her Majesty's Stationery Office, Crown Copyright, North Yorkshire CC Licence No 100017946. Landscape Typology data reproduced with the permission of the Countryside Agency



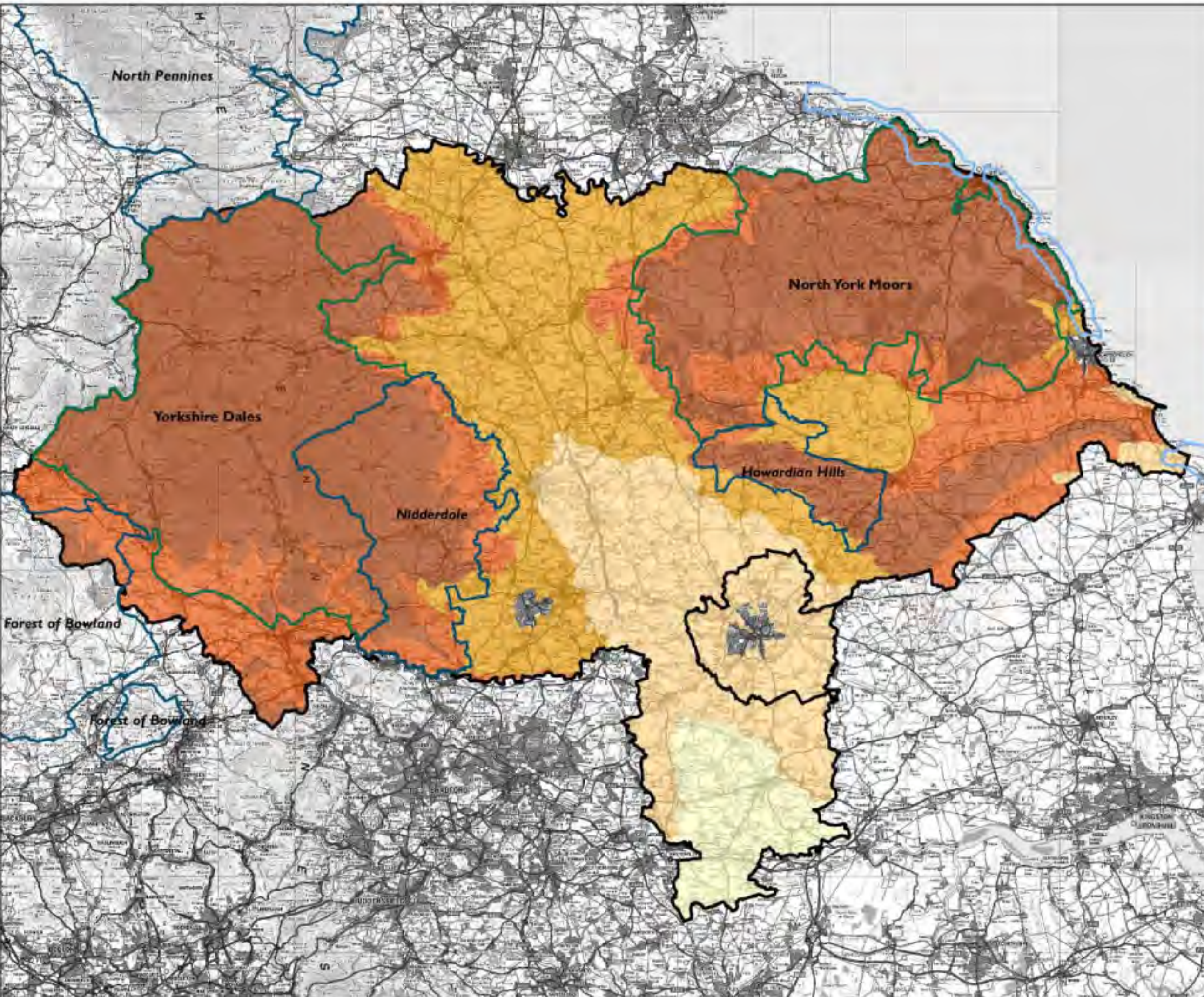
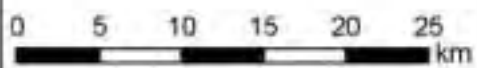
**Figure 6.2**

Landscape Sensitivity to Wind Energy Development - In relation to Landscape Designations

-  County Boundary
-  National Park
-  AONB
-  Heritage Coast

- Sensitivity**
-  High
  -  Medium - High
  -  Medium
  -  Medium - Low
  -  Low

This map provides broad guidance on the relative landscape sensitivity of different areas of North Yorkshire. It cannot be used to indicate whether a specific site is suitable or not. Further information can be found in the landscape sensitivity tables in Appendix 4.

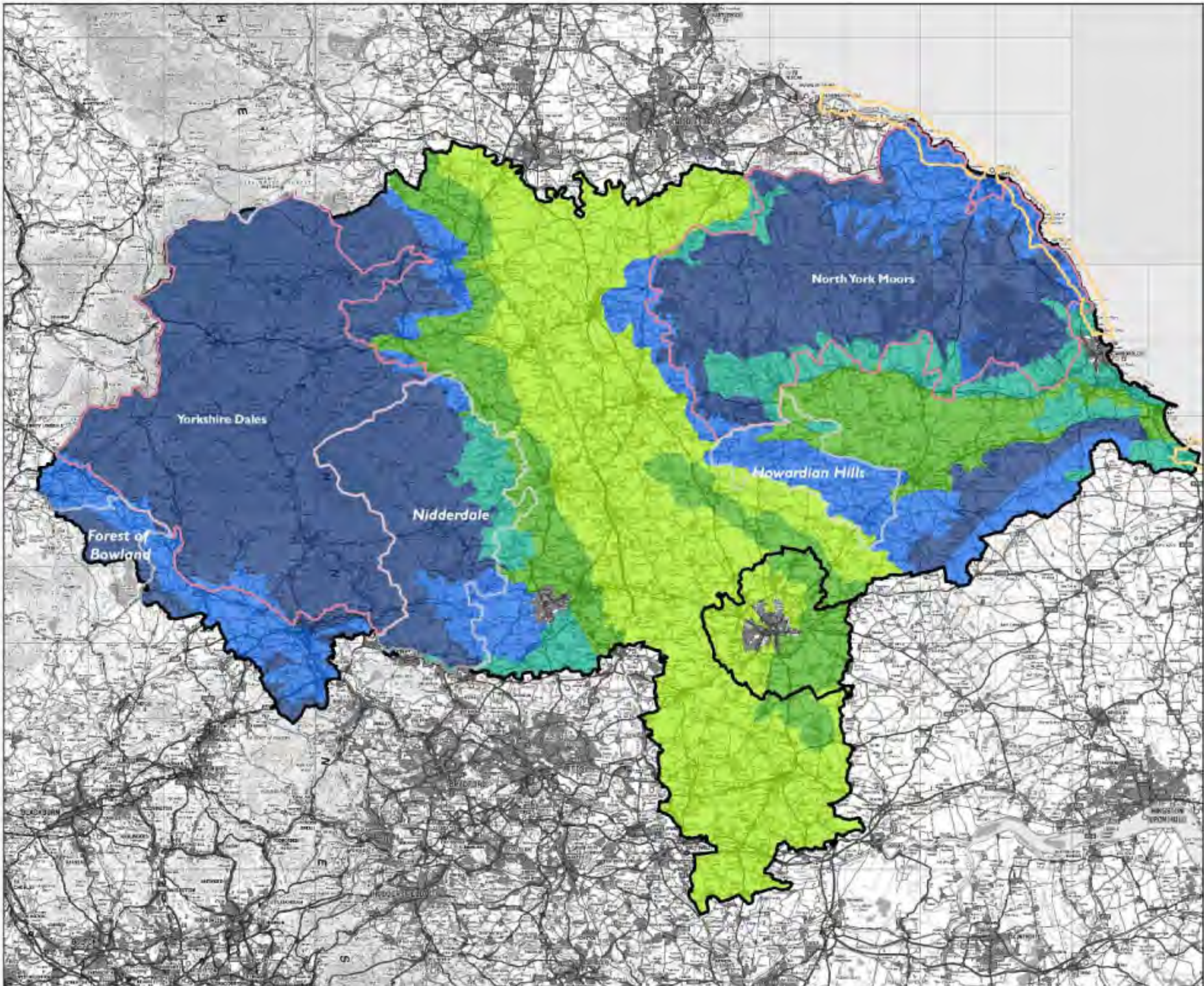






Reproduced from Ordnance Survey information with the permission of The Controller of Her Majesty's Stationery Office, Crown Copyright, north Yorkshire CC Licence No 100017946. Landscape Typology data reproduced with the permission of the Countryside Agency








**Figure 6.3**

Landscape Sensitivity to Development of Biomass Installations - In Relation to Landscape Designations



-  County Boundary
-  National Park
-  AONB
-  Heritage Coast

- Sensitivity**
-  High
  -  Medium - High
  -  Medium
  -  Medium - Low
  -  Low

This map provides broad guidance on the relative landscape sensitivity of different areas of North Yorkshire. It cannot be used to indicate whether a specific site is suitable or not. Further information can be found in the landscape sensitivity tables in Appendix 4.

0 5 10 15 20 25 km






Reproduced from Ordnance Survey information with the permission of The Controller of Her Majesty's Stationery Office, Crown Copyright, North Yorkshire CC Licence No 100017946. Landscape Typology data reproduced with the permission of the Countryside Agency





**Figure 6.4**

Areas of difference in judgement of sensitivity to wind development when compared to the landscape sensitivity study in the AEAT (2004) report

-  County Boundary
-  Area of Difference
- Sensitivity (AEAT Report)**
  -  High
  -  Medium
  -  Low

0 3 6 12 18 24 km

Note: the numbered areas represent Countryside Character Areas while the colours show the sensitivity assigned to them in the AEAT study.

