

Surface Water Flood Vulnerability

- High Vulnerability
- Medium vulnerability
- Low vulnerability

Development Allocations

- Employment
- Housing
- Mixed Use



www.jeremybenn.co.uk
t +44 (0)1925 437020
f +44 (0)1925 437029
e info@jbaconsulting.co.uk



The Brew House
Wilderspool Park
Greenall's Avenue
Warrington
WA4 6HL

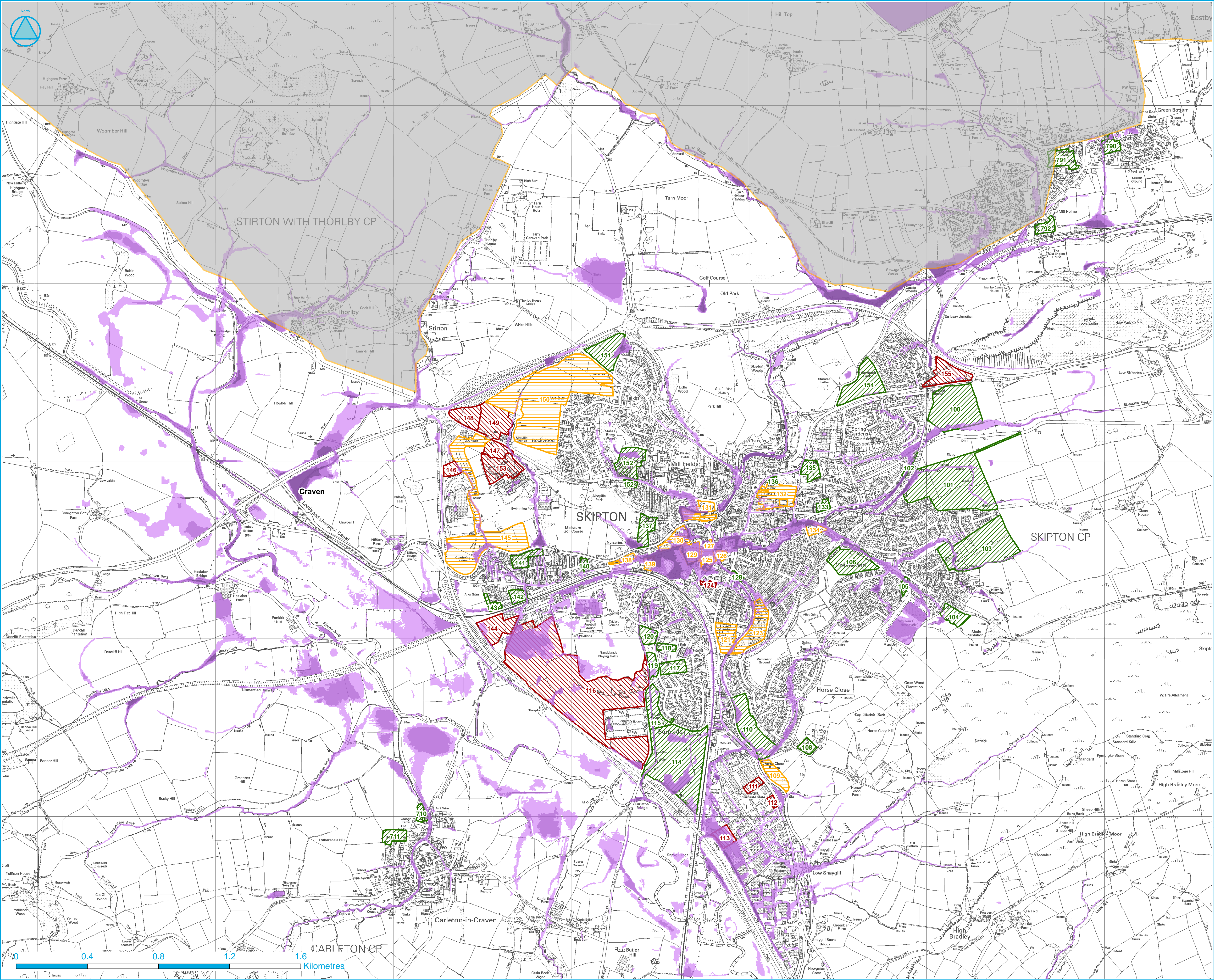
Other offices at Atherstone, Doncaster, Edinburgh, Newcastle upon Tyne, Northallerton, Skipton, Tadcaster & Wainwright

for
CRAVEN DISTRICT COUNCIL

NW Yorkshire Strategic Flood Risk Assessment
Update

Settle Refined Surface Water Flooding with Current
Risk

Drawn by: Peter Grace	Date: 04/03/2010	© Crown Copyright. All Rights Reserved. Licence Number 100019628 2010 (Harrogate BC)
Checked by: Mike Williamson	Date: 04/03/2010	© Crown Copyright. All Rights Reserved. Licence Number 100019628 2010 (Harrogate BC)
Approved by: Jonathan Cooper	Date: 04/03/2010	© Crown Copyright. All Rights Reserved. Licence Number 100019628 2010 (Harrogate BC)
File Name: N:\2009\Projects\2009\0209 - Harrogate Borough Council - North West Yorkshire SFRAs Update\Graphical Data\ArcView\Projects\2009\0209 - Harrogate Borough Council - North West Yorkshire SFRAs Update\Map F C1		
Drawing Number: Map F C1	Status: FINAL	Scale: 1:6,000



Surface Water Flood Vulnerability

- High Vulnerability
- Medium vulnerability
- Low vulnerability

Development Allocations

- Employment
- Housing
- Mixed Use



www.jeremybenn.co.uk
t +44 (0)1925 437020
f +44 (0)1925 437029
e info@jbaconsulting.co.uk

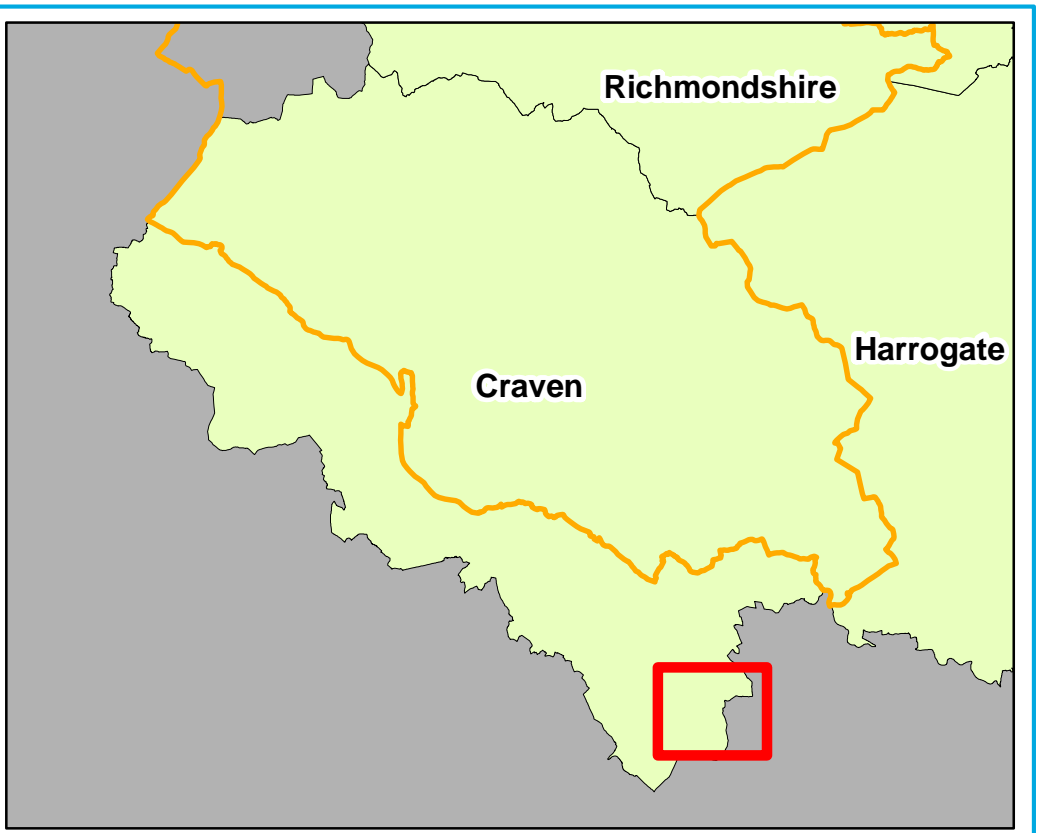
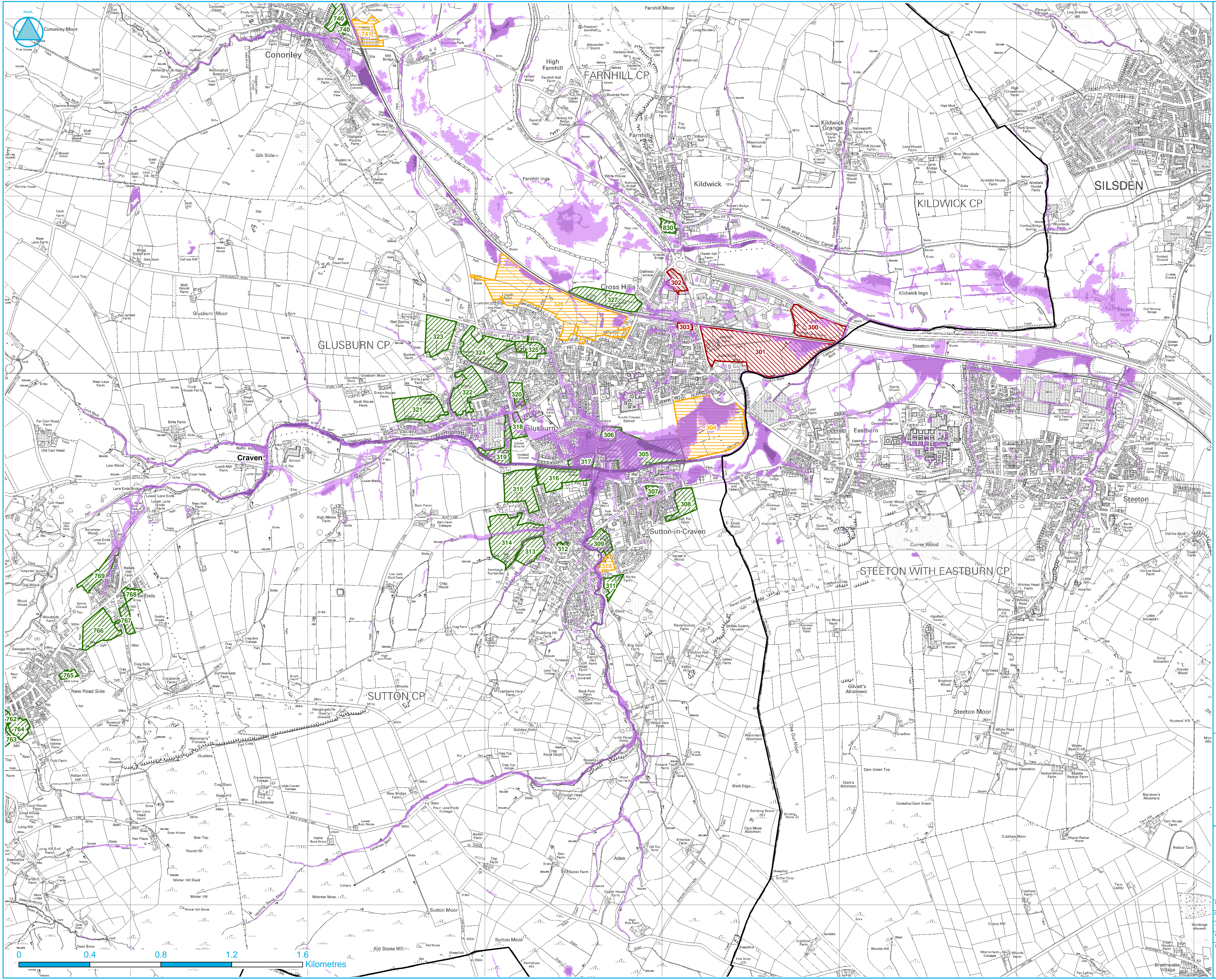


Other offices at Atherstone, Doncaster, Edinburgh, Newcastle upon Tyne, Northallerton, Skipton, Tadcaster & Wainthorpe


for
CRAVEN DISTRICT COUNCIL
NW Yorkshire Strategic Flood Risk Assessment
Update

Skipton Refined Surface Water Flooding with Current Risk

Drawn by: Peter Grace	Date: 04/03/2010	© Crown Copyright. All Rights Reserved. Licence Number 100019628 2010 (Harrogate BC)
Checked by: Mike Williamson	Date: 04/03/2010	© Crown Copyright. All Rights Reserved. Licence Number DCRA002 2010 (Craven DC)
Approved by: Jonathan Cooper	Date: 04/03/2010	© Crown Copyright. All Rights Reserved. Licence Number 100019642 2010 (Richmondshire DC)
File Name: N:\2009\Projects\2009\0209 - Harrogate Borough Council - North West Yorkshire SFRAs Update\Graphical Data\ArcView\Projects\DRIFT_MXD\Craven_CDA_Current_Map_v1.mxd		
Drawing Number: Map F C2	Status: FINAL	Scale: 1:10,000



- ### Surface Water Flood Vulnerability
- High Vulnerability
 - Medium vulnerability
 - Low vulnerability
- ### Development Allocations
- Employment
 - Housing
 - Mixed Use



Other offices at Atherstone, Doncaster, Edinburgh, Newcastle upon Tyne, Northallerton, Skipton, Tadcaster & Wainwright

for

CRAVEN DISTRICT COUNCIL

NW Yorkshire Strategic Flood Risk Assessment Update

Glusburn & Sutton-in-Craven Refined Surface Water Flooding with Current Risk

Drawn by: Peter Grace	Date: 04/03/2010	© Crown Copyright. All Rights Reserved. Licence Number 100019628 2010 (Harrogate BC)
Checked by: Mike Williamson	Date: 04/03/2010	© Crown Copyright. All Rights Reserved. Licence Number 100019628 2010 (Craven DC)
Approved by: Jonathan Cooper	Date: 04/03/2010	© Crown Copyright. All Rights Reserved. Licence Number 100019628 2010 (Craven DC)

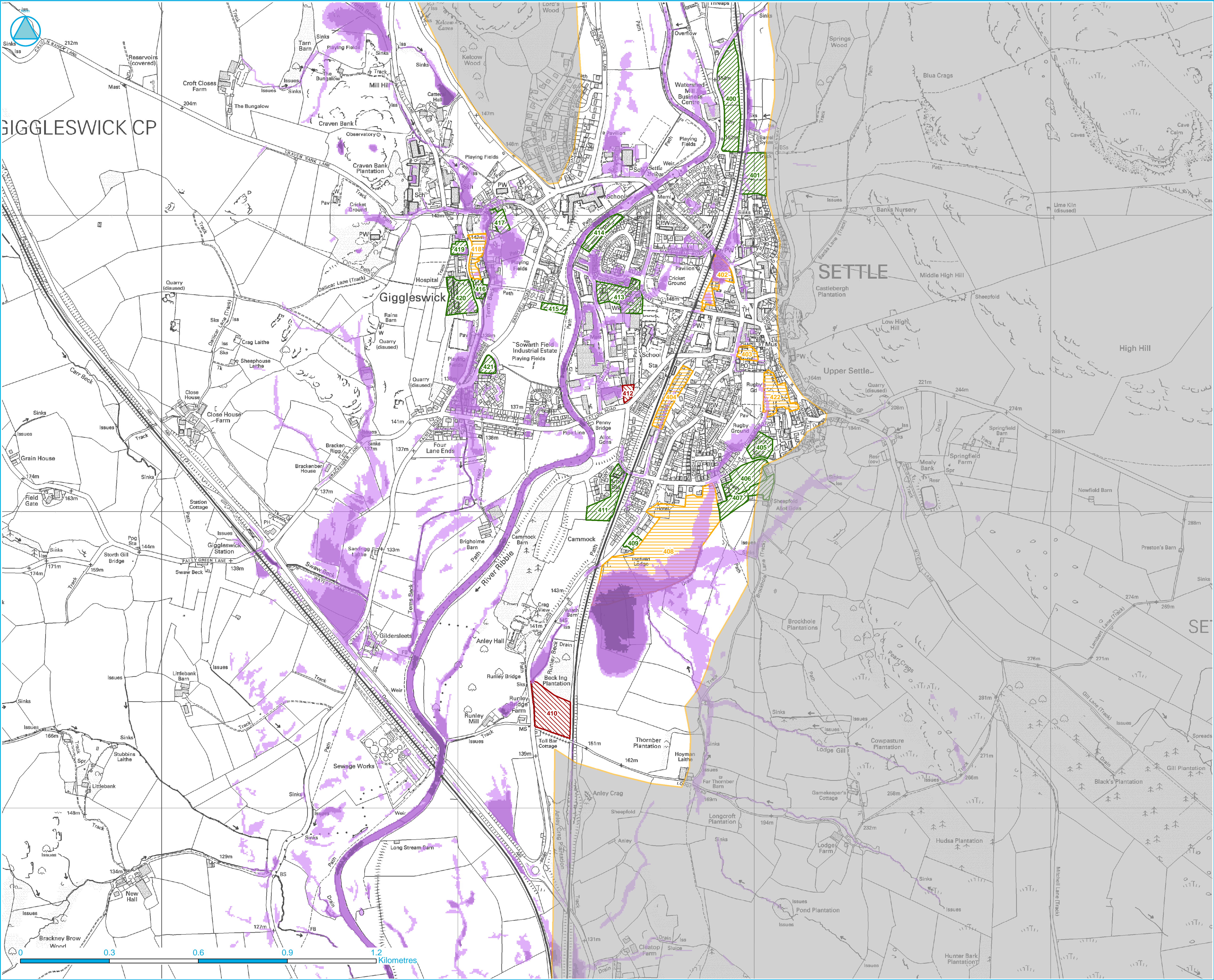
File Name: N:\2009\Projects\2009\0209 - Harrogate Borough Council - North West Yorkshire SFRAs Update\Graphical Data\ArcView\Projects\2009\0209 - Harrogate Borough Council - North West Yorkshire SFRAs Update\Map F C3

Drawing Number: Map F C3

Status: FINAL

Scale: 1:10,000

Original © A1



Surface Water Flood Vulnerability

- High vulnerability
- Medium vulnerability
- Low vulnerability

Development Allocations

- Employment
- Housing
- Mixed Use

Due to the high level nature of the National Areas Susceptible to Surface Water Flooding Maps developed by the EA, more detailed surface water maps were produced as shown on this map. The 2D modelling software JFLOW was used to route rainfall over an elevation model and is the same base tool used for the national Areas Susceptible to Surface Water Flooding map. However, certain inputs were changed to refine the resulting surface water flood outlines. (See Section 5.6 of the Volume 2 Report for more detail).



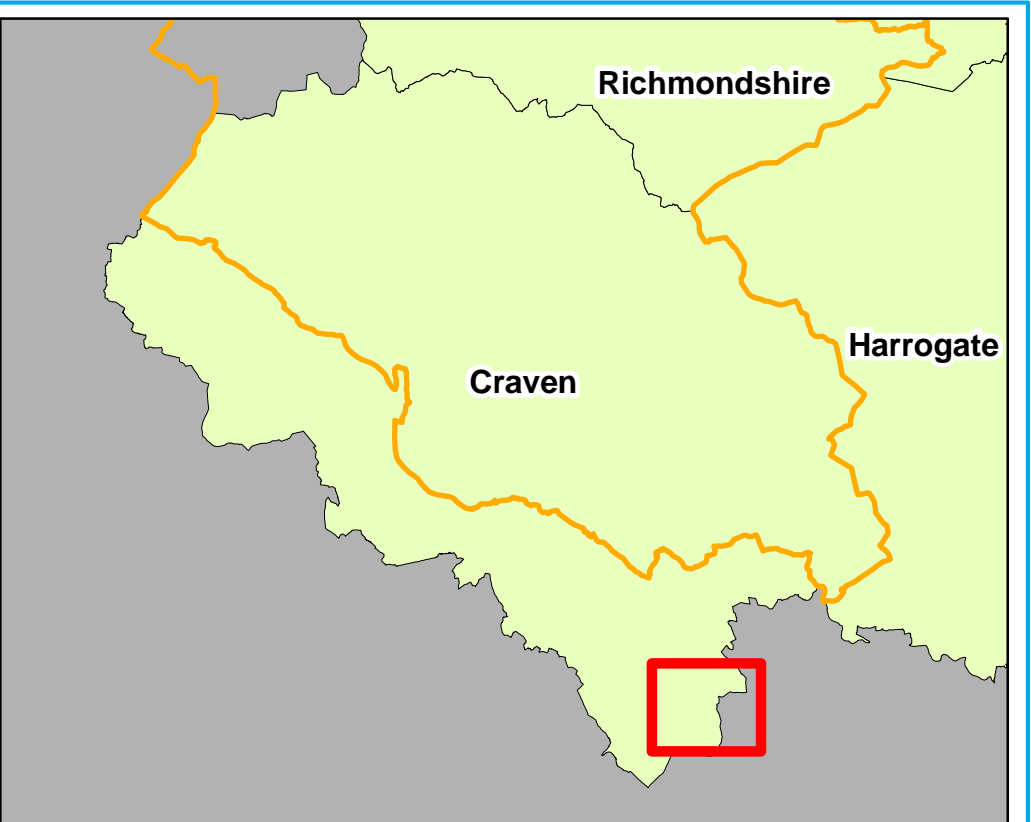
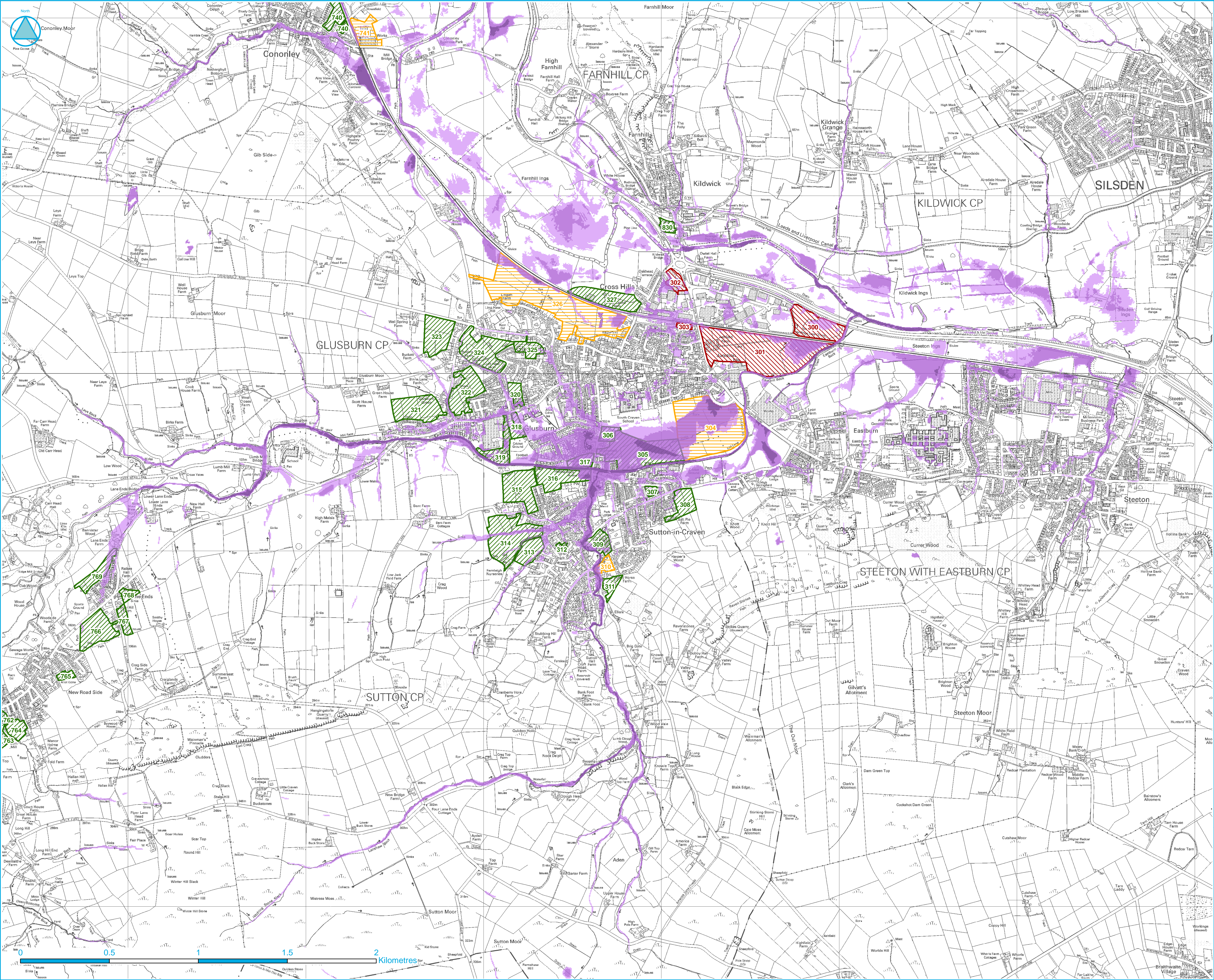
www.jeremybenn.co.uk
t +44 (0)1925 437020
f +44 (0)1925 437029
e info@jbaconsulting.co.uk



Other offices at Atherstone, Doncaster, Edinburgh, Newcastle upon Tyne, Northallerton, Skipton, Tadcaster & Wainwright

for
CRAVEN DISTRICT COUNCIL
NW Yorkshire Strategic Flood Risk Assessment
Update
Settle Refined Surface Water Flooding with Future Risk

Drawn by: Peter Grace	Date: 04/03/2010	© Crown Copyright. All Rights Reserved. Licence Number 100019628 2010 (Harrogate BC)
Checked by: Mike Williamson	Date: 04/03/2010	© Crown Copyright. All Rights Reserved. Licence Number 100019628 2010 (Harrogate BC)
Approved by: Jonathan Cooper	Date: 04/03/2010	© Crown Copyright. All Rights Reserved. Licence Number 100019628 2010 (Harrogate BC)
File Name: N:\2009\Projects\2009\0209 - Harrogate Borough Council - North West Yorkshire SFRa Update\Graphical Data\ArcView\Projects\DRIFT_MXD\Craven_CDA_Map_v1.mxd		
Drawing Number: Map F C4	Status: FINAL	Scale: 1:6,000



Surface Water Flood Vulnerability

- High vulnerability
- Medium vulnerability
- Low vulnerability

Development Allocations

- Employment
- Housing
- Mixed Use

Due to the high level nature of the National Areas Susceptible to Surface Water Flooding Maps developed by the EA, more detailed surface water maps were produced as shown on this map. The 2D modelling software JFLOW was used to route rainfall over an elevation model and is the same base tool used for the national Areas Susceptible to Surface Water Flooding map. However, certain inputs were changed to refine the resulting surface water flood outlines. (See Section 5.6 of the Volume 2 Report for more detail).



www.jeremybenn.co.uk
t +44 (0)1925 437020
f +44 (0)1925 437029
e info@jbaconsulting.co.uk



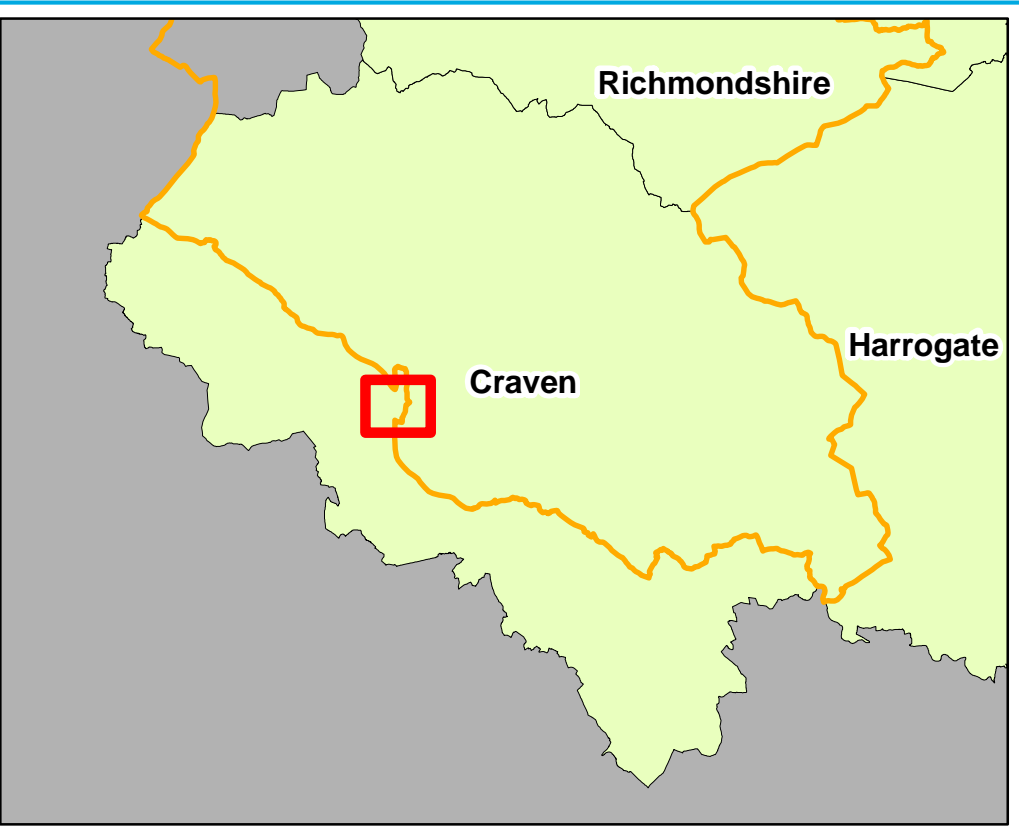
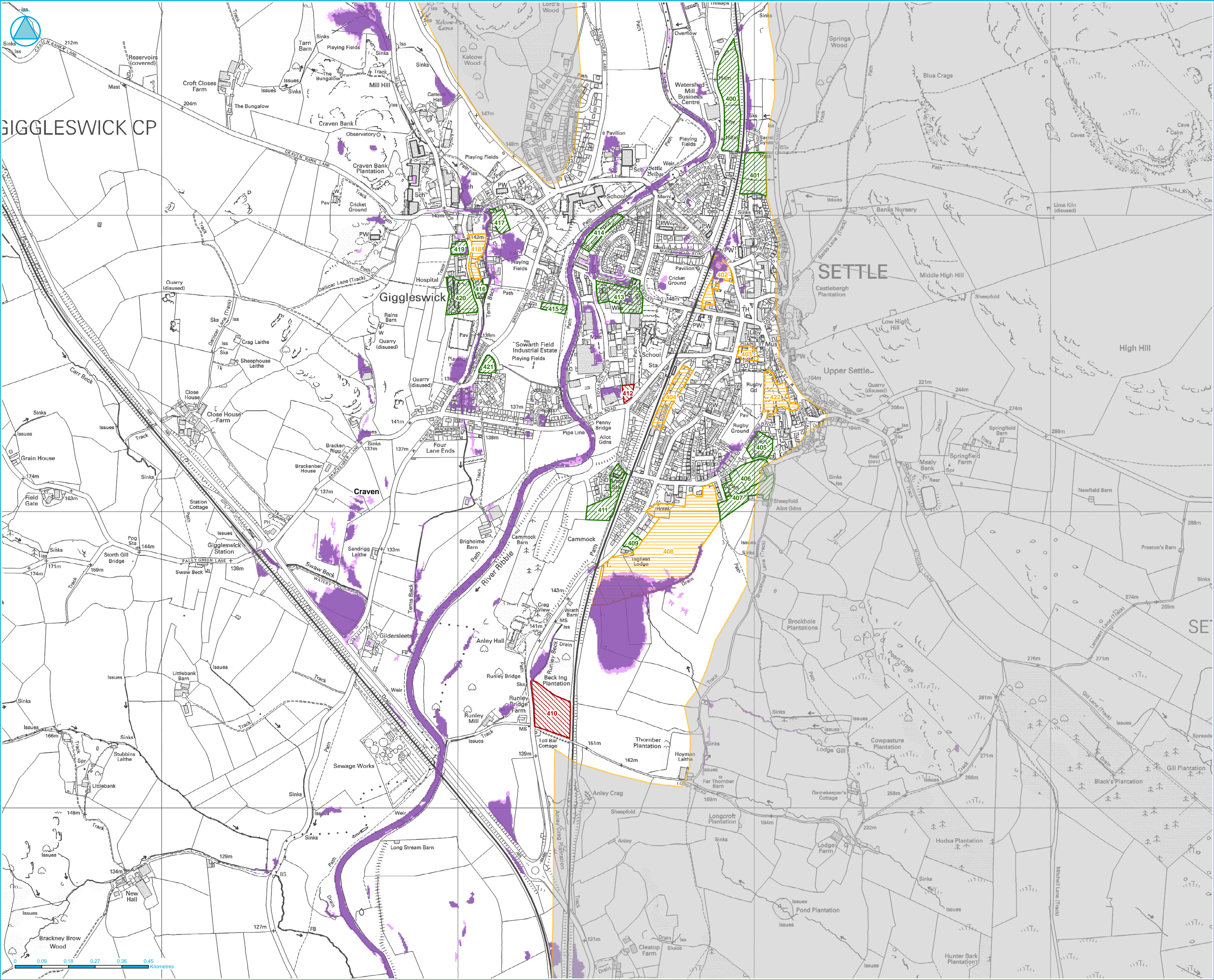
The Brew House
Wilderspool Park
Greenall's Avenue
Warrington
WA4 6HL

Other offices at Atherstone, Doncaster, Edinburgh, Newcastle upon Tyne, Northallerton, Skipton, Tadcaster & Wainwright

CRAVEN DISTRICT COUNCIL
NW Yorkshire Strategic Flood Risk Assessment
Update

Glusburn & Sutton-in-Craven Refined Surface Water Flooding with Future Risk

Drawn by: Peter Grace	Date: 04/03/2010	© Crown Copyright. All Rights Reserved. Licence Number 100019628 2010 (Harrogate BC)
Checked by: Mike Williamson	Date: 04/03/2010	© Crown Copyright. All Rights Reserved. Licence Number 100019628 2010 (Craven DC)
Approved by: Jonathan Cooper	Date: 04/03/2010	© Crown Copyright. All Rights Reserved. Licence Number 100019628 2010 (Craven DC)
File Name: N:\2009\Projects\2009\0209 - Harrogate Borough Council - North West Yorkshire SFRAs Update\Graphical Data\ArcView\Projects\2009\0209 - Harrogate Borough Council - North West Yorkshire SFRAs Update\Map_v1.mxd		
Drawing Number: Map F C6	Status: FINAL	Scale: 1:10,000



Surface Water Flood Vulnerability

- Current medium vulnerability
- Future medium vulnerability

Development Allocations

- Employment
- Housing
- Mixed Use

Due to the high level nature of the National Areas Susceptible to Surface Water Flooding Maps developed by the EA, more detailed surface water maps were produced as shown on this map. The 2D modelling software JFLOW was used to route rainfall over an elevation model and is the same base tool used for the national Areas Susceptible to Surface Water Flooding map. However, certain inputs were changed to refine the resulting surface water flood outlines. (See Section 5.6 of the Volume 2 Report for more detail).



www.jeremybenn.co.uk
t +44 (0)1925 437020
f +44 (0)1925 437029
e info@jbaconsulting.co.uk



The Brew House
Wilderspool Park
Greenall's Avenue
Warrington
WA4 6HL

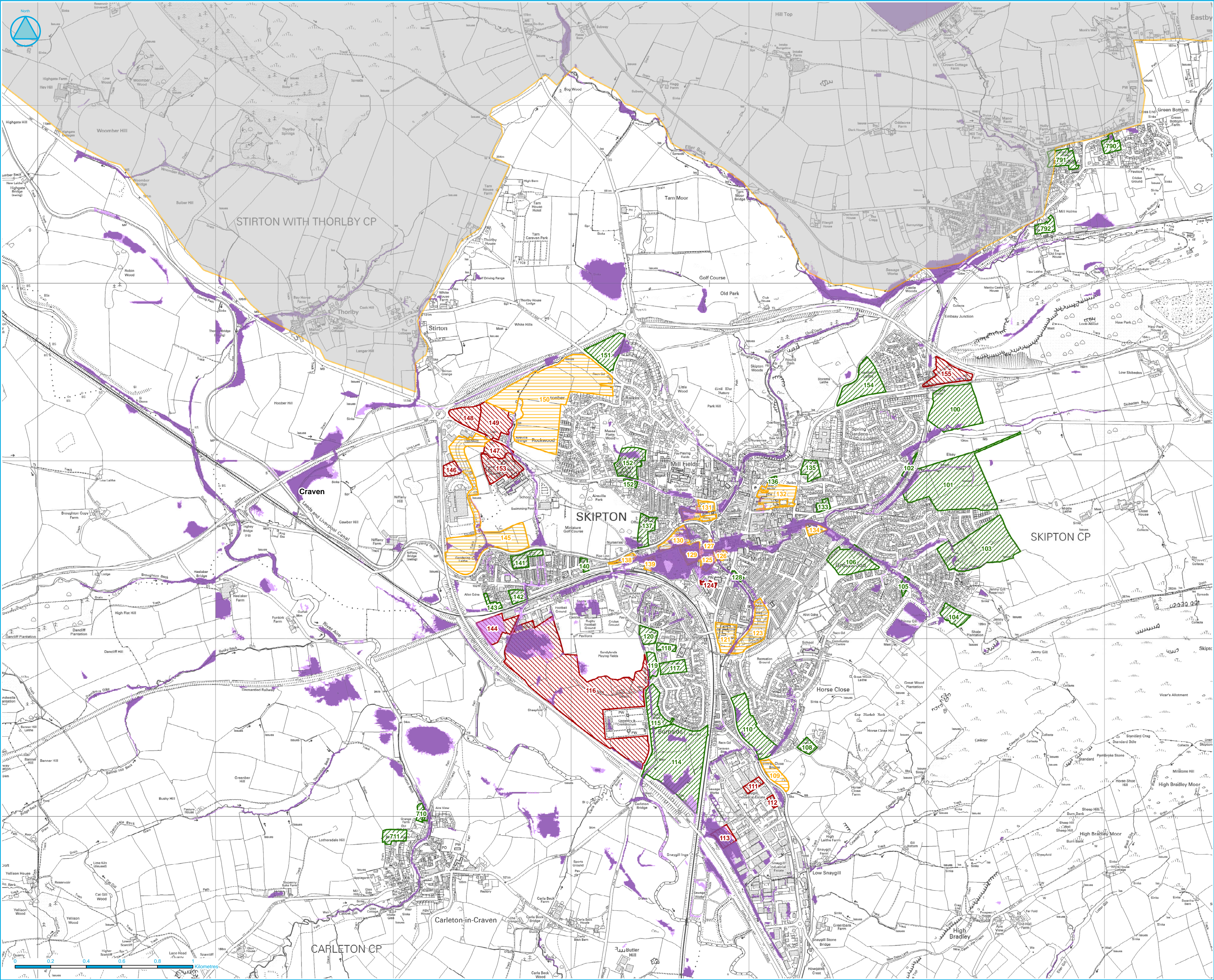
Other offices at Atherstone, Doncaster, Edinburgh, Newcastle upon Tyne, Northallerton, Skipton, Tadcaster & Wainwright

for

CRAVEN DISTRICT COUNCIL
NW Yorkshire Strategic Flood Risk Assessment
Update

Settle Refined Surface Water Flooding with the Difference
Between Medium Current & Future Risk

Drawn by: Peter Grace	Date: 05/03/2010	© Crown Copyright. All Rights Reserved. Licence Number 100019628 2010 (Harrogate BC)
Checked by: Mike Williamson	Date: 05/03/2010	© Crown Copyright. All Rights Reserved. Licence Number 100019628 2010 (Harrogate BC)
Approved by: Jonathan Cooper	Date: 05/03/2010	© Crown Copyright. All Rights Reserved. Licence Number 100019628 2010 (Harrogate BC)
File Name: N:\2009\Projects\2009\0209 - Harrogate Borough Council - North West Yorkshire SFRAs Update\Graphical Data\ArcView\Projects\DRIFT_MXD\Craven_CDA_Current-Future-Comparison_Medium_Map_v1.mxd		
Drawing Number: Map F C7	Status: FINAL	Scale: 1:6,000



Surface Water Flood Vulnerability

- Current medium vulnerability
- Future medium vulnerability

Development Allocations

- Employment
- Housing
- Mixed Use

Due to the high level nature of the National Areas Susceptible to Surface Water Flooding Maps developed by the EA, more detailed surface water maps were produced as shown on this map. The 2D modelling software JFLOW was used to route rainfall over an elevation model and is the same base tool used for the national Areas Susceptible to Surface Water Flooding map. However, certain inputs were changed to refine the resulting surface water flood outlines. (See Section 5.6 of the Volume 2 Report for more detail).



www.jeremybenn.co.uk
t +44 (0)1925 437020
f +44 (0)1925 437029
e info@jbaconsulting.co.uk



The Brew House
Wilderspool Park
Greenall's Avenue
Warrington
WA4 6HL

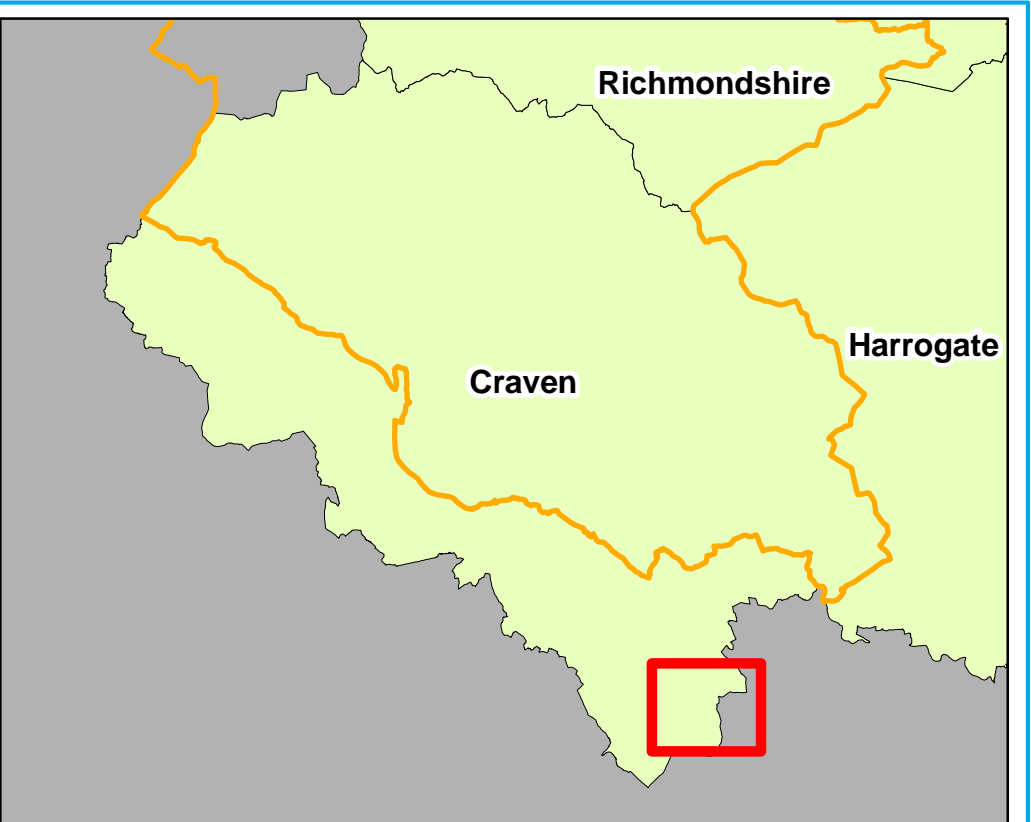
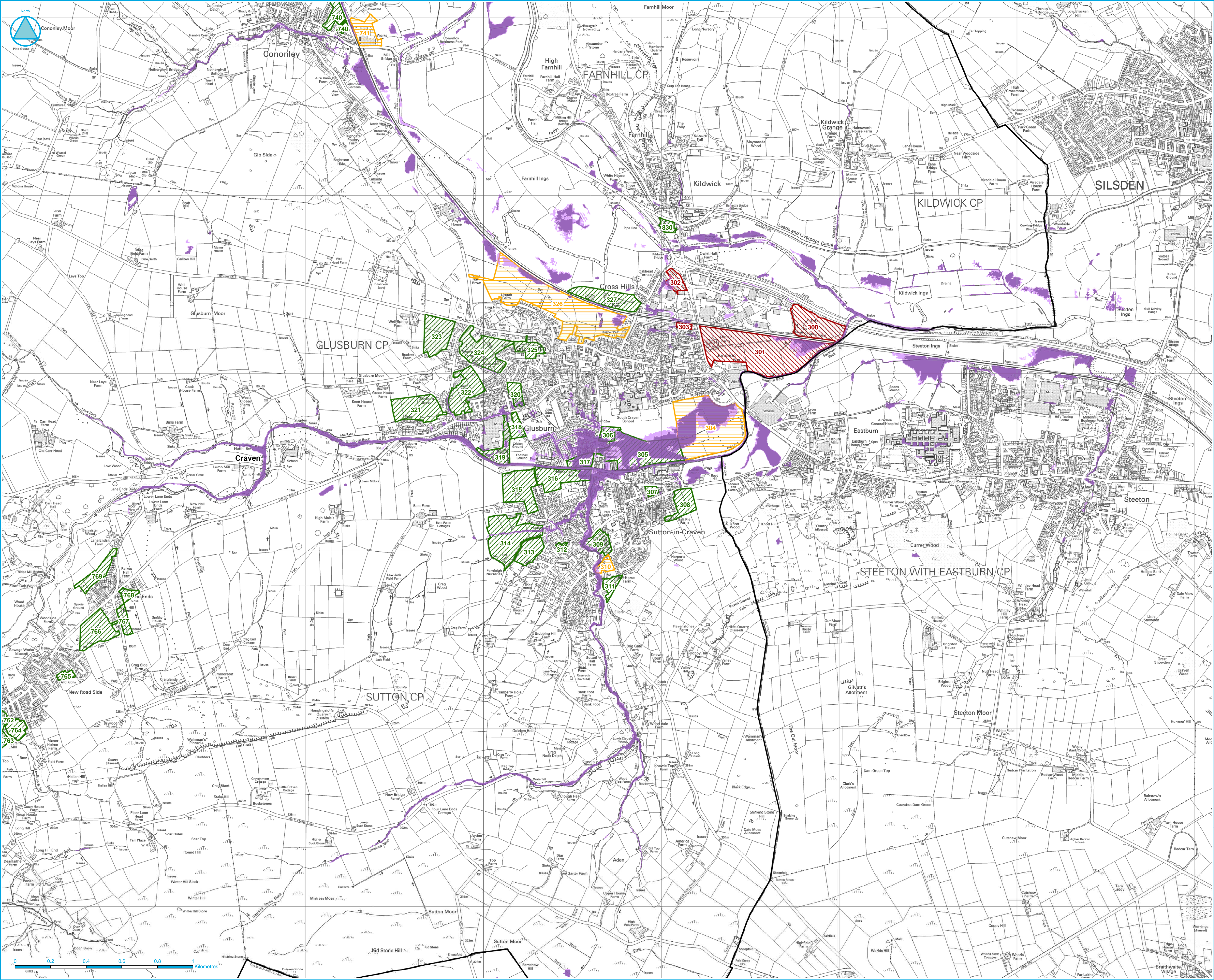
Other offices at Atherstone, Doncaster, Edinburgh, Newcastle upon Tyne, Northallerton, Skipton, Tadcaster & Wallingford

for CRAWEN DISTRICT COUNCIL

NW Yorkshire Strategic Flood Risk Assessment Update

SkiptonRefined Surface Water Flooding with the Difference Between Medium Current & Future Risk

Drawn by: Peter Grace	Date: 05/03/2010	© Crown Copyright. All Rights Reserved. Licence Number 100019628 2010 (Harrogate BC)
Checked by: Mike Williamson	Date: 05/03/2010	© Crown Copyright. All Rights Reserved. Licence Number 100019628 2010 (Harrogate BC)
Approved by: Jonathan Cooper	Date: 05/03/2010	© Crown Copyright. All Rights Reserved. Licence Number 100019628 2010 (Harrogate BC)
File Name: N:\2009\Projects\2009\0209 - Harrogate Borough Council - North West Yorkshire SFRPA Update\Graphical Data\ArcView\Projects\DRIFT_MXD\Craven_CDA_CurrentFutureComparison_Medium_Map_v1.mxd		
Drawing Number: Map F C8	Status: FINAL	Scale: 1:10,000




Surface Water Flood Vulnerability

- Current medium vulnerability
- Future medium vulnerability


Development Allocations

- Employment
- Housing
- Mixed Use

Due to the high level nature of the National Areas Susceptible to Surface Water Flooding Maps developed by the EA, more detailed surface water maps were produced as shown on this map. The 2D modelling software JFLOW was used to route rainfall over an elevation model and is the same base tool used for the national Areas Susceptible to Surface Water Flooding map. However, certain inputs were changed to refine the resulting surface water flood outlines. (See Section 5.6 of the Volume 2 Report for more detail).



www.jeremybenn.co.uk
t +44 (0)1925 437020
f +44 (0)1925 437029
e info@jbaconsulting.co.uk



The Brew House
Wilderspool Park
Greenall's Avenue
Warrington
WA4 6HL

Other offices at Atherstone, Doncaster, Edinburgh, Newcastle upon Tyne, Northallerton, Skipton, Tadcaster & Wainwright

for

CRAVEN DISTRICT COUNCIL

NW Yorkshire Strategic Flood Risk Assessment Update

Glusburn & Sutton-in-Craven Refined Surface Water Flooding with the Difference Between Medium Current & Future Risk

Drawn by: Peter Grace	Date: 05/03/2010	© Crown Copyright. All Rights Reserved. Licence Number 100019628 2010 (Harrogate BC)
Checked by: Mike Williamson	Date: 05/03/2010	© Crown Copyright. All Rights Reserved. Licence Number 100019628 2010 (Craven DC)
Approved by: Jonathan Cooper	Date: 05/03/2010	© Crown Copyright. All Rights Reserved. Licence Number 100019628 2010 (Craven DC)
File Name: N:\2009\Projects\2009\0209 - Harrogate Borough Council - North West Yorkshire SFRAs Update\Graphical Data\ArcView\Projects\DRIFT_MXD\Craven_CDA_Current-Future-Comparison_Medium_Map_v1.mxd		
Drawing Number: Map F C9	Status: FINAL	Scale: 1:10,000

Original @ A1